

Product datasheet for **RC204646**

MS4A4A (NM_148975) Human Tagged ORF Clone

Product data:

Product Type:	Expression Plasmids
Product Name:	MS4A4A (NM_148975) Human Tagged ORF Clone
Tag:	Myc-DDK
Symbol:	MS4A4A
Synonyms:	4SPAN1; CD20-L1; CD20L1; HDCME31P; MS4A4; MS4A7
Mammalian Cell Selection:	Neomycin
Vector:	pCMV6-Entry (PS100001)
E. coli Selection:	Kanamycin (25 ug/mL)
ORF Nucleotide Sequence:	>RC204646 ORF sequence Red=Cloning site Blue=ORF Green=Tags(s)

TTTTGTAATACGACTCACTATAGGGCGGCCGGAATTCGTCGACTGGATCCGGTACCGAGGAGATCTGCC
GCC**CGATCGCC**

ATGCATCAGACCTACAGCAGACATTGCAGGCCTGAAGAAAGCACCTTTTCTGCTGCCATGACAACCATGC
AAGGAATGGAACAGGCCATGCCAGGGGCTGGCCCTGGTGTGCCCCAGCTGGGAAACATGGCTGTCATACA
TTCACATCTGTGGAAAGGATTGCAAGAGAAGTTCTTGAAGGGAGAACCCAAAGTCCTTGGGGTTGTGCAG
ATTCTGACTGCCCTGATGAGCCTTAGCATGGGAATAACAATGATGTGTATGGCATCTAATACTTATGGAA
GTAACCCTATTTCCGTGTATATCGGGTACACAATTTGGGGGTGAGTAATGTTTATTATTTAGGATCCTT
GTCAATTGCAGCAGGAATTAGAACTACAAAAGGCCTGGTCCGAGGTAGTCTAGGAATGAATATCACCAGC
TCTGTAAGTGGCTGCATCAGGGATCTTAATCAACACATTTAGCTTGGCGTTTTATTCAATCCATCACCCCTT
ACTGTAAGTACTATGGCAACTCAATAATTGTCATGGGACTATGTCCATCTAATGGGTCTGGATGGCAT
GGTGCTCCTCTTAAGTGTGCTGGAATTCTGCATTGCTGTGTCCCTCTCTGCCTTTGGATGTAAGGTGCTC
TGTTGTACCCCTGGTGGGGTTGTGTTAATTCTGCCATCACATTCTCACATGGCAGAAACAGCATCTCCCA
CACCACCTAATGAGGTT

ACGCGTACGCGGCCGCTCGAGCAGAAACTCATCTCAGAAGAGGATCTGGCAGCAAATGATATCCTGGATT
ACAAGGATGACGACGATAAGGTTTAA



[View online »](#)

Protein Sequence: >RC204646 protein sequence
 Red=Cloning site Green=Tags(s)

MHQYTSRHRPEESTFSAAMTTMQGMEQAMPGAGPGVPQLGNMAVIHSHLWKGLQEFLKGPVKLVGVVQ
 ILTALMSLSMGIITMCMASNTYGSNPISVYIGYTIWGSVMFIIISGSLSIAAGIRTTKGLVRGSLGMNITS
 SVLAASGILINTFSLAFYSFHPYCNYYGNSNCHGTMSILMGLDGMVLLLSVLEFCIAVSLSAFGCKVL
 CCTPGGVVLLILPSHSHMAETASPTPLNEV

TRTRPLEQKLISEEDLAANDILDYKDDDDKV

Chromatograms: https://cdn.origene.com/chromatograms/mk6069_f05.zip

Restriction Sites: SgfI-MluI

Cloning Scheme:

Cloning sites used for ORF Shuttling:



* The last codon before the Stop codon of the ORF

ACCN: NM_148975

ORF Size: 717 bp

OTI Disclaimer: The molecular sequence of this clone aligns with the gene accession number as a point of reference only. However, individual transcript sequences of the same gene can differ through naturally occurring variations (e.g. polymorphisms), each with its own valid existence. This clone is substantially in agreement with the reference, but a complete review of all prevailing variants is recommended prior to use. [More info](#)

OTI Annotation: This clone was engineered to express the complete ORF with an expression tag. Expression varies depending on the nature of the gene.

Components: The ORF clone is ion-exchange column purified and shipped in a 2D barcoded Matrix tube containing 10ug of transfection-ready, dried plasmid DNA (reconstitute with 100 ul of water).

Reconstitution Method:

1. Centrifuge at 5,000xg for 5min.
2. Carefully open the tube and add 100ul of sterile water to dissolve the DNA.
3. Close the tube and incubate for 10 minutes at room temperature.
4. Briefly vortex the tube and then do a quick spin (less than 5000xg) to concentrate the liquid at the bottom.
5. Store the suspended plasmid at -20°C. The DNA is stable for at least one year from date of shipping when stored at -20°C.

RefSeq: [NM_148975.2](#)

RefSeq Size: 1668 bp

RefSeq ORF: 720 bp

Locus ID: 51338

UniProt ID: [Q96JQ5](#)

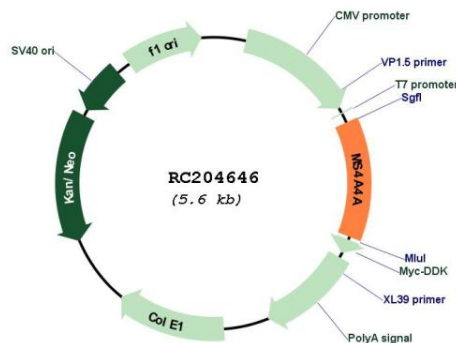
Cytogenetics: 11q12.2

Protein Families: Druggable Genome, Transmembrane

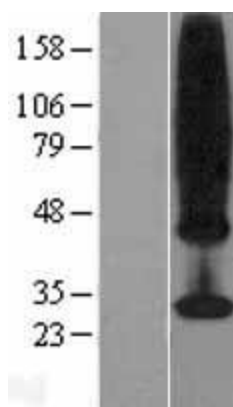
MW: 25.4 kDa

Gene Summary: This gene encodes a member of the membrane-spanning 4A gene family. Members of this nascent protein family are characterized by common structural features, similar intron/exon splice boundaries, and display unique expression patterns in hematopoietic cells and nonlymphoid tissues. Alternatively spliced transcript variants encoding different isoforms have been found for this gene. [provided by RefSeq, Aug 2011]

Product images:



Circular map for RC204646



Western blot validation of overexpression lysate (Cat# [LY403453]) using anti-DDK antibody (Cat# [TA50011-100]). Left: Cell lysates from untransfected HEK293T cells; Right: Cell lysates from HEK293T cells transfected with RC204646 using transfection reagent MegaTran 2.0 (Cat# [TT210002]).