

Product datasheet for **RC204642**

SERPINA10 (NM_016186) Human Tagged ORF Clone

Product data:

Product Type:	Expression Plasmids
Product Name:	SERPINA10 (NM_016186) Human Tagged ORF Clone
Tag:	Myc-DDK
Symbol:	SERPINA10
Synonyms:	PZI; ZPI
Mammalian Cell Selection:	Neomycin
Vector:	pCMV6-Entry (PS100001)
E. coli Selection:	Kanamycin (25 ug/mL)



[View online »](#)

ORF Nucleotide Sequence:

>RC204642 representing NM_016186
 Red=Cloning site Blue=ORF Green=Tags(s)

TTTTGTAATACGACTCACTATAGGGCGGCCGGAATTCGTCGACTGGATCCGGTACCGAGGAGATCTGCC
 GCC**CGCATCGCC**

ATGAAGGTGGTGCCAAGTCTCCTGCTCTCCGTCCTCTGGCACAGGTGTGGCTGGTACCCGGCTTGCCCC
 CCAGTCTCAGTCGCCAGAGACCCAGCCCTCAGAACCAGACCAGCAGGGTAGTGCAGGCTCCCAAGGA
 GGAAGAGGAAGATGAGCAGGAGGCCAGCGAGGAGAAGGCCAGTGAGGAAGAGAAAGCCTGGCTGATGGCC
 AGCAGGCAGCAGCTTGCCAAGGAGACTTCAAATTCGATTACAGCCTGCTGCGAAAGATCTCCATGAGGC
 ACGATGGCAACATGGTCTTCTCTCCATTTGGCATGTCTTGGCCATGACAGGCTTGATGTGGGGCCAC
 AGGGCCGACTGAAACCCAGATCAAGAGAGGGCTCCACTTGCAGGCCCTGAAGCCACCAAGCCGGGCTC
 CTGCCCTCCCTTTAAGGGACTCAGAGAGACCCTCTCCGCAACCTGGAAGTGGGCTCACACAGGGGA
 GTTTTGCCTTCATCCACAAGGATTTTGATGTCAAAGAGACTTTCTCAATTTATCCAAGAGGATTTTTGA
 TACAGAGTGCCTATGAATTTTCGCAATGCCTCACAGGCCAAAAGGCTCATGAATCATTACATTAAC
 AAAGAGACTCGGGGAAAATTCCCAAAGTGTGGATGAGATTAATCCTGAAACCAAAATTAATTTCTGTGG
 ATTACATCTTGTCAAAGGGAAATGGTTGACCCCATTTGACCCTGTCTTACCGAAGTGCACACTTTCCA
 CCTGGACAAGTACAAGACCATTAAGGTGCCATGATGTACGGTGCAGGCAAGTTTGCCTCCACCTTTGAC
 AAGAATTTTCTGTGTCATGTCTCAAATGCCCTACCAAGGAAATGCCACCATGTGGTGGTCTCATGG
 AGAAAAATGGGTGACCACCTCGCCCTTGAAGACTACCTGACCACAGACTTGGTGGAGACATGGCTCAGAAA
 CATGAAAACAGAAACATGGAAGTTTCTTCCGAAGTTCAAGCTAGATCAGAAGTATGAGATGCATGAG
 CTGCTTAGGCAGATGGGAATCAGAAGAATCTTCTACCCCTTGTGACCTTAGTGAACCTCAGCTACTG
 GAAGAAATCTCCAAGTATCCAGGGTTTTACAAAGAACAGTGATTGAAGTTGATGAAAGGGGCACTGAGGC
 AGTGGCAGGAATCTGTGACAAAATTAAGTCTTATTCCATGCCTCCTGTATCAAAGTGGACCGGCCATTT
 CATTTCATGATCTATGAAGAAACCTCTGGAATGCTTCTGTTTCTGGGCAGGGTGGTGAATCCGACTCTCC
 TA

ACGCGTACGCGGCCGCTCGAGCAGAAACTCATCTCAGAAGAGGATCTGGCAGCAAATGATATCCTGGATT
 ACAAGGATGACGACGATAAGGTTTAA

Protein Sequence:

>RC204642 representing NM_016186
 Red=Cloning site Green=Tags(s)

MKVVPSLLL SVLLAQVWLVPLAPSPQSPETPAPQNQTSRVVQAPKEEEEDEQEASEEKASEEEKAWLMA
 SRQLAKETS NFGFSLLRKISMRHDGNMVFSPFGMSLAMTGLMLGATGPTETQIKRGLHLQALKPTKPL
 LPSLFKGLRETL SRNLELGLTQGSFAFIHKDFDVKETFNLSKRYFDTECVPMNFRNASQAKRLMNHYIN
 KETRGKIPKLFDEINPETKLILVDYILFKGKWLTPFDVPFTEVDTFHLDKYKTIKVPMMYGAGKFASTFD
 KNFRCHVLKLPYQGNATMLVVLMEKMGDHLALEDYLTDDL VETWLRNMKTRNMEVFFPKFKLDQK YEMHE
 LLRQMGIRRI FSPFADLSEL SATGRNLQVSRVLQRTVIEVDERGTEAVAGILSEITAYSMPPIKVD RPF
 HFMIYEETSGMLLFLGRVNP TLL

TRTRPLEQKLISEEDLAANDILDYKDDDDKV

Chromatograms:

https://cdn.origene.com/chromatograms/mk8077_c08.zip

Restriction Sites:

Sgfl-MluI

Cloning Scheme:


ACCN: NM_016186

ORF Size: 1332 bp

OTI Disclaimer: The molecular sequence of this clone aligns with the gene accession number as a point of reference only. However, individual transcript sequences of the same gene can differ through naturally occurring variations (e.g. polymorphisms), each with its own valid existence. This clone is substantially in agreement with the reference, but a complete review of all prevailing variants is recommended prior to use. [More info](#)

OTI Annotation: This clone was engineered to express the complete ORF with an expression tag. Expression varies depending on the nature of the gene.

Components: The ORF clone is ion-exchange column purified and shipped in a 2D barcoded Matrix tube containing 10ug of transfection-ready, dried plasmid DNA (reconstitute with 100 ul of water).

Reconstitution Method:

1. Centrifuge at 5,000xg for 5min.
2. Carefully open the tube and add 100ul of sterile water to dissolve the DNA.
3. Close the tube and incubate for 10 minutes at room temperature.
4. Briefly vortex the tube and then do a quick spin (less than 5000xg) to concentrate the liquid at the bottom.
5. Store the suspended plasmid at -20°C. The DNA is stable for at least one year from date of shipping when stored at -20°C.

RefSeq: [NM_016186.2](#)

RefSeq Size: 2466 bp

RefSeq ORF: 1335 bp

Locus ID: 51156

UniProt ID: [Q9UK55](#)

Cytogenetics: 14q32.13

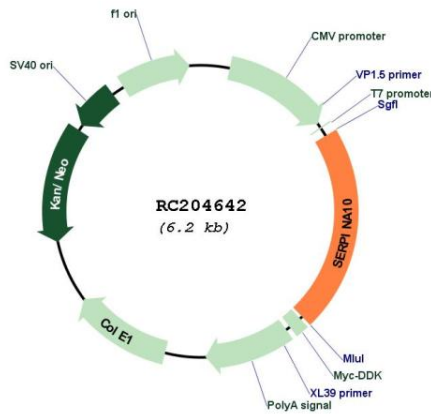
Domains: SERPIN

Protein Families: Druggable Genome, Secreted Protein

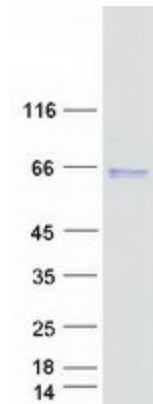
MW: 50.5 kDa

Gene Summary: The protein encoded by this gene belongs to the serpin family. It is predominantly expressed in the liver and secreted in plasma. It inhibits the activity of coagulation factors Xa and XIa in the presence of protein Z, calcium and phospholipid. Mutations in this gene are associated with venous thrombosis. Alternatively spliced transcript variants have been found for this gene.[provided by RefSeq, May 2010]

Product images:



Circular map for RC204642



Coomassie blue staining of purified SERPINA10 protein (Cat# [TP304642]). The protein was produced from HEK293T cells transfected with SERPINA10 cDNA clone (Cat# RC204642) using MegaTran 2.0 (Cat# [TT210002]).