

Product datasheet for **RC204641**

Cornulin (CRNN) (NM_016190) Human Tagged ORF Clone

Product data:

Product Type:	Expression Plasmids
Product Name:	Cornulin (CRNN) (NM_016190) Human Tagged ORF Clone
Tag:	Myc-DDK
Symbol:	CRNN
Synonyms:	C1orf10; DRC1; PDRC1; SEP53
Vector:	pCMV6-Entry (PS100001)
E. coli Selection:	Kanamycin (25 ug/mL)
Cell Selection:	Neomycin



[View online »](#)

ORF Nucleotide Sequence:

>RC204641 ORF sequence
 Red=Cloning site Blue=ORF Green=Tags(s)

TTTTGTAATACGACTCACTATAGGGCGGCCGGAATTCGTCGACTGGATCCGGTACCGAGGAGATCTGCC
 GCC**CGGATCGCC**

ATGCCTCAGTTACTGCAAAACATTAATGGGATCATCGAGGCCTTCAGGCGCTATGCAAGGACGGAGGGCA
 ACTGCACAGCGCTCACCCGAGGGGAGCTGAAAAGACTCTTGAGCAAGAGTTGCCGATGTGATTGTGAA
 ACCCCACGATCCAGCAACTGTGGATGAGGTCTGCGTCTGCTGGATGAAGACCACACAGGGACTGTGGAA
 TTCAAGGAATTCCTGGTCTTAGTGTTTAAAGTTGCCAGGCCTGTTTCAAGACTGAGCGAGAGTGCTG
 AGGGAGCTCGGCTCTCAAGAGTCTGGAAGCCTCCACTCTGGGGCTCGCAGGAGCTGGGCGAAGGACA
 GAGAAGTGGCACTGAAGTGGGAAGGGCGGGAAAGGGCAGCATTATGAGGGGAGCAGCCACAGACAGAGC
 CAGCAGGGTCCAGAGGGCAGAACAGGCCTGGGGTTCAGACCCAGGGTCAAGCCACTGGCTCTGCGTGGG
 TCAGCAGCTATGACAGGCAAGCTGAGTCCAGAGCCAGGAAAGAATAAGCCCGCAGATACAACCTCTCTGG
 GCAGACAGAGCAGACCCAGAAAGCTGGAGAAGGCAAGAGGAATCAGACAACAGAGATGAGCCAGAGAGA
 CAGCCACAGACCAGGGAACAGGACAGAGCCACCAGACAGGTGAGACTGTGACTGGATCTGGAACCTCAGA
 CCCAGGCAGGTGCCACCCAGACTGTGGAGCAGGACAGCAGCCACCAGACAGGAAGAACGCAAGCAGAC
 ACAGGAGGCCACCAATGACCAGAACAGAGGGACTGAGACCCACGGTCAAGGCAGGAGCCAGACCAGCCAG
 GCTGTGACAGGAGGACATGCTCAGATACAGGCAGGGACACACACCAGACACCCACCCAGACCGTGGAGC
 AGGACAGCAGCCACCAGACAGGAAGCACCAGCACCAGACACAGGAGTCCACCAATGGCCAGAACAGAGG
 GACTGAGATCCACGGTCAAGGCAGGAGCCAGACCAGCCAGGCTGTGACAGGAGGACACACTCAGATACAG
 GCAGGGTACACACCCGAGACTGTGGAGCAGGACAGAAGCCAACTGTAGCCACGGAGGGGCTAGAGAAC
 AGGGACAGACCCAGACGCAGCCAGGCAGTGGTCAAAGATGGATGCAAGTGAAGCAACCTGAGGCAGGAGA
 GACAGTACCGGGAGGACAGGCCAGACTGGGGCAAGCACTGAGCCAGGAAGGCAGGAGTGGAGCAGCACT
 CACCCAAGGCGCTGTGTGACAGAAGGGCAGGGAGACAGACAGCCACAGTGGTGGTGGGAATGGGTTG
 ATGACCACTCAAGGGAGACAGTATCCTCAGGCTGGACCAGGGCAACTTGCATACCAAGTGTTCCTCAGC
 ACAGGGCCAGGATGCAGCCAGTCAGAAGAGAAGCGAGGCATCACAGCTAGAGAGCTGTATTCTACTTG
 AGAAGCACCAAGCCA

ACGCGTACGCGGCCGCTCGAGCAGAAACTCATCTCAGAAGAGGATCTGGCAGCAAATGATATCCTGGATT
 ACAAGGATGACGACGATAAGGTTTAA

Protein Sequence:

>RC204641 protein sequence
 Red=Cloning site Green=Tags(s)

MPQLLQNINGIIEAFRRYARTEGNCTAL TRGELKRLLEQEFADVIKPHDPATVDEVLRLLDEDHTGTVE
 FKEFLVLFKVAQACFKTLESSEAGACGSQESGSLHSGASQELGEGQRSGTEVGRAGKQHYEGSSHRQS
 QQGSRGQNRPGVQTQGGATGSAWVSSYDRQAESQSQERISPIQLSGQTEQTQKAGEGKRNQTTEMRPER
 QPQTREQDRAHQTGETVTGSGTQTQAGATQTVEQDSSHQTGRTSKQTQEATNDQNRGTEIHTGQGRSQT
 AVTGGHAQIQAGTHTQTPTQTVEQDSSHQTGSTSTQTQESTNGQNRGTEIHTGQGRSQTSAVTTGGHTQIQ
 AGSHTEIVEQDRSQTVSHGGAREQGQTQTQPGSGQRWQVSNPEAGETVPGGQAQTGASTEPGRQEWSS
 HPRRCVTEGGDRQPTVVGEWVDDHSRETVILRLDQGNLHTSVSSAQGDAAQSEEKRGITARELYSYL
 RSTKP

TRTRPLEQKLISEEDLAANDILDYKDDDDKV

Chromatograms:

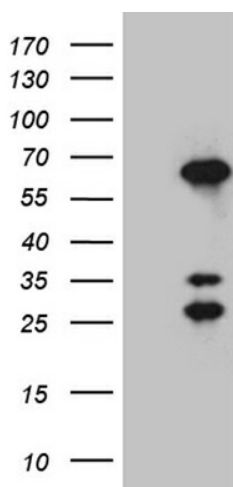
https://cdn.origene.com/chromatograms/mk6707_c04.zip

Restriction Sites:

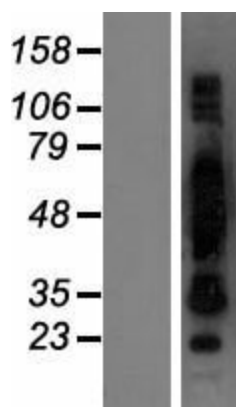
Sgfl-MluI

ACCN:	NM_016190
ORF Size:	1485 bp
OTI Disclaimer:	The molecular sequence of this clone aligns with the gene accession number as a point of reference only. However, individual transcript sequences of the same gene can differ through naturally occurring variations (e.g. polymorphisms), each with its own valid existence. This clone is substantially in agreement with the reference, but a complete review of all prevailing variants is recommended prior to use. More info
OTI Annotation:	This clone was engineered to express the complete ORF with an expression tag. Expression varies depending on the nature of the gene.
RefSeq:	NM_016190.3
RefSeq Size:	1913 bp
RefSeq ORF:	1488 bp
Locus ID:	49860
UniProt ID:	Q9UBG3
MW:	53.5 kDa
Gene Summary:	This gene encodes a member of the "fused gene" family of proteins, which contain N-terminus EF-hand domains and multiple tandem peptide repeats. The encoded protein contains two EF-hand Ca ²⁺ binding domains in its N-terminus and two glutamine- and threonine-rich 60 amino acid repeats in its C-terminus. This gene, also known as squamous epithelial heat shock protein 53, may play a role in the mucosal/epithelial immune response and epidermal differentiation. [provided by RefSeq, Jan 2009]

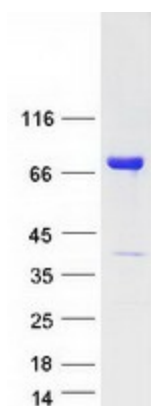
Product images:



HEK293T cells were transfected with the pCMV6-ENTRY control (Cat# [PS100001], Left lane) or pCMV6-ENTRY CRNN (Cat# RC204641, Right lane) cDNA for 48 hrs and lysed. Equivalent amounts of cell lysates (5 ug per lane) were separated by SDS-PAGE and immunoblotted with anti-CRNN (Cat# [TA811824])(1:2000). Positive lysates [LY414135] (100ug) and [LC414135] (20ug) can be purchased separately from OriGene.



Western blot validation of overexpression lysate (Cat# [LY414135]) using anti-DDK antibody (Cat# [TA50011-100]). Left: Cell lysates from untransfected HEK293T cells; Right: Cell lysates from HEK293T cells transfected with RC204641 using transfection reagent MegaTran 2.0 (Cat# [TT210002]).



Coomassie blue staining of purified CRNN protein (Cat# [TP304641]). The protein was produced from HEK293T cells transfected with CRNN cDNA clone (Cat# RC204641) using MegaTran 2.0 (Cat# [TT210002]).