

Product datasheet for **RC204640**

KLRC4 (NM_013431) Human Tagged ORF Clone

Product data:

Product Type: Expression Plasmids
Product Name: KLRC4 (NM_013431) Human Tagged ORF Clone
Tag: Myc-DDK
Symbol: KLRC4
Synonyms: NKG2-F; NKG2F
Mammalian Cell Selection: Neomycin
Vector: pCMV6-Entry (PS100001)
E. coli Selection: Kanamycin (25 ug/mL)
ORF Nucleotide Sequence: >RC204640 ORF sequence
Red=Cloning site Blue=ORF Green=Tags(s)

TTTTGTAATACGACTCACTATAGGGCGGCCGGAATTCGTCGACTGGATCCGGTACCGAGGAGATCTGCC
GCC**CGATCGCC**

ATGAATAAACAAAGAGGAACCTACTCAGAAGTGAGTCTGGCCAGGACCCAAAGAGGCAGCAAAGGAAAC
TTAAGGGCAATAAAATCTCCATTCAGGAACCAACAGGAAATATCCAAGTAGAATTAACCTTCAAAA
TGCTTCTCGGATCATCAAGGGAATGACAAGACATCACTGCAAAGTTTACTGCCACCTCCAGAGAAG
CTCACTGCTGAGGTCTAGGAATCATTTGCATTGCTGATGGCCACTGTGTTAAAAACAATAGTTCTTA
TTCCTTGTATTGGAGTACTGGAGCAGAACAATTTTCCCTGAATAGAAGAATGCAGAAAGCACGTCATTG
TGCCATTGTCTGAGGAGTGGATTACATATTCCAACAGTTGTTATTACATTGGTAAGGAAAGAAGAACT
TGGGAAGAAGAGTTTGCTGGCCTGTGCTCGAAGAAGCTCTGATCTGCTTCTA

ACGCGTACGCGGCCGCTCGAGCAGAACTCATCTCAGAAGAGGATCTGGCAGCAAATGATATCCTGGATT
ACAAGGATGACGACGATAAGGTTTAA

Protein Sequence: >RC204640 protein sequence
Red=Cloning site Green=Tags(s)
MNKQRGTYSEVSLAQDPKRQQRKLKGNKISISGKQEIFQVELNLQNASSDHQGNKTYHCKGLLPPEK
LTAEVLGIICIVLMATVLTIVLIPCIGVLEQNNFSLNRRMQKARHCGHCPEEWITYSNSCYIYGKERRT
WEERVCPVLRRTLICFL

TRTRPLEQKLISEEDLAANDILDYKDDDDKV

Chromatograms: https://cdn.origene.com/chromatograms/mk6068_e03.zip



[View online >](#)

Restriction Sites: SgfI-MluI

Cloning Scheme:



ACCN: NM_013431

ORF Size: 474 bp

OTI Disclaimer: The molecular sequence of this clone aligns with the gene accession number as a point of reference only. However, individual transcript sequences of the same gene can differ through naturally occurring variations (e.g. polymorphisms), each with its own valid existence. This clone is substantially in agreement with the reference, but a complete review of all prevailing variants is recommended prior to use. [More info](#)

OTI Annotation: This clone was engineered to express the complete ORF with an expression tag. Expression varies depending on the nature of the gene.

Components: The ORF clone is ion-exchange column purified and shipped in a 2D barcoded Matrix tube containing 10ug of transfection-ready, dried plasmid DNA (reconstitute with 100 ul of water).

Reconstitution Method:

1. Centrifuge at 5,000xg for 5min.
2. Carefully open the tube and add 100ul of sterile water to dissolve the DNA.
3. Close the tube and incubate for 10 minutes at room temperature.
4. Briefly vortex the tube and then do a quick spin (less than 5000xg) to concentrate the liquid at the bottom.
5. Store the suspended plasmid at -20°C. The DNA is stable for at least one year from date of shipping when stored at -20°C.

RefSeq: [NM_013431.2](#)

RefSeq Size: 928 bp

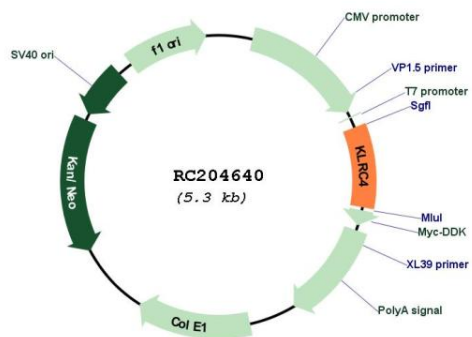
RefSeq ORF: 477 bp

Locus ID: 8302

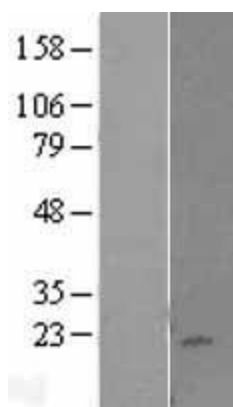
UniProt ID: [O43908](#)
Cytogenetics: 12p13.2
Protein Families: Transmembrane
Protein Pathways: Antigen processing and presentation
MW: 18.2 kDa
Gene Summary:

Natural killer (NK) cells are lymphocytes that can mediate lysis of certain tumor cells and virus-infected cells without previous activation. They can also regulate specific humoral and cell-mediated immunity. NK cells preferentially express several calcium-dependent (C-type) lectins, which have been implicated in the regulation of NK cell function. This gene is a member of the NKG2 group of genes that are expressed primarily in natural killer (NK) cells. These family members encode transmembrane proteins that are characterized by a type II membrane orientation (have an extracellular C-terminus) and the presence of a C-type lectin domain. This family member is located within the NK complex, a region that contains several C-type lectin genes preferentially expressed in NK cells. Read-through transcription exists between this gene and the downstream KLRK1 (killer cell lectin-like receptor subfamily K, member 1) family member. [provided by RefSeq, Dec 2010]

Product images:



Circular map for RC204640



Western blot validation of overexpression lysate (Cat# [LY402263]) using anti-DDK antibody (Cat# [TA50011-100]). Left: Cell lysates from untransfected HEK293T cells; Right: Cell lysates from HEK293T cells transfected with RC204640 using transfection reagent MegaTran 2.0 (Cat# [TT210002]).