

## Product datasheet for **RC204637**

### FCN1 (NM\_002003) Human Tagged ORF Clone

#### Product data:

Product Type:	Expression Plasmids
Product Name:	FCN1 (NM_002003) Human Tagged ORF Clone
Tag:	Myc-DDK
Symbol:	FCN1
Synonyms:	FCNM
Mammalian Cell Selection:	Neomycin
Vector:	pCMV6-Entry (PS100001)
E. coli Selection:	Kanamycin (25 ug/mL)
ORF Nucleotide Sequence:	>RC204637 ORF sequence Red=Cloning site Blue=ORF Green=Tags(s)

TTTTGTAATACGACTCACTATAGGGCGGCCGGAATTCGTCGACTGGATCCGGTACCGAGGAGATCTGCC  
GCC**CGATCGCC**

ATGGAGCTGAGTGGAGCCACCATGGCCCGGGTCTCGCTGTCCTGCTAGTCTTGTTCCTGCATATCAAGA  
ACCTGCCTGCCAGGCTGCGGACACATGTCCAGAGGTGAAGTGGTGGCCTGGAGGGCTCTGACAAAGCT  
CACCATTCTCCGAGGCTGCCCGGGCTGCCCGGGCCCCAGGGCCAAAGGGAGAGGCAGGTGTCATTGGA  
GAGAGAGGAGAACGCGGTCTCCCTGGAGCCCCTGGAAAGGCAGGACCAGTGGGGCCAAAGGAGACCGAG  
GAGAGAAGGGGATGCGTGGAGAGAAAGGAGACGCTGGGCAGTCTCAGTCGTGTGCGACAGGCCACGCAA  
CTGCAAGGACCTGCTAGACCGGGGTATTTCTGAGCGGCTGGCACCACCTACCTGCCGACTGCCGG  
CCCCTGACTGTGCTCTGTGACATGGACACGGACGGAGGGGCTGGACCGTTTTCCAGCGGAGGATGGATG  
GCTCTGTGGACTTCTATCGGGACTGGGCCGCATACAAGCAGGGCTTCGGCAGTCAGCTGGGGGAGTCTG  
GCTGGGAACGACAACATCCACGCCCTGACTGCCAGGGAAGCAGCGAGCTCCGTGTAGACCTGGTGGAC  
TTTGAGGGCAACCACAGTTTGCTAAGTACAAATCATTCAAGGTGGCTGACGAGGCAGAGAAGTACAAGC  
CACCAAAGACCAAGACAATGATGTGAGTCTTCGAATTGTCTGAGAAGTCCAGGGAGCCTGGTGGTAC  
GCCGACTGTATGCTTCAAACCTCAATGGTCTCTACCTCATGGGACCCCATGAGAGCTATGCCAATGGTA  
TCAACTGGAGTGGCGAAGGGGTACAAATATAGCTACAAGGTGTCAGAGATGAAGGTGCCGCCGCC

**ACGCGT**ACGCGGCCGCTCGAGCAGAAACTCATCTCAGAAGAGGATCTGGCAGCAAATGATATCCTGGATT  
ACAAGGATGACGACGATAAGGTTTAA



[View online »](#)

**Protein Sequence:** >RC204637 protein sequence  
Red=Cloning site Green=Tags(s)

MELSGATMARGLAVLLVLFHLHIKLNPAQAADTCPEVKVVGLEGSCLKLILRGCPGLPGAPGPKGEAGVIG  
 ERGERGLPGAPGKAGPVGPKGDRGEKGMERGEKGDAGQSQSCATGPRNCKDLLDRGYFLSGWHTIYLPDCR  
 PLTVLCDMDTDGGGWTFVQRRMDGSVDFYRDWAAYKQFGSQLGEFWLGNDNIHALTAQGSSELRVLDVD  
 FEGNHQFAKYKSFKVADEAEKYKLVLGAFVGGSSAGNSLTGHNNNFFSTKDQDNDVSSSNCAEFQGAWWY  
 ADCHASNLNGLYLMGPHESYANGINWSAAKGYKYSYKVMKVRPA

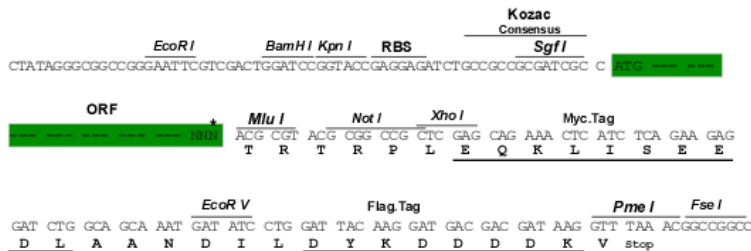
TRTRPLEQKLISEEDLAANDILDYKDDDDKV

**Chromatograms:** [https://cdn.origene.com/chromatograms/mk6069\\_a05.zip](https://cdn.origene.com/chromatograms/mk6069_a05.zip)

**Restriction Sites:** SgfI-MluI

**Cloning Scheme:**

Cloning sites used for ORF Shuttling:



\* The last codon before the Stop codon of the ORF

**ACCN:** NM\_002003

**ORF Size:** 978 bp

**OTI Disclaimer:** The molecular sequence of this clone aligns with the gene accession number as a point of reference only. However, individual transcript sequences of the same gene can differ through naturally occurring variations (e.g. polymorphisms), each with its own valid existence. This clone is substantially in agreement with the reference, but a complete review of all prevailing variants is recommended prior to use. [More info](#)

**OTI Annotation:** This clone was engineered to express the complete ORF with an expression tag. Expression varies depending on the nature of the gene.

**Components:** The ORF clone is ion-exchange column purified and shipped in a 2D barcoded Matrix tube containing 10ug of transfection-ready, dried plasmid DNA (reconstitute with 100 ul of water).

**Reconstitution Method:**

1. Centrifuge at 5,000xg for 5min.
2. Carefully open the tube and add 100ul of sterile water to dissolve the DNA.
3. Close the tube and incubate for 10 minutes at room temperature.
4. Briefly vortex the tube and then do a quick spin (less than 5000xg) to concentrate the liquid at the bottom.
5. Store the suspended plasmid at -20°C. The DNA is stable for at least one year from date of shipping when stored at -20°C.

**Note:** Plasmids are not sterile. For experiments where strict sterility is required, filtration with 0.22um filter is required.

**RefSeq:** [NM\\_002003.5](#)

**RefSeq Size:** 1313 bp

**RefSeq ORF:** 981 bp

**Locus ID:** 2219

**UniProt ID:** [O00602](#)

**Cytogenetics:** 9q34.3

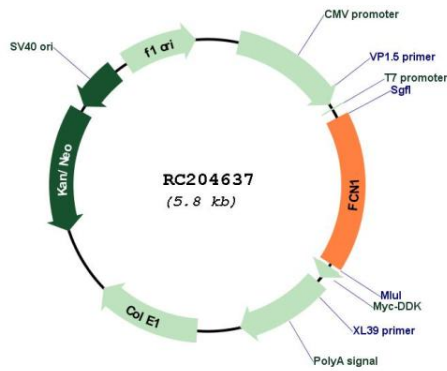
**Domains:** FBG, Collagen

**Protein Families:** Druggable Genome, Secreted Protein

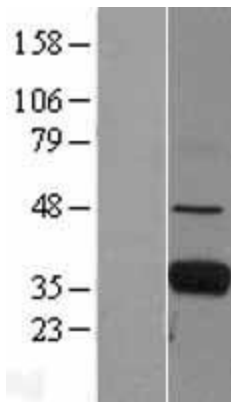
**MW:** 35.1 kDa

**Gene Summary:** The ficolin family of proteins are characterized by the presence of a leader peptide, a short N-terminal segment, followed by a collagen-like region, and a C-terminal fibrinogen-like domain. The collagen-like and the fibrinogen-like domains are also found separately in other proteins such as complement protein C1q, C-type lectins known as collectins, and tenascins. However, all these proteins recognize different targets, and are functionally distinct. Ficolin 1 encoded by FCN1 is predominantly expressed in the peripheral blood leukocytes, and has been postulated to function as a plasma protein with elastin-binding activity. [provided by RefSeq, Jul 2008]

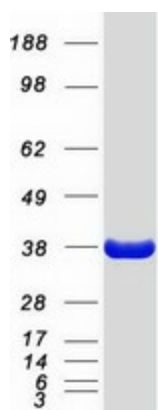
Product images:



Circular map for RC204637



Western blot validation of overexpression lysate (Cat# [LY400731]) using anti-DDK antibody (Cat# [TA50011-100]). Left: Cell lysates from untransfected HEK293T cells; Right: Cell lysates from HEK293T cells transfected with RC204637 using transfection reagent MegaTran 2.0 (Cat# [TT210002]).



Coomassie blue staining of purified FCN1 protein (Cat# [TP304637]). The protein was produced from HEK293T cells transfected with FCN1 cDNA clone (Cat# RC204637) using MegaTran 2.0 (Cat# [TT210002]).