

Product datasheet for **RC204636**

CCN5 (NM_003881) Human Tagged ORF Clone

Product data:

Product Type:	Expression Plasmids
Product Name:	CCN5 (NM_003881) Human Tagged ORF Clone
Tag:	Myc-DDK
Symbol:	CCN5
Synonyms:	CT58; CTGF-L; WISP2
Mammalian Cell Selection:	Neomycin
Vector:	pCMV6-Entry (PS100001)
E. coli Selection:	Kanamycin (25 ug/mL)
ORF Nucleotide Sequence:	>RC204636 ORF sequence Red=Cloning site Blue=ORF Green=Tags(s)

TTTTGTAATACGACTCACTATAGGGCGCCGGGAATTCGTCGACTGGATCCGGTACCGAGGAGATCTGCC
GCC**CGATCGCC**

ATGAGAGGCACACCGAAGACCCACCTCCTGGCCTTCTCCCTCCTCTGCCTCCTCTCAAAGGTGCGTACCC
AGCTGTGCCCGACACCATGTACCTGCCCTGGCCACCTCCCCGATGCCCGCTGGGAGTACCCCTGGTGCT
GGATGGCTGTGGCTGCTGCCGGGTATGTGCACGGCGGCTGGGGGAGCCCTGCGACCAACTCCACGTCTGC
GACGCCAGCCAGGGCCTGGTCTGCCAGCCCGGGCAGGACCCGGTGGCCGGGGGCCCTGTGCCTCTTGG
CAGAGGACGACAGCAGCTGTGAGGTGAACGGCCGCTGTATCGGGAAGGGGAGACCTTCCAGCCCCACTG
CAGCATCCGCTGCCGCTGCGAGGACGGCGCTTACCTGCGTGCCGCTGTGCAGCGAGGATGTGCGGCTG
CCCAGCTGGGACTGCCCCACCCAGGAGGGTTCGAGGTCCCTGGGCAAGTGTGCCCTGAGTGGGTGTGCG
GCCAAGGAGGGGGACTGGGGACCCAGCCCTTCCAGCCAAGGACCCAGTTTTTCTGGCCTTGTCTCTTC
CCTGCCCCCTGGTGTCCCTGCCAGAATGGAGCACGGCTGGGGACCCCTGCTCGACCACCTGTGGGCTG
GGCATGGCCACCCGGGTGCCAACCAGAACCGCTTCTGCCGACTGGAGACCCAGCGCCGCTGTGCCTGT
CCAGGCCCTGCCACCCTCCAGGGTTCGAGTCCACAAAACAGTGCCTTC

ACGCGTACGGCGCGCTCGAGCAGAACTCATCTCAGAAGAGGATCTGGCAGCAAATGATATCCTGGATT
ACAAGGATGACGACGATAAGGTTTAA



[View online »](#)

Protein Sequence: >RC204636 protein sequence
Red=Cloning site Green=Tags(s)

MRGTPKTHLLAFSLCLLSKVRTQLCPTPCTCPWPPRCPLGVPLVLDGCGCCRVCCARRLGEPCDQLHVC
 DASOGLVCQPGAGPGGRGALCLLAEDDSSEVNGRLYREGETFQPHCSIRCRCEGGFTCVPLCSEDVRL
 PSWDCPHPRRVEVLGKCCPEWVCGGGGLGTQLPLAQGPQFSGLVSSLPPGVPCPEWSTAWGPCSTTCGL
 GMATRVSNQNRFCRLETQRRLCLSRPCPPSRGRSPQNSAF

TRTRPLEQKLISEEDLAANDILDYKDDDDKV

Chromatograms: https://cdn.origene.com/chromatograms/mk6068_e01.zip

Restriction Sites: SgfI-MluI

Cloning Scheme:

Cloning sites used for ORF Shuttling:



* The last codon before the Stop codon of the ORF

ACCN: NM_003881

ORF Size: 750 bp

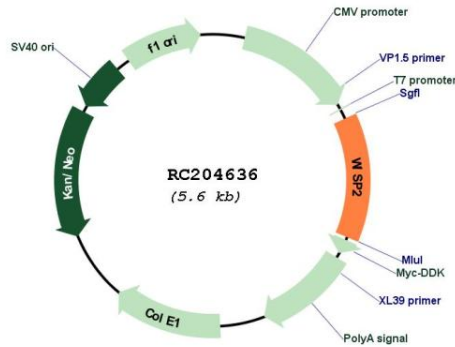
OTI Disclaimer: Due to the inherent nature of this plasmid, standard methods to replicate additional amounts of DNA in E. coli are highly likely to result in mutations and/or rearrangements. Therefore, OriGene does not guarantee the capability to replicate this plasmid DNA. Additional amounts of DNA can be purchased from OriGene with batch-specific, full-sequence verification at a reduced cost. Please contact our customer care team at custsupport@origene.com or by calling 301.340.3188 option 3 for pricing and delivery.

The molecular sequence of this clone aligns with the gene accession number as a point of reference only. However, individual transcript sequences of the same gene can differ through naturally occurring variations (e.g. polymorphisms), each with its own valid existence. This clone is substantially in agreement with the reference, but a complete review of all prevailing variants is recommended prior to use. [More info](#)

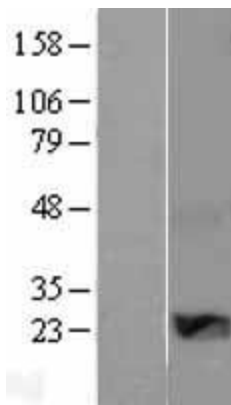
OTI Annotation: This clone was engineered to express the complete ORF with an expression tag. Expression varies depending on the nature of the gene.

Components:	The ORF clone is ion-exchange column purified and shipped in a 2D barcoded Matrix tube containing 10ug of transfection-ready, dried plasmid DNA (reconstitute with 100 ul of water).
Reconstitution Method:	<ol style="list-style-type: none">1. Centrifuge at 5,000xg for 5min.2. Carefully open the tube and add 100ul of sterile water to dissolve the DNA.3. Close the tube and incubate for 10 minutes at room temperature.4. Briefly vortex the tube and then do a quick spin (less than 5000xg) to concentrate the liquid at the bottom.5. Store the suspended plasmid at -20°C. The DNA is stable for at least one year from date of shipping when stored at -20°C.
Note:	Plasmids are not sterile. For experiments where strict sterility is required, filtration with 0.22um filter is required.
RefSeq:	NM_003881.3
RefSeq Size:	1433 bp
RefSeq ORF:	753 bp
Locus ID:	8839
UniProt ID:	Q76076
Cytogenetics:	20q13.12
Protein Families:	Druggable Genome, ES Cell Differentiation/IPS, Secreted Protein
MW:	26.8 kDa
Gene Summary:	<p>This gene encodes a member of the WNT1 inducible signaling pathway (WISP) protein subfamily, which belongs to the connective tissue growth factor (CTGF) family. WNT1 is a member of a family of cysteine-rich, glycosylated signaling proteins that mediate diverse developmental processes. The CTGF family members are characterized by four conserved cysteine-rich domains: insulin-like growth factor-binding domain, von Willebrand factor type C module, thrombospondin domain and C-terminal cystine knot-like (CT) domain. The encoded protein lacks the CT domain which is implicated in dimerization and heparin binding. It is 72% identical to the mouse protein at the amino acid level. This gene may be downstream in the WNT1 signaling pathway that is relevant to malignant transformation. Its expression in colon tumors is reduced while the other two WISP members are overexpressed in colon tumors. It is expressed at high levels in bone tissue, and may play an important role in modulating bone turnover. [provided by RefSeq, Jul 2008]</p>

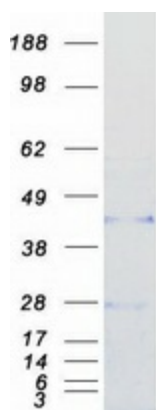
Product images:



Circular map for RC204636



Western blot validation of overexpression lysate (Cat# [LY401279]) using anti-DDK antibody (Cat# [TA50011-100]). Left: Cell lysates from untransfected HEK293T cells; Right: Cell lysates from HEK293T cells transfected with RC204636 using transfection reagent MegaTran 2.0 (Cat# [TT210002]).



Coomassie blue staining of purified CCN5 protein (Cat# [TP304636]). The protein was produced from HEK293T cells transfected with CCN5 cDNA clone (Cat# RC204636) using MegaTran 2.0 (Cat# [TT210002]).