

Product datasheet for **RC204632**

IDI2 (NM_033261) Human Tagged ORF Clone

Product data:

Product Type:	Expression Plasmids
Product Name:	IDI2 (NM_033261) Human Tagged ORF Clone
Tag:	Myc-DDK
Symbol:	IDI2
Synonyms:	IPPI2
Mammalian Cell Selection:	Neomycin
Vector:	pCMV6-Entry (PS100001)
E. coli Selection:	Kanamycin (25 ug/mL)
ORF Nucleotide Sequence:	>RC204632 ORF sequence Red=Cloning site Blue=ORF Green=Tags(s)

TTTTGTAATACGACTCACTATAGGGCGCCGGAATTCGTCGACTGGATCCGGTACCGAGGAGATCTGCC
GCC**CGATCGCC**

ATGTCTGACATAAATCTTGACTGGGTTGACAGGCGTCAGTTGCAGCGCTTGGAGGAAATGCTGATTGTTG
TGGATGAGAAATGATAAGGTTATTGGTGCCGACACCAAGAGGAATTGCCATCTGAACGAAAACATTGAGAA
AGGGCTGCTGCACCGAGCCTTCAGCGTTGTCTTGTAAACACCAAGAATCGAATCCTGATACAGCAGAGG
TCGGACACGAAAGTCACGTTTCTGGGTATTTACCGACTCCTGTAGTAGCCACCCATTATACAACCCAG
CAGAACTGGAAGAAAAGGATGCCATCGGAGTGAGGAGGGCAGCCAGAGGCGTCTGCAAGCAGAGCTGGG
AATTCCTGGGAGCAGATTTCTCCAGAGGACATTGTGTTTCATGACAATCTATCACCACAAGGCAAAATCA
GACAGAATTTGGGGAGAGCATGAAATTTGTTACCTTCTGCTTGTGAGGAAAAACGTCACCTCTGAACCCGG
ATCCCAGTGAAACGAAAAGCATCCTCTACCTGTCCCAGGAGGAGCTGTGGGAGCTGCTGGAGAGGGAGGC
GAGGGGTGAAGTCAAAGTCACCCCTGGCTAAGAACCATTGCCGAGAGGTTTCTGTACCGGTGGTGGCCT
CACCTGGATGACGTGACCCCGTTTGTGGAGCTTCACAAAATACACAGAGTG

ACGCGTACGCGGCGCTCGAGCAGAAACTCATCTCAGAAGAGGATCTGGCAGCAAATGATATCCTGGATT
ACAAGGATGACGACGATAAGGTTTAA



[View online »](#)

Protein Sequence: >RC204632 protein sequence
Red=Cloning site Green=Tags(s)

MSDINLDWVDRRQLQRLEEMLIIVDENDKVI GADTKRNCHLNENIEKGLLHRAFSVVL FNTKNRILIQQR
SDTKVTFPGYFTDSCSSHPLYNPAELEEKDAIGVRRAAQRRLQ AELGIPGEQISPEDIVFMTIYHHKAKS
DRIWGEHEICYLLLVRKNVTLNPD PSETKSILYLSQEELWELLEREARGEVKVTPWLRTIAERFLYRWWP
HLDDVTPFVELHKIHRV

TRTRPLEQKLISEEDLAANDILDYKDDDDKV

Chromatograms: https://cdn.origene.com/chromatograms/mk6439_c11.zip

Restriction Sites: SgfI-MluI

Cloning Scheme:

Cloning sites used for ORF Shuttling:



* The last codon before the Stop codon of the ORF

ACCN: NM_033261

ORF Size: 681 bp

OTI Disclaimer: The molecular sequence of this clone aligns with the gene accession number as a point of reference only. However, individual transcript sequences of the same gene can differ through naturally occurring variations (e.g. polymorphisms), each with its own valid existence. This clone is substantially in agreement with the reference, but a complete review of all prevailing variants is recommended prior to use. [More info](#)

OTI Annotation: This clone was engineered to express the complete ORF with an expression tag. Expression varies depending on the nature of the gene.

Components: The ORF clone is ion-exchange column purified and shipped in a 2D barcoded Matrix tube containing 10ug of transfection-ready, dried plasmid DNA (reconstitute with 100 ul of water).

Reconstitution Method:

1. Centrifuge at 5,000xg for 5min.
2. Carefully open the tube and add 100ul of sterile water to dissolve the DNA.
3. Close the tube and incubate for 10 minutes at room temperature.
4. Briefly vortex the tube and then do a quick spin (less than 5000xg) to concentrate the liquid at the bottom.
5. Store the suspended plasmid at -20°C. The DNA is stable for at least one year from date of shipping when stored at -20°C.

Note: Plasmids are not sterile. For experiments where strict sterility is required, filtration with 0.22um filter is required.

RefSeq: [NM_033261.3](#)

RefSeq Size: 1359 bp

RefSeq ORF: 684 bp

Locus ID: 91734

UniProt ID: [Q9BXS1](#)

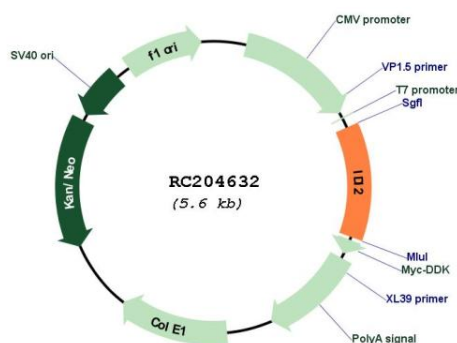
Cytogenetics: 10p15.3

Protein Pathways: Metabolic pathways, Terpenoid backbone biosynthesis

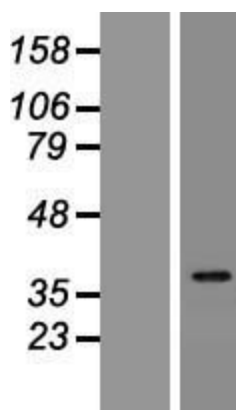
MW: 26.8 kDa

Gene Summary: The protein encoded by this gene catalyzes the conversion of isopentenyl diphosphate to dimethylallyl diphosphate, which is a precursor for the synthesis of cholesterol and other isoprenoids. This gene, which is a product of an ancestral gene duplication event, encodes a protein that may be involved in the aggregation of alpha-synuclein in the cerebral cortex of patients with Lewy body disease. In addition, segmental copy number gains in this locus have been associated with sporadic amyotrophic lateral sclerosis. [provided by RefSeq, Jul 2016]

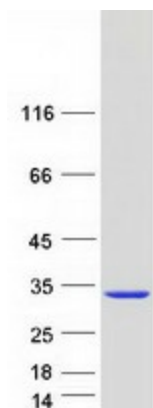
Product images:



Circular map for RC204632



Western blot validation of overexpression lysate (Cat# [LY409635]) using anti-DDK antibody (Cat# [TA50011-100]). Left: Cell lysates from untransfected HEK293T cells; Right: Cell lysates from HEK293T cells transfected with RC204632 using transfection reagent MegaTran 2.0 (Cat# [TT210002]).



Coomassie blue staining of purified IDI2 protein (Cat# [TP304632]). The protein was produced from HEK293T cells transfected with IDI2 cDNA clone (Cat# RC204632) using MegaTran 2.0 (Cat# [TT210002]).