

## Product datasheet for **RC204630**

### **C11orf1 (NM\_022761) Human Tagged ORF Clone**

#### Product data:

**Product Type:** Expression Plasmids  
**Product Name:** C11orf1 (NM\_022761) Human Tagged ORF Clone  
**Tag:** Myc-DDK  
**Symbol:** C11orf1  
**Vector:** pCMV6-Entry (PS100001)  
**E. coli Selection:** Kanamycin (25 ug/mL)  
**Cell Selection:** Neomycin  
**ORF Nucleotide Sequence:** >RC204630 ORF sequence  
Red=Cloning site Blue=ORF Green=Tags(s)

TTTTGTAATACGACTCACTATAGGGCGGCCGGAATTCGTCGACTGGATCCGGTACCGAGGAGATCTGCC  
GCC**GCGATCGCC**

ATGGCTGCCTCCAGTGTCTCTGCTGCTCAAAATTTCTCTTCCAGAGACAGAACCTCGCCTGTTTCCTCA  
CAAACCCACACTGTGCAGCCTTGTTAATGCAGATGGCCATGGTGAAGTGTGGACAGATTGGAATAATAT  
GTCCAAGTTTTTCCAGTATGGATGGCGATGCACCACTAATGAGAATACCTATTCAAACCGTACCCGTGATG  
GGCAACTGGAACCAAGAAAGATATGACCTGAGGAATATCGTGCAGCCCAACCCCTTGCCCTCCCAGTTTG  
GACACTACTTTGAAACAACATATGATACAAGCTACAACAACAAAATGCCACTTTCAACACATAGATTTAA  
GCGAGAGCCTCACTGGTCCCAGGACATCAACCTGAACCTGGATCCTCCCCGATACAAATGCACAGAAAAG  
TCAACTTACATGAATAGCTATTCAAAGCCT

**ACGCGT**ACGCGGCCGCTCGAGCAGAAACTCATCTCAGAAGAGGATCTGGCAGCAATGATATCCTGGATT  
ACAAGGATGACGACGATAAGGTTTAA

**Protein Sequence:** >RC204630 protein sequence  
Red=Cloning site Green=Tags(s)

MAASQCLCCSKFLFQRQNLACFLTNPHCGSLVNADGHGEVWTDWNNMSKFFQYGWRCTTNENTYSNRTL  
MGNWNQERYDLRNIVQPKPLPSQFGHYFETTYDTSYNNKMPLSTHRFKREPHWFPGHQPELDP  
PPRYKCTEKSTYMNSYSKP

**TR**TRPLEQKLISEEDLAANDILDYKDDDDKV

**Chromatograms:** [https://cdn.origene.com/chromatograms/mk6439\\_c12.zip](https://cdn.origene.com/chromatograms/mk6439_c12.zip)

**Restriction Sites:** SgfI-MluI

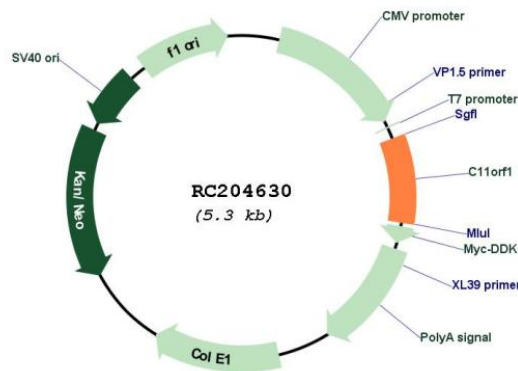


[View online »](#)

Cloning Scheme:



Plasmid Map:



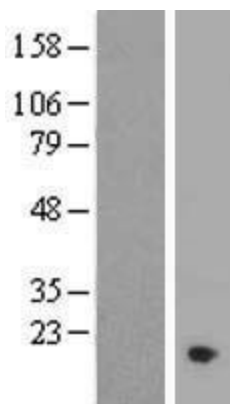
ACCN: NM\_022761

ORF Size: 450 bp

OTI Disclaimer: The molecular sequence of this clone aligns with the gene accession number as a point of reference only. However, individual transcript sequences of the same gene can differ through naturally occurring variations (e.g. polymorphisms), each with its own valid existence. This clone is substantially in agreement with the reference, but a complete review of all prevailing variants is recommended prior to use. [More info](#)

OTI Annotation: This clone was engineered to express the complete ORF with an expression tag. Expression varies depending on the nature of the gene.

RefSeq: [NM\\_022761.3](#)  
RefSeq Size: 984 bp  
RefSeq ORF: 453 bp  
Locus ID: 64776  
  
UniProt ID: [Q9H5F2](#)  
MW: 17.8 kDa

**Product images:**

Western blot validation of overexpression lysate (Cat# [LY411579]) using anti-DDK antibody (Cat# [TA50011-100]). Left: Cell lysates from untransfected HEK293T cells; Right: Cell lysates from HEK293T cells transfected with RC204630 using transfection reagent MegaTran 2.0 (Cat# [TT210002]).