

Product datasheet for RC204629

Alpha 1 Acid Glycoprotein (ORM1) (NM_000607) Human Tagged ORF Clone

Product data:

Product Type: Expression Plasmids
Product Name: Alpha 1 Acid Glycoprotein (ORM1) (NM_000607) Human Tagged ORF Clone
Tag: Myc-DDK
Symbol: Alpha 1 Acid Glycoprotein
Synonyms: AGP-A; AGP1; HEL-S-153w; ORM
Mammalian Cell Selection: Neomycin
Vector: pCMV6-Entry (PS100001)
E. coli Selection: Kanamycin (25 ug/mL)
ORF Nucleotide Sequence: >RC204629 ORF sequence
 Red=Cloning site Blue=ORF Green=Tags(s)

TTTTGTAATACGACTCACTATAGGGCGCCGGGAATTCGTCGACTGGATCCGGTACCGAGGAGATCTGCC
 GCC**CGATCGCC**

ATGGCGCTGTCTGGGTTCTTACAGTCCTGAGCCTCTACCTCTGCTGGAAGCCAGATCCCATTGTGTG
 CCAACCTAGTACCGGTGCCCATACCAACGCCACCCTGGACCGGATCACTGGCAAGTGGTTTTATATCGC
 ATCGGCTTTTCAAACGAGGAGTACAATAAGTCGGTTCAGGAGATCCAAGCAACCTTCTTTTACTTCACC
 CCCAACAGACAGAGGACAGCATCTTTCTCAGAGAGTACCAGACCCGACAGGACCAGTGCATCTATAACA
 CCACCTACCTGAATGTCCAGCGGAAAAATGGGACCATCTCCAGATACGTGGGAGGCAAGAGCATTTCGC
 TCACTTGCTGATCCTCAGGGACACCAAGACCTACATGCTTGTCTTTGACGTGAACGATGAGAAGAACTGG
 GGGCTGTCTGTCTATGCTGACAAGCCAGAGACGACCAAGGAGCAACTGGGAGAGTTCTACGAAGCTCTCG
 ACTGCTTGCGCATTCCCAAGTCAGATGTCGTGTACACCGATTGGAAAAAGGATAAGTGTGAGCCACTGGA
 GAAGCAGCACGAGAAGGAGAGGAAACAGGAGGAGGGGGAATCC

ACGCGTACGCGGCCGCTCGAGCAGAACTCATCTCAGAAGAGGATCTGGCAGCAATGATATCCTGGATT
 ACAAGGATGACGACGATAAGGTTTAA

Protein Sequence: >RC204629 protein sequence
 Red=Cloning site Green=Tags(s)

MALSWLTVLSLLPLLEAQIPLCANLVPVITNATLDRITGKWFYIASAFRNEEYKNSVQEIQATFFYFT
 PNKTEDTIFLREYQTRQDQCIYNTTYLNVQRENGTISRIVGGQEHFAHLLILRDTKTYMLAFDVNDEKNW
 GLSVYADKPETTKEQLGEFYALDCLRIPKSDVVYTDWKKDKCEPLEKQHEKERKQEEGES

TRTRPLEQKLISEEDLAANDILDYKDDDDKV

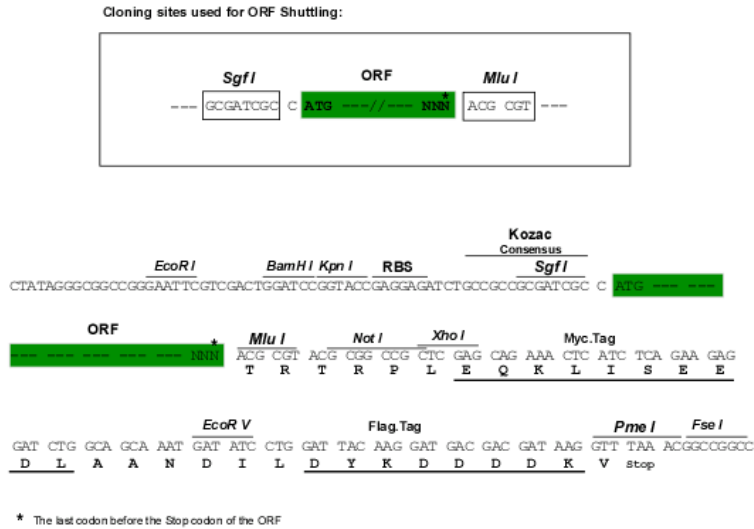


[View online »](#)

Chromatograms: https://cdn.origene.com/chromatograms/mk6069_f07.zip

Restriction Sites: SgfI-MluI

Cloning Scheme:



ACCN: NM_000607

ORF Size: 603 bp

OTI Disclaimer: The molecular sequence of this clone aligns with the gene accession number as a point of reference only. However, individual transcript sequences of the same gene can differ through naturally occurring variations (e.g. polymorphisms), each with its own valid existence. This clone is substantially in agreement with the reference, but a complete review of all prevailing variants is recommended prior to use. [More info](#)

OTI Annotation: This clone was engineered to express the complete ORF with an expression tag. Expression varies depending on the nature of the gene.

Components: The ORF clone is ion-exchange column purified and shipped in a 2D barcoded Matrix tube containing 10ug of transfection-ready, dried plasmid DNA (reconstitute with 100 ul of water).

- Reconstitution Method:**
1. Centrifuge at 5,000xg for 5min.
 2. Carefully open the tube and add 100ul of sterile water to dissolve the DNA.
 3. Close the tube and incubate for 10 minutes at room temperature.
 4. Briefly vortex the tube and then do a quick spin (less than 5000xg) to concentrate the liquid at the bottom.
 5. Store the suspended plasmid at -20°C. The DNA is stable for at least one year from date of shipping when stored at -20°C.

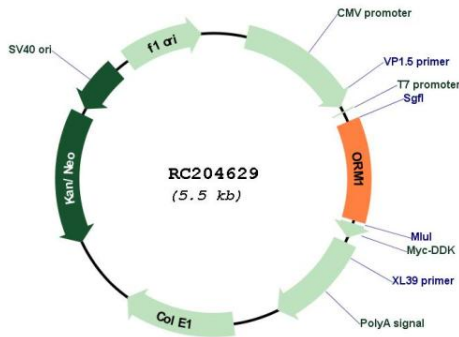
Note: Plasmids are not sterile. For experiments where strict sterility is required, filtration with 0.22um filter is required.

RefSeq: [NM_000607.4](#)

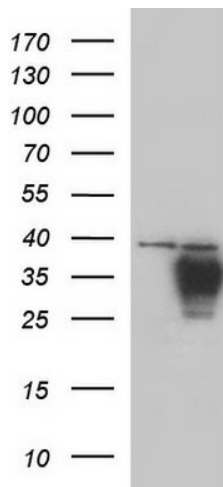
RefSeq Size: 847 bp

RefSeq ORF:	606 bp
Locus ID:	5004
UniProt ID:	P02763
Cytogenetics:	9q32
Domains:	lipocalin
Protein Families:	Druggable Genome, Secreted Protein
MW:	23.5 kDa
Gene Summary:	This gene encodes a key acute phase plasma protein. Because of its increase due to acute inflammation, this protein is classified as an acute-phase reactant. The specific function of this protein has not yet been determined; however, it may be involved in aspects of immunosuppression. [provided by RefSeq, Jul 2008]

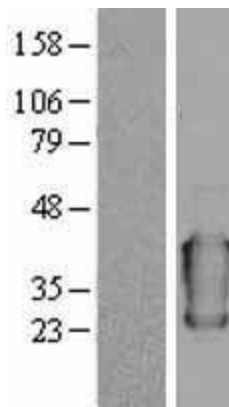
Product images:



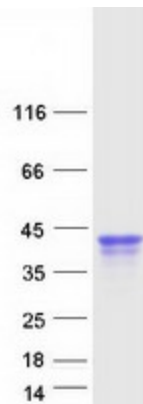
Circular map for RC204629



HEK293T cells were transfected with the pCMV6-ENTRY control (Cat# [PS100001], Left lane) or pCMV6-ENTRY ORM1 (Cat# RC204629, Right lane) cDNA for 48 hrs and lysed. Equivalent amounts of cell lysates (5 ug per lane) were separated by SDS-PAGE and immunoblotted with anti-ORM1 (Cat# [TA590025]). Positive lysates [LY400202] (100ug) and [LC400202] (20ug) can be purchased separately from OriGene.



Western blot validation of overexpression lysate (Cat# [LY400202]) using anti-DDK antibody (Cat# [TA50011-100]). Left: Cell lysates from untransfected HEK293T cells; Right: Cell lysates from HEK293T cells transfected with RC204629 using transfection reagent MegaTran 2.0 (Cat# [TT210002]).



Coomassie blue staining of purified ORM1 protein (Cat# [TP304629]). The protein was produced from HEK293T cells transfected with ORM1 cDNA clone (Cat# RC204629) using MegaTran 2.0 (Cat# [TT210002]).