

Product datasheet for RC204627

TREM1 (NM_018643) Human Tagged ORF Clone

Product data:

Product Type:	Expression Plasmids
Product Name:	TREM1 (NM_018643) Human Tagged ORF Clone
Tag:	Myc-DDK
Symbol:	TREM1
Synonyms:	CD354; TREM-1
Mammalian Cell Selection:	Neomycin
Vector:	pCMV6-Entry (PS100001)
E. coli Selection:	Kanamycin (25 ug/mL)
ORF Nucleotide Sequence:	>RC204627 ORF sequence Red=Cloning site Blue=ORF Green=Tags(s)

TTTTGTAATACGACTCACTATAGGGCGCCGGGAATTCGTCGACTGGATCCGGTACCGAGGAGATCTGCC
GCC**CGATCGCC**

ATGAGGAAGACCAGGCTCTGGGGCTGCTGTGGATGCTCTTTGTCTCAGAACTCCGAGCTGCAACTAAAT
TAACTGAGGAAAAGTATGAACTGAAAGAGGGGCAGACCCTGGATGTGAAATGTGACTACACGCTAGAGAA
GTTTGCCAGCAGCCAGAAAGCTTGGCAGATAATAAGGGACGGAGAGATGCCAAGACCCTGGCATGCACA
GAGAGGCCTTCAAAGAATCCCATCCAGTCCAAGTGGGAGGATCATACTAGAAGACTACCATGATCATG
GTTTACTGCGCGTCCGAATGGTCAACCTTCAAGTGAAGATTCTGGACTGTATCAGTGTGTGATCTACCA
GCCTCCCAAGGAGCCTCACATGCTGTTGATCGCATCCGCTTGGTGGTGACCAAGGGTTTTTCAGGGACC
CCTGGCTCCAATGAGAATTCTACCCAGAATGTGTATAAGATTCCTCCTACCACCACTAAGGCCTTGTGCC
CACTCTATACCAGCCCCAGAAGTGTGACCCAAGCTCCACCCAAGTCAACTGCCGATGTCTCCACTCCTGA
CTCTGAAATCAACCTTACAAATGTGACAGATATCATCAGGGTCCGGTGTCAACATTGTCACTTCTCCTG
GCTGGTGGATTCTGAGTAAGAGCCTGGTCTTCTGTCTGTTGCTGTACGCTGAGGTCATTTGTAC
CC

ACGCGTACGCGGCCGCTCGAGCAGAACTCATCTCAGAAGAGGATCTGGCAGCAAATGATATCCTGGATT
ACAAGGATGACGACGATAAGGTTTAA



[View online »](#)

Protein Sequence: >RC204627 protein sequence
Red=Cloning site Green=Tags(s)

MRKTRLWGLLWMLFVSELRAATKLTTEEKYLKEGQTLDVKCDYTLEKFASSQKAWQIIRDGEMPKTLACT
 ERPSKNSHPVQVGRILEEDYHDHGLLRVRMVLQVEDSGLYQCVIYQPPKEPHMLFDRIRLVVTKGFSGT
 PGSNENSTQNVYIPPTTTKALCPLYTSPRTVTQAPPKSTADVSTPDSEINLTNVTDIIRVVPVFNIVILL
 AGGFLSKSLVFSVLFVAVTLRSFVP

TRTRPLEQKLISEEDLAANDILDYKDDDDKV

Chromatograms: https://cdn.origene.com/chromatograms/mk6068_a05.zip

Restriction Sites: SgfI-MluI

Cloning Scheme:

Cloning sites used for ORF Shuttling:



* The last codon before the Stop codon of the ORF

ACCN: NM_018643

ORF Size: 702 bp

OTI Disclaimer: The molecular sequence of this clone aligns with the gene accession number as a point of reference only. However, individual transcript sequences of the same gene can differ through naturally occurring variations (e.g. polymorphisms), each with its own valid existence. This clone is substantially in agreement with the reference, but a complete review of all prevailing variants is recommended prior to use. [More info](#)

OTI Annotation: This clone was engineered to express the complete ORF with an expression tag. Expression varies depending on the nature of the gene.

Components: The ORF clone is ion-exchange column purified and shipped in a 2D barcoded Matrix tube containing 10ug of transfection-ready, dried plasmid DNA (reconstitute with 100 ul of water).

Reconstitution Method:

1. Centrifuge at 5,000xg for 5min.
2. Carefully open the tube and add 100ul of sterile water to dissolve the DNA.
3. Close the tube and incubate for 10 minutes at room temperature.
4. Briefly vortex the tube and then do a quick spin (less than 5000xg) to concentrate the liquid at the bottom.
5. Store the suspended plasmid at -20°C. The DNA is stable for at least one year from date of shipping when stored at -20°C.

Note: Plasmids are not sterile. For experiments where strict sterility is required, filtration with 0.22um filter is required.

RefSeq: [NM_018643.5](#)

RefSeq Size: 1633 bp

RefSeq ORF: 705 bp

Locus ID: 54210

UniProt ID: [Q9NP99](#)

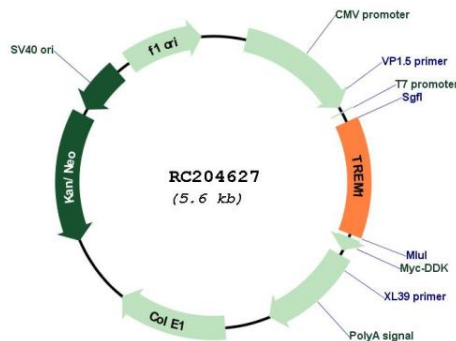
Cytogenetics: 6p21.1

Protein Families: Druggable Genome, Secreted Protein, Transmembrane

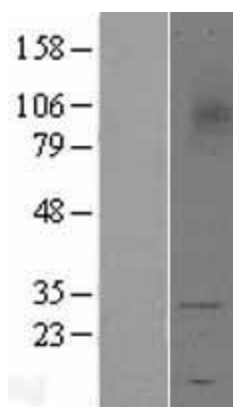
MW: 26.4 kDa

Gene Summary: This gene encodes a receptor belonging to the Ig superfamily that is expressed on myeloid cells. This protein amplifies neutrophil and monocyte-mediated inflammatory responses triggered by bacterial and fungal infections by stimulating release of pro-inflammatory chemokines and cytokines, as well as increased surface expression of cell activation markers. Alternatively spliced transcript variants encoding different isoforms have been noted for this gene.[provided by RefSeq, Jun 2011]

Product images:



Circular map for RC204627



Western blot validation of overexpression lysate (Cat# [LY402700]) using anti-DDK antibody (Cat# [TA50011-100]). Left: Cell lysates from untransfected HEK293T cells; Right: Cell lysates from HEK293T cells transfected with RC204627 using transfection reagent MegaTran 2.0 (Cat# [TT210002]).