

## Product datasheet for **RC204625**

### LGALS14 (NM\_020129) Human Tagged ORF Clone

#### Product data:

**Product Type:** Expression Plasmids  
**Product Name:** LGALS14 (NM\_020129) Human Tagged ORF Clone  
**Tag:** Myc-DDK  
**Symbol:** LGALS14  
**Synonyms:** CLC2; PPL13  
**Mammalian Cell Selection:** Neomycin  
**Vector:** pCMV6-Entry (PS100001)  
**E. coli Selection:** Kanamycin (25 ug/mL)  
**ORF Nucleotide Sequence:** >RC204625 ORF sequence  
 Red=Cloning site Blue=ORF Green=Tags(s)

TTTTGTAATACGACTCACTATAGGGCGGCCGGAATTCGTCGACTGGATCCGGTACCGAGGAGATCTGCC  
 GCC**CGGATCGCC**

ATGTCATCACTACCCGTACCATACACACTGCCTGTTTCCTTGCCTGTTGGTTCGTGCGTGATAATCACAG  
 GGACACCGATCCTCACTTTTGTCAAGGACCCACAGCTGGAGGTGAATTTCTACACTGGGATGGATGAGGA  
 CTCAGATATTGCTTTCCAATTCGACTGCACCTTGGTCATCCTGCAATCATGAACAGTCGTGTGTTGGC  
 ATATGGAGATATGAGGAGAAATGCTACTATTTACCCTTTGAAGATGGCAAACCATTTGAGCTGTGCATCT  
 ATGTGCGTCACAAGGAATACAAGGTAATGGTAAATGGCCAACGCATTTACAACCTTGCCCATCGATTCCC  
 GCCAGCATCTGTGAAGATGCTGCAAGTCTTGAGAGATATCTCCCTGACCAGAGTGCTTATCAGCGAT

**ACGCGT**ACGCGGCCGCTCGAGCAGAAACTCATCTCAGAAGAGGATCTGGCAGCAAATGATATCCTGGATT  
 ACAAGGATGACGACGATAAGGTTTAA

**Protein Sequence:** >RC204625 protein sequence  
 Red=Cloning site Green=Tags(s)

MSSLPVPYTLPVSLPVGSCVITITGTPILTFVKDPQLEVNFTGMDESDIAFQFRLHFGHPAIMNSRVFG  
 IWRYEEKCYLLPFEDGKPFELCIYVRHKEYKVMVNGQRIYNFAHRFPASVKMLQVLRDISLTRVLI

**TR**TRPLEQKLISEEDLAANDILDYKDDDDKV

**Chromatograms:** [https://cdn.origene.com/chromatograms/mk6551\\_f11.zip](https://cdn.origene.com/chromatograms/mk6551_f11.zip)

**Restriction Sites:** SgfI-MluI



[View online »](#)

**Cloning Scheme:**


**ACCN:** NM\_020129

**ORF Size:** 417 bp

**OTI Disclaimer:** The molecular sequence of this clone aligns with the gene accession number as a point of reference only. However, individual transcript sequences of the same gene can differ through naturally occurring variations (e.g. polymorphisms), each with its own valid existence. This clone is substantially in agreement with the reference, but a complete review of all prevailing variants is recommended prior to use. [More info](#)

**OTI Annotation:** This clone was engineered to express the complete ORF with an expression tag. Expression varies depending on the nature of the gene.

**Components:** The ORF clone is ion-exchange column purified and shipped in a 2D barcoded Matrix tube containing 10ug of transfection-ready, dried plasmid DNA (reconstitute with 100 ul of water).

- Reconstitution Method:**
1. Centrifuge at 5,000xg for 5min.
  2. Carefully open the tube and add 100ul of sterile water to dissolve the DNA.
  3. Close the tube and incubate for 10 minutes at room temperature.
  4. Briefly vortex the tube and then do a quick spin (less than 5000xg) to concentrate the liquid at the bottom.
  5. Store the suspended plasmid at -20°C. The DNA is stable for at least one year from date of shipping when stored at -20°C.

**RefSeq:** [NM\\_020129.3](#)

**RefSeq Size:** 794 bp

**RefSeq ORF:** 420 bp

**Locus ID:** 56891

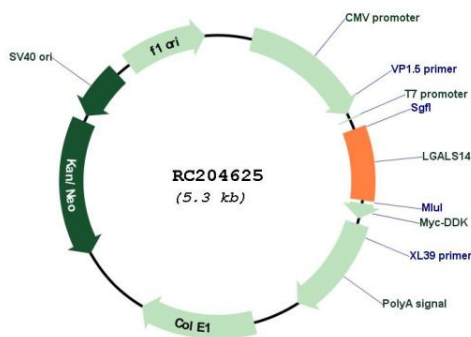
**UniProt ID:** [Q8TCE9](#)

**Cytogenetics:** 19q13.2  
**Domains:** Gal-bind\_lectin  
**Protein Families:** Transmembrane

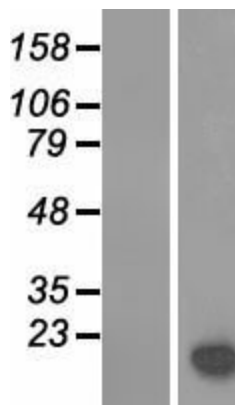
**MW:** 16.1 kDa

**Gene Summary:** This gene is predominantly expressed in placenta. The encoded protein belongs to the galectin (galaptin/S-lectin) family. The members of galectin family contain one or two carbohydrate recognition domains, which can bind beta-galactoside. Two alternatively spliced transcript variants encoding distinct isoforms have been observed. [provided by RefSeq, Jul 2008]

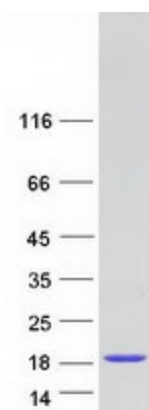
**Product images:**



Circular map for RC204625



Western blot validation of overexpression lysate (Cat# [LY412669]) using anti-DDK antibody (Cat# [TA50011-100]). Left: Cell lysates from untransfected HEK293T cells; Right: Cell lysates from HEK293T cells transfected with RC204625 using transfection reagent MegaTran 2.0 (Cat# [TT210002]).



Coomassie blue staining of purified LGALS14 protein (Cat# [TP304625]). The protein was produced from HEK293T cells transfected with LGALS14 cDNA clone (Cat# RC204625) using MegaTran 2.0 (Cat# [TT210002]).