

Product datasheet for **RC204623**

SPC25 (NM_020675) Human Tagged ORF Clone

Product data:

Product Type:	Expression Plasmids
Product Name:	SPC25 (NM_020675) Human Tagged ORF Clone
Tag:	Myc-DDK
Symbol:	SPC25
Synonyms:	AD024; hSpc25; SPBC25
Mammalian Cell Selection:	Neomycin
Vector:	pCMV6-Entry (PS100001)
E. coli Selection:	Kanamycin (25 ug/mL)
ORF Nucleotide Sequence:	>RC204623 ORF sequence Red=Cloning site Blue=ORF Green=Tags(s)

TTTTGTAATACGACTCACTATAGGGCGGCCGGAATTCGTCGACTGGATCCGGTACCGAGGAGATCTGCC
 GCC**CGATCGCC**

ATGGTAGAGGACGAAGTGGCACTTTTCGATAAAAGCATAAATGAATTTTGAATAAATTCAAAAGTACGG
 ACACCTCCTGTCAGATGGCGGGACTAAGAGATACCTACAAGGATCCATCAAAGCATTTGCAGAAAAGCT
 GTCTGTGAAATTAAGGAAGAAGAACGAATGGTTGAGATGTTTCTGGAATATCAAATCAGATCAGCAGG
 CAAAATAAGCTCATTCAAGAAAAAAGGATAAATTGTTAAATTTGATTGCTGAAGTAAAGGCAAAAAGC
 AGGAATTGGAAGTACTGACTGCAAAATATCCAGGATCTTAAGGAAGAATATTCTAGGAAGAAGGAACTAT
 TTCTACTGCTAATAAAGCGAATGCAGAGAGGTTGAAAAGGCTGCAGAAATCTGCAGACTTGATAAAGAT
 CGACTTGGACTAGAAATTCGAAAAATTTATGGTGAGAAATTGCAGTTTATTTTCACTAATATTGACCCTA
 AGAATCCTGAGAGCCCATTTATGTTTTCTTACATCTCAATGAAGCAAGGGACTATGAAGTGTGAGATAG
 TGCCCTCATCTTGAGGGCTAGCAGAAATTTCAAGAGAATGTAAGGAAGACCAACAATTTTTCAGCTTTT
 CTTGCCAATGTTTCGAAAGCTTTTACTGCCACGGTTTATAAT

ACGCGTACGCGGCCGCTCGAGCAGAACTCATCTCAGAAGAGGATCTGGCAGCAATGATATCCTGGATT
 ACAAGGATGACGACGATAAGGTTTAA


[View online »](#)

Protein Sequence: >RC204623 protein sequence
Red=Cloning site Green=Tags(s)

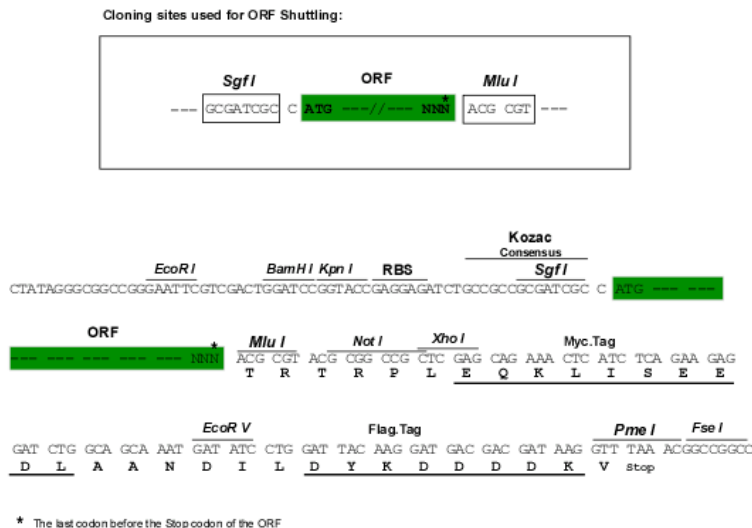
MVEDELALFDKSINEFWNFKSTDTSCQAGLRDITYKDSIKAFAEKLSVKLKEEERMVEMFLEYQNQISR
QNKLIQEKKDNLLKLI AEVKGKKQEVLVTANIQDLKEEYSRKKETISTANKANAERLKR LQKSADLYKD
RLGLEIRKIYGEKLQFIFTNIDPKNPESPFMSLHLNEARDYEVSDSAPHLEGLAEFQENVRKTNNFSAF
IANVRKAETATVYN

TRTRPLEOKLISEEDLAANDILDYKDDDDKV

Chromatograms: https://cdn.origene.com/chromatograms/mk6438_f04.zip

Restriction Sites: Sgfl-MluI

Cloning Scheme:



ACCN: NM 020675

ORF Size: 672 bp

OTI Disclaimer: The molecular sequence of this clone aligns with the gene accession number as a point of reference only. However, individual transcript sequences of the same gene can differ through naturally occurring variations (e.g. polymorphisms), each with its own valid existence. This clone is substantially in agreement with the reference, but a complete review of all prevailing variants is recommended prior to use. [More info](#)

OTI Annotation: This clone was engineered to express the complete ORF with an expression tag. Expression varies depending on the nature of the gene.

Components: The ORF clone is ion-exchange column purified and shipped in a 2D barcoded Matrix tube containing 10ug of transfection-ready, dried plasmid DNA (reconstitute with 100 ul of water).

Reconstitution Method:

1. Centrifuge at 5,000xg for 5min.
2. Carefully open the tube and add 100ul of sterile water to dissolve the DNA.
3. Close the tube and incubate for 10 minutes at room temperature.
4. Briefly vortex the tube and then do a quick spin (less than 5000xg) to concentrate the liquid at the bottom.
5. Store the suspended plasmid at -20°C. The DNA is stable for at least one year from date of shipping when stored at -20°C.

RefSeq: [NM_020675.4](#)

RefSeq Size: 1375 bp

RefSeq ORF: 675 bp

Locus ID: 57405

UniProt ID: [Q9HBM1](#)

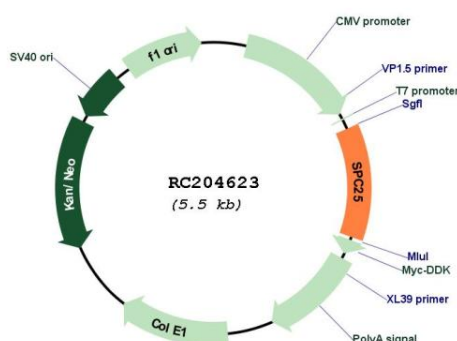
Cytogenetics: 2q24.3

Protein Families: Druggable Genome

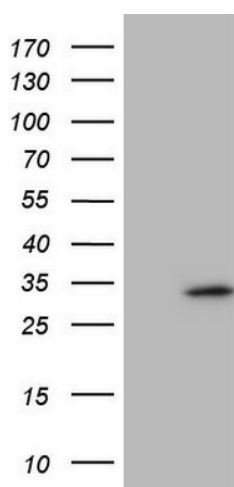
MW: 26.2 kDa

Gene Summary: This gene encodes a protein that may be involved in kinetochore-microtubule interaction and spindle checkpoint activity. [provided by RefSeq, Jul 2008]

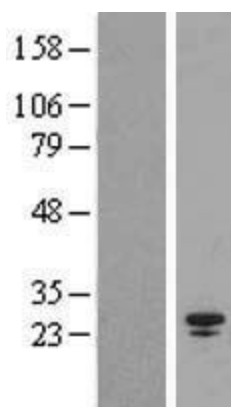
Product images:



Circular map for RC204623



HEK293T cells were transfected with the pCMV6-ENTRY control (Cat# [PS100001], Left lane) or pCMV6-ENTRY SPC25 (Cat# RC204623, Right lane) cDNA for 48 hrs and lysed. Equivalent amounts of cell lysates (5 ug per lane) were separated by SDS-PAGE and immunoblotted with anti-SPC25 (Cat# [TA806559]). Positive lysates [LY412309] (100ug) and [LC412309] (20ug) can be purchased separately from OriGene.



Western blot validation of overexpression lysate (Cat# [LY412309]) using anti-DDK antibody (Cat# [TA50011-100]). Left: Cell lysates from untransfected HEK293T cells; Right: Cell lysates from HEK293T cells transfected with RC204623 using transfection reagent MegaTran 2.0 (Cat# [TT210002]).