

## Product datasheet for RC204619

### Syndecan 4 (SDC4) (NM\_002999) Human Tagged ORF Clone

#### Product data:

**Product Type:** Expression Plasmids  
**Product Name:** Syndecan 4 (SDC4) (NM\_002999) Human Tagged ORF Clone  
**Tag:** Myc-DDK  
**Symbol:** SDC4  
**Synonyms:** SYND4  
**Mammalian Cell Selection:** Neomycin  
**Vector:** pCMV6-Entry (PS100001)  
**E. coli Selection:** Kanamycin (25 ug/mL)  
**ORF Nucleotide Sequence:** >RC204619 ORF sequence  
 Red=Cloning site Blue=ORF Green=Tags(s)

TTTTGTAATACGACTCACTATAGGGCGCCGGGAATTCGTCGACTGGATCCGGTACCGAGGAGATCTGCC  
 GCCCGCATCGCC

ATGGCCCCCGCCCGTCTGTTTCGGCTGCTGCTGTTCTTCGTAGGCGGAGTCGCCGAGTCGATCCGAGAGA  
 CTGAGGTCATCGACCCAGGACCTCCTAGAAGGCCGATACTTCTCCGGAGCCCTACCAGACGATGAGGA  
 TGTAGTGGGGCCCGGCAGGAATCTGATGACTTTGAGCTGTCTGGCTCTGGAGATCTGGATGACTTGAA  
 GACTCCATGATCGCCCTGAAGTTGTCCATCCCTTGGTGCCTCTAGATAACCATATCCCTGAGAGGGCAG  
 GGTCTGGGAGCCAAGTCCCACCGAACCAAGAACTAGAGGAGAATGAGGTTATCCCAAGAGAATCTC  
 ACCCGTTGAAGAGAGTGAGGATGTGTCCAACAAGGTGCAATGTCCAGCACTGTGCAGGGCAGCAACATC  
 TTTGAGAGAACGGAGGTCTGGCAGCTCTGATTGTGGGTGGCATCGTGGGCATCCTCTTTGCCGTCTTC  
 TGATCCTACTGCTCATGTACCGTATGAAGAAGAAGGATGAAGGCAGCTATGACCTGGGCAAGAAACCCAT  
 CTACAAGAAAGCCCCACCAATGAGTTCTACGCG

AGCGGACCGACGCGTACGCGCCGCTCGAGCAGAACTCATCTCAGAAGAGGATCTGGCAGCAAATGATATCC  
 TGGATTACAAGGATGACGACGATAAGGTTTAA

**Protein Sequence:** >RC204619 protein sequence  
 Red=Cloning site Green=Tags(s)

MAPARLFALLLFFVGGVAESIRETEVIDPQDLLEGRYFSGALPDDDEDVVGPGQESDDFELSGSGDLLDLE  
 DSMIGPEVVHPLVPLDNHUPERAGSGSQVPTPKKLEENEVIPKRISPVEESEDVSNKVSMSSTVQGSNI  
 FERTEVLAALIVGGIVGILFAVFLILLMYRMKKKDEGSYDLGKKPIYKKAPTNEFYA

SGPTRTRPLEQKLISEEDLAANDILDYKDDDDKV

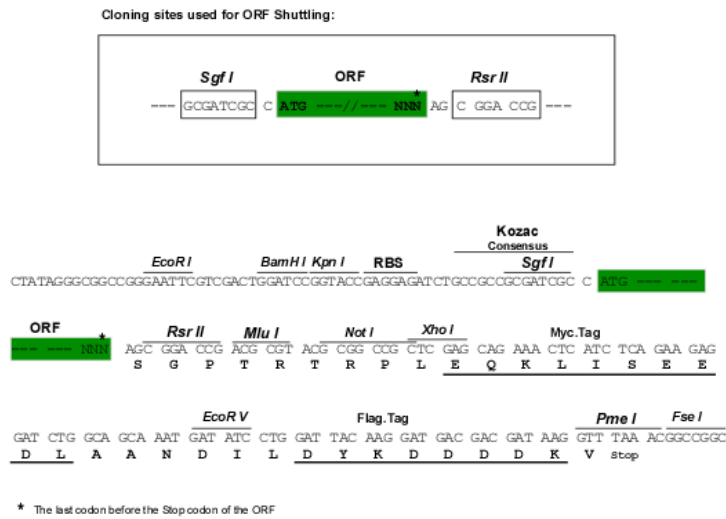


[View online »](#)

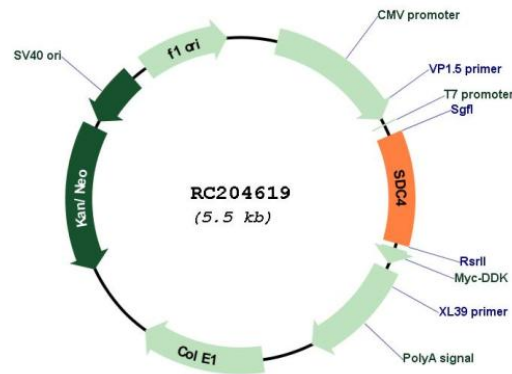
Chromatograms: [https://cdn.origene.com/chromatograms/mk6189\\_e08.zip](https://cdn.origene.com/chromatograms/mk6189_e08.zip)

Restriction Sites: SgfI-RsrII

Cloning Scheme:



Plasmid Map:



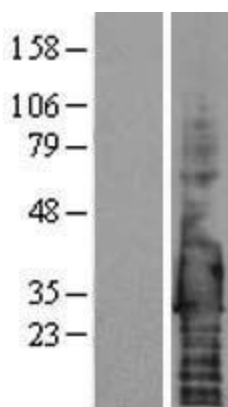
ACCN: NM\_002999

ORF Size: 594 bp

OTI Disclaimer: The molecular sequence of this clone aligns with the gene accession number as a point of reference only. However, individual transcript sequences of the same gene can differ through naturally occurring variations (e.g. polymorphisms), each with its own valid existence. This clone is substantially in agreement with the reference, but a complete review of all prevailing variants is recommended prior to use. [More info](#)

<b>OTI Annotation:</b>	This clone was engineered to express the complete ORF with an expression tag. Expression varies depending on the nature of the gene.
<b>Components:</b>	The ORF clone is ion-exchange column purified and shipped in a 2D barcoded Matrix tube containing 10ug of transfection-ready, dried plasmid DNA (reconstitute with 100 ul of water).
<b>Reconstitution Method:</b>	<ol style="list-style-type: none"><li>1. Centrifuge at 5,000xg for 5min.</li><li>2. Carefully open the tube and add 100ul of sterile water to dissolve the DNA.</li><li>3. Close the tube and incubate for 10 minutes at room temperature.</li><li>4. Briefly vortex the tube and then do a quick spin (less than 5000xg) to concentrate the liquid at the bottom.</li><li>5. Store the suspended plasmid at -20°C. The DNA is stable for at least one year from date of shipping when stored at -20°C.</li></ol>
<b>RefSeq:</b>	<a href="#">NM_002999.4</a>
<b>RefSeq Size:</b>	2615 bp
<b>RefSeq ORF:</b>	597 bp
<b>Locus ID:</b>	6385
<b>UniProt ID:</b>	<a href="#">P31431</a>
<b>Cytogenetics:</b>	20q13.12
<b>Protein Families:</b>	Druggable Genome, Transmembrane
<b>Protein Pathways:</b>	Cell adhesion molecules (CAMs), ECM-receptor interaction
<b>MW:</b>	21.6 kDa
<b>Gene Summary:</b>	The protein encoded by this gene is a transmembrane (type I) heparan sulfate proteoglycan that functions as a receptor in intracellular signaling. The encoded protein is found as a homodimer and is a member of the syndecan proteoglycan family. This gene is found on chromosome 20, while a pseudogene has been found on chromosome 22. [provided by RefSeq, Jul 2008]

### Product images:



Western blot validation of overexpression lysate (Cat# [LY401051]) using anti-DDK antibody (Cat# [TA50011-100]). Left: Cell lysates from untransfected HEK293T cells; Right: Cell lysates from HEK293T cells transfected with RC204619 using transfection reagent MegaTran 2.0 (Cat# [TT210002]).