

## Product datasheet for RC204617

### C10orf57 (TMEM254) (NM\_025125) Human Tagged ORF Clone

#### Product data:

Product Type:	Expression Plasmids
Product Name:	C10orf57 (TMEM254) (NM_025125) Human Tagged ORF Clone
Tag:	Myc-DDK
Symbol:	C10orf57
Synonyms:	bA369J21.6; C10orf57
Mammalian Cell Selection:	Neomycin
Vector:	pCMV6-Entry (PS100001)
E. coli Selection:	Kanamycin (25 ug/mL)
ORF Nucleotide Sequence:	>RC204617 ORF sequence Red=Cloning site Blue=ORF Green=Tags(s)

TTTTGTAATACGACTCACTATAGGGCGGCCGGAATTCGTCGACTGGATCCGGTACCGAGGAGATCTGCC  
GCC**CGATCGCC**

ATGGCTACGGCAGCCGGCGGACCTACTTTCAGCGAGGCAGTCTGTTCTGGTTCACAGTCATCACCCCTCA  
GCTTTGGCTACTACACATGGGTTGTCTTCTGGCCTCAGAGTATCCCTTATCAGAACCTTGGGCCCTGGG  
CCCCTTCACTCAGTACTGGTGGACCACCATCACACCCTCCTGTGCAATGGGATTGGCTTGCTGGCTG  
ATTCATGTGGGAGAGTCCTTGTATGCCATAGTATTGTGCAAGCATAAAGGCATCACAAGTGGTCGGGCTC  
AGCTACTCTGGTTCCTACAGACTTCTTCTTTGGGATAGCGTCTCTCACCATCTTGATTGCTTACAAACG  
GAAGCGCCAAAAACAACT

**ACGCGT**ACGCGGCCGCTCGAGCAGAAACTCATCTCAGAAGAGGATCTGGCAGCAAATGATATCCTGGATT  
ACAAGGATGACGACGATAAGGTTTAA

Protein Sequence:	>RC204617 protein sequence Red=Cloning site Green=Tags(s)
Chromatograms:	<a href="https://cdn.origene.com/chromatograms/mk6439_c09.zip">https://cdn.origene.com/chromatograms/mk6439_c09.zip</a>
Restriction Sites:	SgfI-MluI

MATAAGATYFQRGSLFWFTVITLSFGYYTWVFWPQSIPYQNLGPLGPFTQYLVDHHHTLLCNGYWLAWL  
IHWGESLYAIVLCKHKGITSGRAQLLWFLQTFFFGIASLTILIA YKRKRQKQT

TRTRPLEQKLISEEDLAANDILDYKDDDDKV



View online »

**Cloning Scheme:**


**ACCN:** NM\_025125

**ORF Size:** 369 bp

**OTI Disclaimer:** The molecular sequence of this clone aligns with the gene accession number as a point of reference only. However, individual transcript sequences of the same gene can differ through naturally occurring variations (e.g. polymorphisms), each with its own valid existence. This clone is substantially in agreement with the reference, but a complete review of all prevailing variants is recommended prior to use. [More info](#)

**OTI Annotation:** This clone was engineered to express the complete ORF with an expression tag. Expression varies depending on the nature of the gene.

**Components:** The ORF clone is ion-exchange column purified and shipped in a 2D barcoded Matrix tube containing 10ug of transfection-ready, dried plasmid DNA (reconstitute with 100 ul of water).

- Reconstitution Method:**
1. Centrifuge at 5,000xg for 5min.
  2. Carefully open the tube and add 100ul of sterile water to dissolve the DNA.
  3. Close the tube and incubate for 10 minutes at room temperature.
  4. Briefly vortex the tube and then do a quick spin (less than 5000xg) to concentrate the liquid at the bottom.
  5. Store the suspended plasmid at -20°C. The DNA is stable for at least one year from date of shipping when stored at -20°C.

**RefSeq:** [NM\\_025125.4](#)

**RefSeq Size:** 2079 bp

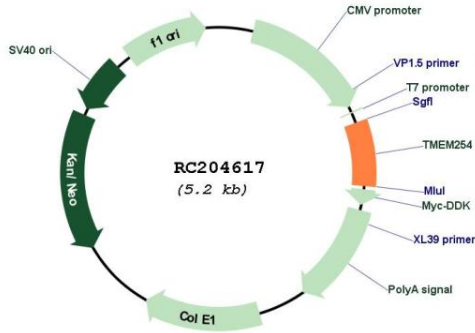
**RefSeq ORF:** 372 bp

**Locus ID:** 80195

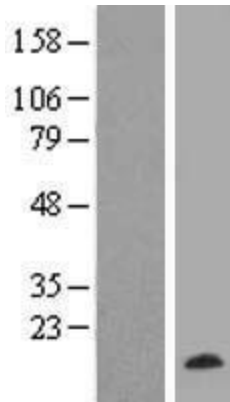
**UniProt ID:** [Q8TBM7](#)

Cytogenetics: 10q22.3  
 Protein Families: Druggable Genome, Transmembrane  
 MW: 14.2 kDa

**Product images:**



Circular map for RC204617



Western blot validation of overexpression lysate (Cat# [LY410896]) using anti-DDK antibody (Cat# [TA50011-100]). Left: Cell lysates from untransfected HEK293T cells; Right: Cell lysates from HEK293T cells transfected with RC204617 using transfection reagent MegaTran 2.0 (Cat# [TT210002]).