

Product datasheet for **RC204609**

LYVE1 (NM_006691) Human Tagged ORF Clone

Product data:

Product Type:	Expression Plasmids
Product Name:	LYVE1 (NM_006691) Human Tagged ORF Clone
Tag:	Myc-DDK
Symbol:	LYVE1
Synonyms:	CRSBP-1; HAR; LYVE-1; XLKD1
Mammalian Cell Selection:	Neomycin
Vector:	pCMV6-Entry (PS100001)
E. coli Selection:	Kanamycin (25 ug/mL)
ORF Nucleotide Sequence:	>RC204609 ORF sequence Red=Cloning site Blue=ORF Green=Tags(s)

TTTTGTAATACGACTCACTATAGGGCGGCCGGAATTCGTCGACTGGATCCGGTACCGAGGAGATCTGCC
GCC**CGATCGCC**

ATGGCCAGGTGCTTCAGCCTGGTGTGCTTCTCACTTCCATCTGGACCACGAGGCTCCTGGTCCAAGGCT
CTTTGCGTGCAGAAGAGCTTCCATCCAGGTGTCATGCAGAATTATGGGGATCACCTTGTGAGCAAAAA
GGCGAACAGCAGCTGAATTTACAGAAGCTAAGGAGCCTGTAGGCTGCTGGGACTAAGTTTGGCCGGC
AAGGACCAAGTTGAAACAGCCTTCAAAGCTAGCTTTGAACTTGACGCTATGGCTGGGTTGGAGATGGAT
TCGTGGTCATCTCTAGGATTAGCCAAAACCCCAAGTGTGGAAAAATGGGGTGGGTGCTCCTGATTAGGAA
GGTTCCAGTGAGCCGACAGTTTGCAGCCTATTGTTACAACCTCATCTGATACTTGGACTAACTCGTGCAAT
CCAGAAATTATCACCAACAAAGATCCCATATTTCAACACTCAAACCTGCAACACAAACAACAGAAATTTATTG
TCAGTGACAGTACCTACTCGGTGGCATCCCCTTACTCTACAATACCTGCCCTACTACTCCTCCTGC
TCCAGTTCCACTTCTATTCCACGGAGAAAAAATGATTTGTGTACAGAAAGTTTTATGGAACTAGC
ACCATGTCTACAGAACTGAACCATTTGTTGAAAAATAAGCAGCATTCAAGAATGAAGCTGCTGGGTTTG
GAGGTGTCCCACGGCTCTGCTAGTGTCTGCTCTCCTTCTTTGGTGTGCAGCTGGTCTTGGATTTTG
CTATGTCAAAAGGTATGTGAAGGCCTTCCCTTTTACAAACAAGAATCAGCAGAAGGAAATGATCGAAACC
AAAGTAGTAAAGGAGGAGAAGGCCAATGATAGCAACCCTAATGAGGAATCAAAGAAAATGATAAAAACC
CAGAAGAGTCCAAGAGTCCAAGCAAAACTACCGTGGCATGCCTGGAAGCTGAAGTT

ACGCGTACGCGGCCGCTCGAGCAGAAACTCATCTCAGAAGAGGATCTGGCAGCAATGATATCCTGGATT
ACAAGGATGACGACGATAAGGTTTAA



[View online »](#)

Protein Sequence: >RC204609 protein sequence
Red=Cloning site Green=Tags(s)

MARCFSLVLLLSIWTRLLVQGSRAEELSIQVSCRIMGITLVSKKANQQLNFTEAKEACRLGLSLAG
 KDQVETALKASFETCSYGWVGDFVVISRISPNPKCGKNGVGLIRKVPVSRQFAAYCYNSSDTWTNSCI
 PEIITTKDPIFNTQTATQTTEFIVSDSTYSVASPYSTIPAPTTTPPAPASTSIPRRKKLICVTEVFMETS
 TMSTETEPFVENKAAFKNAAAGFGGVPPTALLVLALLFFGAAAGLGCYVKRYVKAFPFTNKNQKEMIEI
 KVVKEEKANDSNPNEESKKTDKNPEESKSPSKTTVRCLAEAV

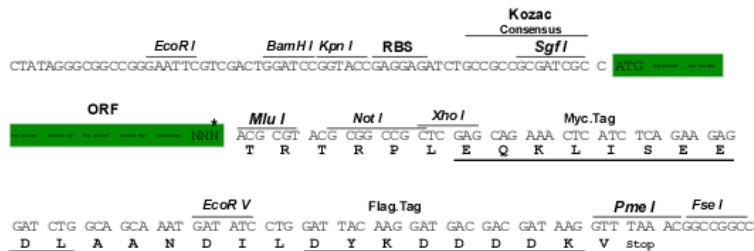
TRTRPLEQKLISEEDLAANDILDYKDDDDKV

Chromatograms: https://cdn.origene.com/chromatograms/mk6171_g09.zip

Restriction Sites: SgfI-MluI

Cloning Scheme:

Cloning sites used for ORF Shuttling:



* The last codon before the Stop codon of the ORF

ACCN: NM_006691

ORF Size: 966 bp

OTI Disclaimer: The molecular sequence of this clone aligns with the gene accession number as a point of reference only. However, individual transcript sequences of the same gene can differ through naturally occurring variations (e.g. polymorphisms), each with its own valid existence. This clone is substantially in agreement with the reference, but a complete review of all prevailing variants is recommended prior to use. [More info](#)

OTI Annotation: This clone was engineered to express the complete ORF with an expression tag. Expression varies depending on the nature of the gene.

Components: The ORF clone is ion-exchange column purified and shipped in a 2D barcoded Matrix tube containing 10ug of transfection-ready, dried plasmid DNA (reconstitute with 100 ul of water).

Reconstitution Method:

1. Centrifuge at 5,000xg for 5min.
2. Carefully open the tube and add 100ul of sterile water to dissolve the DNA.
3. Close the tube and incubate for 10 minutes at room temperature.
4. Briefly vortex the tube and then do a quick spin (less than 5000xg) to concentrate the liquid at the bottom.
5. Store the suspended plasmid at -20°C. The DNA is stable for at least one year from date of shipping when stored at -20°C.

RefSeq: [NM_006691.4](#)

RefSeq Size: 2518 bp

RefSeq ORF: 969 bp

Locus ID: 10894

UniProt ID: [Q9Y5Y7](#)

Cytogenetics: 11p15.4

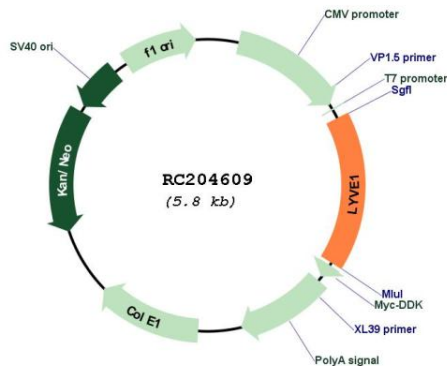
Domains: Xlink

Protein Families: Druggable Genome, Transmembrane

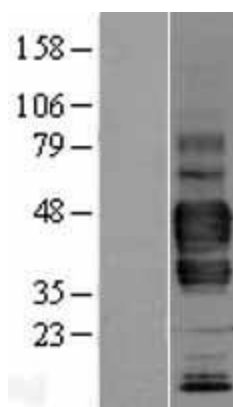
MW: 35.2 kDa

Gene Summary: This gene encodes a type I integral membrane glycoprotein. The encoded protein acts as a receptor and binds to both soluble and immobilized hyaluronan. This protein may function in lymphatic hyaluronan transport and have a role in tumor metastasis. [provided by RefSeq, Jul 2008]

Product images:



Circular map for RC204609



Western blot validation of overexpression lysate (Cat# [LY402008]) using anti-DDK antibody (Cat# [TA50011-100]). Left: Cell lysates from untransfected HEK293T cells; Right: Cell lysates from HEK293T cells transfected with RC204609 using transfection reagent MegaTran 2.0 (Cat# [TT210002]).