

Product datasheet for RC204594

GTDC1 (NM_024659) Human Tagged ORF Clone

Product data:

Product Type:	Expression Plasmids
Product Name:	GTDC1 (NM_024659) Human Tagged ORF Clone
Tag:	Myc-DDK
Symbol:	GTDC1
Synonyms:	Hmat-Xa; mat-Xa
Mammalian Cell Selection:	Neomycin
Vector:	pCMV6-Entry (PS100001)
E. coli Selection:	Kanamycin (25 ug/mL)
ORF Nucleotide Sequence:	>RC204594 ORF sequence Red=Cloning site Blue=ORF Green=Tags(s)

TTTTGTAATACGACTCACTATAGGGCGCCGGGAATTCGTCGACTGGATCCGGTACCGAGGAGATCTGCC
GCC**CGATCGCC**

ATGAGTATCCTCATCATTGAAGCATTCTATGGAGGCTCCCATAAACAGCTGGTGGATCTTCTTCAAGAAG
AGTTAGGAGACTGTGTCGTTTATACCCTCCTGCAAAGAAATGGCATTGGAGAGCCCGGACATCTGCTTT
ATATTTCTCTCAGACCATTCCCATCAGTGAGCATTACAGGACCCTCTTGCAGTTCAGTGCTTAACCTG
ACCGAACTGGCTGCCCTTCGGCCTGACCTTGGGAACTGAAAAAGATTCTGTATTTTACGAGAACCAGT
TGATATATCCTGTCAAGAAATGTCAGGAGAGGGATTTCCAATATGGATACAACCAAAATCTTTCATGCCT
GGTGGCTGATGTGGTTGTATTCAACTCAGTTTTTAAATATGGAATCATTTCTCACTCCATGGGAAAATTT
ATGAAGCTGATTCCTGATCACAGACCCAAGGATCTGGAAAGCATCATCAGACCCAAGTGCCAAGTTATTT
ACTTTCCCATCAGGTTTCTGATGTGAGCAGATTCATGCCAAGCACAAAACAACCCATTTAAAGAAGAT
GCTCGGCCTTAAAGGAAATGGCGGTGCGGTTCTGTCCATGGCCCTTCTTTTTCAGCCAGAGCAGAGAGAT
TCAGAGGATTTATTGAAGAATTTAATTCAGAGTGTGATACACACTGTGGCCTTGATACTGCACGACAAG
AATATTTGGGTAACCTATTAAGACAGGAATCAGACTTGAAAAATCCACCTCGTCAGATAATTCAGCTC
TCATCATGGTGAATAAACAATCTGACTGTGATCCCTGTGACATTTGGGTGGAGTTGATAATCAG
CAAAGACTGCTACACATTGTCTGGCCTCACAGGTGGTTGGAAGCTGTGTACTGTGGGTGTTACCCACTTT
GTCTAAAGATTTGGTTTATCCCGAAATATTTCCAGCTGAATATCTGTATTCTACACCTGAACAGCTTTC
AAAAAGGCTCCAGAATTTCTGCAAGAGACCAGATATTATAAGAAAAACATCTCTATAAGGGTGAAATCGCT
CCGTTTTCTTGGCGAGCCCTACATGGTAAATTCAGGTCTCTGCTTACAACAGAACCTAGGGAAGATTTG

ACGCGTACGCGGCCGCTCGAGCAGAAACTCATCTCAGAAGAGGATCTGGCAGCAATGATATCCTGGATT
ACAAGGATGACGACGATAAGGTTTAA



[View online »](#)

Protein Sequence: >RC204594 protein sequence
Red=Cloning site Green=Tags(s)

MSILIEAFYGGSHKQLVDLLQEELGDCVVYTLPAKKWHWRARTSALYFSQTIPISEHYRTLFASSVLNL
 TELAALRPDLGKLKKILYFHENQLIYPVKKCQERDFQYGYNQILSCLVADVVFNSVFNMESFLTSMGKF
 MKLIPDHRPKDLESIIRPKCQVIYFPIRFPDVSFRFMPKHKHTHLKMKLGLKGNNGAVLSMALPFQPEQRD
 SEDLLKNFNSECDTHCGLDTARQEYLGNSLRQESDLKKSTSSDNSSSHHGENKQNLTVDPDILGGVDNQ
 QRLLHIWPHRWLEAVYCGCYPLCPKDLVYPEIFPAEYLYSTPEQLSKRLQNFCKRPDIIRKHLKGEIA
 PFSWAALHGKFRSLLTTEPREDL

TRTRPLEQKLISEEDLAANDILDYKDDDDKV

Chromatograms: https://cdn.origene.com/chromatograms/mk6344_a05.zip

Restriction Sites: SgfI-MluI

Cloning Scheme:



* The last codon before the Stop codon of the ORF

ACCN: NM_024659

ORF Size: 1119 bp

OTI Disclaimer: The molecular sequence of this clone aligns with the gene accession number as a point of reference only. However, individual transcript sequences of the same gene can differ through naturally occurring variations (e.g. polymorphisms), each with its own valid existence. This clone is substantially in agreement with the reference, but a complete review of all prevailing variants is recommended prior to use. [More info](#)

OTI Annotation: This clone was engineered to express the complete ORF with an expression tag. Expression varies depending on the nature of the gene.

Components: The ORF clone is ion-exchange column purified and shipped in a 2D barcoded Matrix tube containing 10ug of transfection-ready, dried plasmid DNA (reconstitute with 100 ul of water).

- Reconstitution Method:**
1. Centrifuge at 5,000xg for 5min.
 2. Carefully open the tube and add 100ul of sterile water to dissolve the DNA.
 3. Close the tube and incubate for 10 minutes at room temperature.
 4. Briefly vortex the tube and then do a quick spin (less than 5000xg) to concentrate the liquid at the bottom.
 5. Store the suspended plasmid at -20°C. The DNA is stable for at least one year from date of shipping when stored at -20°C.

RefSeq: [NM_024659.6](#)

RefSeq Size: 2419 bp

RefSeq ORF: 1122 bp

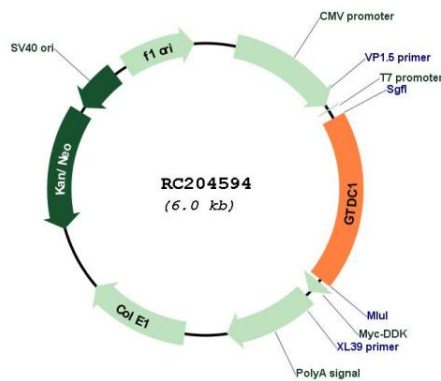
Locus ID: 79712

UniProt ID: [Q4AE62](#)

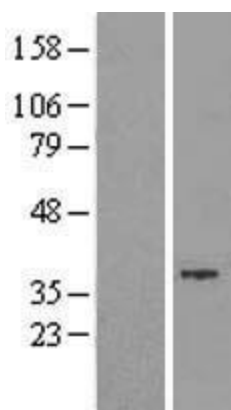
Cytogenetics: 2q22.3

MW: 43 kDa

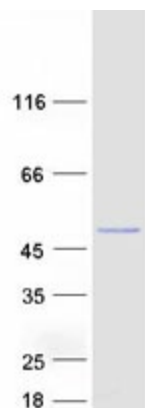
Product images:



Circular map for RC204594



Western blot validation of overexpression lysate (Cat# [LY411175]) using anti-DDK antibody (Cat# [TA50011-100]). Left: Cell lysates from untransfected HEK293T cells; Right: Cell lysates from HEK293T cells transfected with RC204594 using transfection reagent MegaTran 2.0 (Cat# [TT210002]).



Coomassie blue staining of purified GTDC1 protein (Cat# [TP304594]). The protein was produced from HEK293T cells transfected with GTDC1 cDNA clone (Cat# RC204594) using MegaTran 2.0 (Cat# [TT210002]).