

Product datasheet for RC204592

RAB3IL1 (NM_013401) Human Tagged ORF Clone

Product data:

Product Type:	Expression Plasmids
Product Name:	RAB3IL1 (NM_013401) Human Tagged ORF Clone
Tag:	Myc-DDK
Symbol:	RAB3IL1
Synonyms:	GRAB
Mammalian Cell Selection:	Neomycin
Vector:	pCMV6-Entry (PS100001)
E. coli Selection:	Kanamycin (25 ug/mL)
ORF Nucleotide Sequence:	>RC204592 ORF sequence Red=Cloning site Blue=ORF Green=Tags(s)

TTTTGTAATACGACTCACTATAGGGCGGCCGGAATTCGTCGACTGGATCCGGTACCGAGGAGATCTGCC
GCC**CGATCGCC**

ATGTGGAGCGGCCACCCAGCCAGACCAGGGCCTCCCGCCGCCCTTGCAGCTGTCCCGTCCCCTGGA
AGAGCACGGACCCTGCCAAGGCCACAGGGAGTCCCAGGAGCCCTGGTGGAGACCTCTGCAGGGGAGGA
GGCCCAAGGCCAGGAGGGCCCCGACGCCAGCTGGACGTGTTGCGCTGCGCAGCTCTCCATGGAG
ATCCGAGAGAAGGGCTCCGAGTTCCTGAAGGAGGAGCTGCACAGAGCGCAGAAGGAGCTGAAGCTAAAGG
ACGAGGAATGTGAGCGGCTGTCCAAGGTGCGGGAGCAGCTAGAACAGGAGCTGGAAGAGCTGACGGCCAG
CCTGTTTGAGGAAGCTCAACAAGATGGTTGAGAAGCCAACATGAAGCAGGCGGCATCAGAAAAGCAGCTG
AAGGAGGCTCGGGCAAGATCGACATGCTGCAGGCAGAGGTGACAGCCTTGAAGACACTGGTCATCACGT
CCACACCAGCCTCTCCAACCGGAGCTTACCCCCAGCTGCTGAGCCCCACCAAGGCCGGGCCCGAAA
GGGCCACTCTCGCCACAAGAGCACCAGCAGCACCTCTGCCCCCGGTGTGTCCCGCTGCGGGACACACC
CTCACCCAGACAGAGAGGGCAAGGAGGTGGACACAATCCTGTTTGCAGAGTTCAGGCCCTGGAGGGAAT
CCCCACCCTGGACAAGACCTGCCCTTCTGAAAGGGTGTACCGAGAGGACGTGGGCCCTGCCTGGA
GTGGCTTCGCAGACGCTGCCACAGTGAAGGTGGCCGAGGTTGACTGTAGCAGCAACAACATGTGCC
TGAGCGGCTGACCCGACCTGCCGCCACGAATCCGGCTCGGGGACTCCAAAAGCCATTACTACATCTC
GCCATTTCCCGGCCAGGATCACCGCAGTGTGCAACTTCTTACCTACATCCGCTACATCCAGCAAGGC
CTGGTGGCGCAGGACGCAGAGCCATGTTCTGGGAGATCATGAGGTTGCGGAAGGAGATGCTACTGGCCA
AGCTCGGCTTCTCCCCAGGAGCT

ACGGTACGGGCCGCTCGAGCAGAACTCATCTCAGAAGAGGATCTGGCAGCAATGATATCTGGATT
ACAAGGATGACGACGATAAGGTTTAA



[View online >](#)

Protein Sequence: >RC204592 protein sequence
Red=Cloning site Green=Tags(s)

MWSGPPQPDQGLPPPLAAVPVPWKSTDPQCQGHRESPGALVETSAGEEAQGQEGPAAAQLDVLRLRSSME
 IREKGFSEFLKEELHRAQKELKLDKEECERLSKVREQLQLELEELTASLFEEAHKVMREANMKQAASEKQL
 KEARGKIDMLQAEVTALKTLVITSTPASPNNRELHPQLLSPTKAGPRKGRHSRHKSTSSSTLCPAVCPAAGT
 LTPDREGKEVDITLFAEFQAWRESPTLDKTCPFLERVYREDVGPCLDFTMQELSVLVRAAVEDNTLTIEP
 VASQTLPTVKVAEVDCCSSTNTCALSGLTRTCRHRIRLGDGSKSHYYISPSSRARITAVCNFFTYIRYIQQG
 LVRQDAEPMFWEIMRLRKEMSLAKLGFPPQEA

TRTRPLEQKLISEEDLAANDILDYKDDDDKV

Chromatograms: https://cdn.origene.com/chromatograms/mk6324_a06.zip

Restriction Sites: SgfI-MluI

Cloning Scheme:



* The last codon before the Stop codon of the ORF

ACCN: NM_013401

ORF Size: 1146 bp

OTI Disclaimer: The molecular sequence of this clone aligns with the gene accession number as a point of reference only. However, individual transcript sequences of the same gene can differ through naturally occurring variations (e.g. polymorphisms), each with its own valid existence. This clone is substantially in agreement with the reference, but a complete review of all prevailing variants is recommended prior to use. [More info](#)

OTI Annotation: This clone was engineered to express the complete ORF with an expression tag. Expression varies depending on the nature of the gene.

Components: The ORF clone is ion-exchange column purified and shipped in a 2D barcoded Matrix tube containing 10ug of transfection-ready, dried plasmid DNA (reconstitute with 100 ul of water).

Reconstitution Method:

1. Centrifuge at 5,000xg for 5min.
2. Carefully open the tube and add 100ul of sterile water to dissolve the DNA.
3. Close the tube and incubate for 10 minutes at room temperature.
4. Briefly vortex the tube and then do a quick spin (less than 5000xg) to concentrate the liquid at the bottom.
5. Store the suspended plasmid at -20°C. The DNA is stable for at least one year from date of shipping when stored at -20°C.

RefSeq: [NM_013401.2](#), [NP_037533.2](#)

RefSeq Size: 2392 bp

RefSeq ORF: 1149 bp

Locus ID: 5866

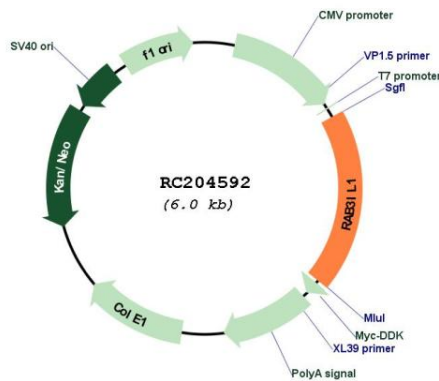
UniProt ID: [Q8TBN0](#)

Cytogenetics: 11q12.2-q12.3

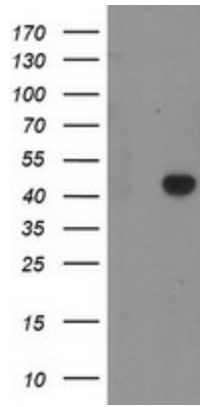
MW: 42.6 kDa

Gene Summary: This gene encodes a guanine nucleotide exchange factor for the ras-related protein Rab3A. The encoded protein binds Rab3a and the inositol hexakisphosphate kinase InsP6K1. Alternative splicing results in multiple transcript variants. A related pseudogene has been identified on chromosome 7. [provided by RefSeq, Nov 2012]

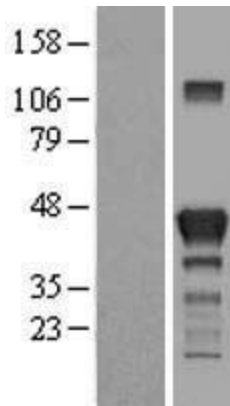
Product images:



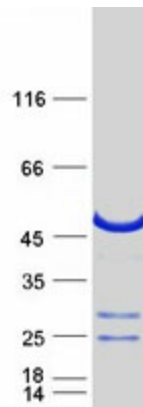
Circular map for RC204592



HEK293T cells were transfected with the pCMV6-ENTRY control (Cat# [PS100001], Left lane) or pCMV6-ENTRY RAB3IL1 (Cat# RC204592, Right lane) cDNA for 48 hrs and lysed. Equivalent amounts of cell lysates (5 ug per lane) were separated by SDS-PAGE and immunoblotted with anti-RAB3IL1 (Cat# [TA504958]). Positive lysates [LY415621] (100ug) and [LC415621] (20ug) can be purchased separately from OriGene.



Western blot validation of overexpression lysate (Cat# [LY415621]) using anti-DDK antibody (Cat# [TA50011-100]). Left: Cell lysates from untransfected HEK293T cells; Right: Cell lysates from HEK293T cells transfected with RC204592 using transfection reagent MegaTran 2.0 (Cat# [TT210002]).



Coomassie blue staining of purified RAB3IL1 protein (Cat# [TP304592]). The protein was produced from HEK293T cells transfected with RAB3IL1 cDNA clone (Cat# RC204592) using MegaTran 2.0 (Cat# [TT210002]).