

Product datasheet for **RC204587**

CLIP3 (NM_015526) Human Tagged ORF Clone

Product data:

Product Type:	Expression Plasmids
Product Name:	CLIP3 (NM_015526) Human Tagged ORF Clone
Tag:	Myc-DDK
Symbol:	CLIP3
Synonyms:	CLIPR-59; CLIPR59; RSNL1
Mammalian Cell Selection:	Neomycin
Vector:	pCMV6-Entry (PS100001)
E. coli Selection:	Kanamycin (25 ug/mL)



[View online »](#)

ORF Nucleotide Sequence:

>RC204587 ORF sequence
 Red=Cloning site Blue=ORF Green=Tags(s)

TTTTGTAATACGACTCACTATAGGGCGGCCGGGAATTCGTCGACTGGATCCGGTACCGAGGAGATCTGCC
 GCC**CGCATCGCC**

ATGACTAAGACAGATCCTGCCCCGATGGCCCCGCCACCCCGAGGAGAGGAGGAAGAAGAGGAGGAGGAGG
 ATGAACCCGTCCCGAGGCCCCAGCCCCACCCAGGAGCGCCGGCAGAAGCCTGTTGTGACCCCTCGGC
 ACCTGCCCCCTCCCTAAGGACTACGCTTTCACCTTCTTCGATCCCAATGACCCGGCGTGCCAGGAGATC
 CTGTTTGACCCTCAGACCACCATCCCCGAGCTGTTTGCCATTGTGCGCCAGTGGGTGCCCAAGTCCAGC
 ACAAGATAGACGTCATCGGCAATGAGATTCTGCGCCGAGGCTGCCATGTGAACGATCGTGACGGGCTGAC
 CGACATGACACTGCTCCACTATGCGTGCAAAGCTGGGGCCACGGAGTCGGGGACCCCGCGGCAGCCGTG
 CGCCTCTCGCAGCAGCTGCTGGCGCTGGGCGCAGATGTGACGCTGCGCAGCCGCTGGACCAACATGAACG
 CGCTTCACTACGCGGCCATTTTGTATGTGCCCGTCTCGTGCGTGTGCTGCTGAAGGGTGCAGGGCCGCG
 AGTGGTGAACCCACGTGACGTGACTTCAACCACGGCTCAGCCCTGCACATCGCTGCTTCCAGCCTGTGC
 CTGGGCGCCGCAAAATGTTTGTGGAGCAGGCGCAACCCTGCGCTGAGGAATCGAAAAGGACAGGTGC
 CGGCGGAGGTGGTCCCAGATCCTATGGACATGTCCCTGGACAAGGCAGAGGCGGCACTGGTGGCCAAAGGA
 GCTGCGGACGCTTCTGGAAGAGGCAAGTCCACTATCTTGCGCCCTCCCCAAGGTCACGCTACCCAATAT
 GACAACGTCCCAGGCAATCTCATGCTTAGCGCACTGGGCTTGCGCCTGGGAGACCGCGTGTGCTGGATG
 GCCAGAAGACGGGCACACTGCGGTTCTGTGGGACCACGGAGTTTGCAGCGGCCAGTGGGTGGGCGTGGA
 GCTGGACGAACCTGAGGGCAAGAACGATGGCAGCGTTGGGGCGTTCCGTTACTTCATCTGCCCTCCCAAG
 CAGGGTCTCTTTGCCCTCCGTGTCCAAGATCTCCAAGCAGTGGACGCACCCCTCTCTGTACCTCCA
 CACCCCGGACCCCGGATGGACTTCTCCCGTGCACCGGCAAAGGCCGACAGGAAACACAAGGCAAGAA
 GAAGACCCCATCATCCCCATCTCTGGGCAGCTTGACAGCAGCGTGACGGGGCCAAGGCTGAGGTTGGAGAC
 CAGGTCTTGTGCGGGCCAGAAGCAGGGGATCGTGCGCTTCTACGGGAAGACAGACTTTGCCCCAGGTT
 ACTGGTATGGCATTGAGCTGGACCAGCCACAGGCAAGCATGATGGCTCTGTCTTCGGTGTCCGGTACTT
 CACTTGCCCCCGAGGCATGGGGTCTTCGACCCAGCATCCCGTATTAGAGGATTGGCGGATCCACTGAT
 TCCCCCGGGACAGCGTTGGAGCCAAAAAGTGCATCAAGTGACAATGACGCAGCCCAACGCACCTTCA
 CCACAGTCCGGACCCAAAGGACATTGCATCAGAGAACTCCATTTCCAGGTTGCTGTTCTGCTGCTGGT
 CCCCTGGATGCTGAGGGCGGAGATGCAGTCT

ACGCGTACGCGGCCGCTCGAGCAGAAACTCATCTCAGAAGAGGATCTGGCAGCAAATGATATCCTGGATT
 ACAAGGATGACGACGATAAGGTTTAA

Protein Sequence:

>RC204587 protein sequence
 Red=Cloning site Green=Tags(s)

MTKTDPAPMAPPPrEEEEEEEEDEPVPEAPSPTQERRQKPVVHPSAPAPLPKDYAFFDFPNDPACQEI
 LFDPQTTIPELFAIVRQWVQVQHKIDVIGNEILRRGCHVNDRDGLTDMTLLHYACKAGAHGVGDPAAAV
 RLSQQLLALGADVTLRSRWTNMNALHYAAYFDVPVLRVLLKGARPRVNSTCSDFNHGSALHIAASSLC
 LGAAKCLLEHGANPALRNRKQVPAEVVDPMDMSLDKAEALVAKELRTLLEEAVPLSCALPKVTLPNY
 DNVPGNMLMLSALGLRLGDRVLLDGQKTGLRFCGTTTEFASQWVGVELDEPEGKNDGSLVGGVRYFICPPK
 QGLFASVSKISKAVDAPPSSVSTPRTPRMDFSRVTGKGRREHKGKKTPSSPSLGSQQRDGAKAEVGD
 QVLVAGQKQGI VRFYGTDFAPGYWYGIELDQPTGKHDGSVFGVRYFTCPPRHGVFAPASRIQRIGGSTD
 SPGDSVGAKKVHVQVTMTQPKRTFTVTRPKDIASENSISRLLFCCWFPWMLRAEMQS

TRTRPLEQKLI SEEDLAANDILDYKDDDDKV

Chromatograms:

https://cdn.origene.com/chromatograms/mk6310_f06.zip

Restriction Sites:

SgfI-MluI

Cloning Scheme:

ACCN: NM_015526

ORF Size: 1641 bp

OTI Disclaimer: The molecular sequence of this clone aligns with the gene accession number as a point of reference only. However, individual transcript sequences of the same gene can differ through naturally occurring variations (e.g. polymorphisms), each with its own valid existence. This clone is substantially in agreement with the reference, but a complete review of all prevailing variants is recommended prior to use. [More info](#)

OTI Annotation: This clone was engineered to express the complete ORF with an expression tag. Expression varies depending on the nature of the gene.

Components: The ORF clone is ion-exchange column purified and shipped in a 2D barcoded Matrix tube containing 10ug of transfection-ready, dried plasmid DNA (reconstitute with 100 ul of water).

Reconstitution Method:

1. Centrifuge at 5,000xg for 5min.
2. Carefully open the tube and add 100ul of sterile water to dissolve the DNA.
3. Close the tube and incubate for 10 minutes at room temperature.
4. Briefly vortex the tube and then do a quick spin (less than 5000xg) to concentrate the liquid at the bottom.
5. Store the suspended plasmid at -20°C. The DNA is stable for at least one year from date of shipping when stored at -20°C.

RefSeq: [NM_015526.3](#)
RefSeq Size: 3389 bp

RefSeq ORF: 1644 bp

Locus ID: 25999

UniProt ID: [Q96DZ5](#)

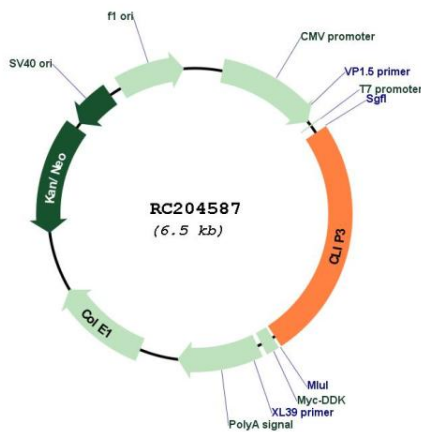
Cytogenetics: 19q13.12

Domains: CAP_GLY, ANK

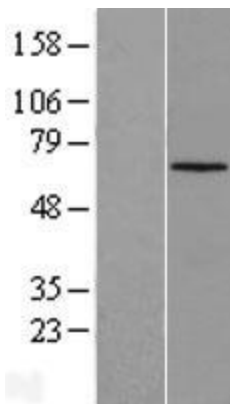
MW: 59.5 kDa

Gene Summary: This gene encodes a member of the cytoplasmic linker protein 170 family. Members of this protein family contain a cytoskeleton-associated protein glycine-rich domain and mediate the interaction of microtubules with cellular organelles. The encoded protein plays a role in T cell apoptosis by facilitating the association of tubulin and the lipid raft ganglioside GD3. The encoded protein also functions as a scaffold protein mediating membrane localization of phosphorylated protein kinase B. Alternatively spliced transcript variants have been observed for this gene. [provided by RefSeq, Dec 2010]

Product images:



Circular map for RC204587



Western blot validation of overexpression lysate (Cat# [LY414496]) using anti-DDK antibody (Cat# [TA50011-100]). Left: Cell lysates from untransfected HEK293T cells; Right: Cell lysates from HEK293T cells transfected with RC204587 using transfection reagent MegaTran 2.0 (Cat# [TT210002]).