

Product datasheet for **RC204570**

PPWD1 (NM_015342) Human Tagged ORF Clone

Product data:

Product Type:	Expression Plasmids
Product Name:	PPWD1 (NM_015342) Human Tagged ORF Clone
Tag:	Myc-DDK
Symbol:	PPWD1
Vector:	pCMV6-Entry (PS100001)
E. coli Selection:	Kanamycin (25 ug/mL)
Cell Selection:	Neomycin



[View online »](#)

ORF Nucleotide
Sequence:

>RC204570 ORF sequence
Red=Cloning site Blue=ORF Green=Tags(s)

TTTTGTAATACGACTCACTATAGGGCGGCCGGGAATTCGTCGACTGGATCCGGTACCGAGGAGATCTGCC
GCCGCGATCGCC

ATGGCGCGGAAAGTGGTAGCGATTTTCAGCAGAGACGTAGAAGCGCCGGGACCCGGAGGAACCGGAAA
AAACAGAACTCAGCGAAAGAGAGCTGGCAGTAGCAGTGGCGGTGCCAGGAGAACGATGAGGAGAACGA
AGAGCGCTGGGTTGGACCTTTACCTGTGGAGGCAACACTGGCCAAGAAGAGGAAAAGTCTTAGAGTTTGAA
AGAGTCTATCTTGATAATCTCCCACTGCATCCATGTATGAGCGCAGTTACATGCATAGAGATGTTATCA
CCCATGTGGTATGCACAAAACAGATTTTATTACTGCCAGTCATGATGGACATGTCAAGTTCTGGAA
AAAAATAGAAGAGGGAATTGAATTTGTTAAACATTTTCGTAGTCACCTGGGAGTTATTGAGAGTATTGCA
GTTAGCTCTGAGGGAGCATTGTTCTGTTCTGTGGGTGATGATAAAGCAATGAAGGTGTTGATGTAGTGA
ACTTTGACATGATCAACATGCTGAAACTTGGCTATTTCTGGACAGTGTGAGTGGATCTATTGCCCAGG
GGATGCAATTTCTCAGTTGCTGCTCCGAAAAGAGTACAGGAAAAATTTTCATTTATGATGGCCGAGGA
GATAACCAGCCACTTCATATTTTGACAACTCCATACATCACCTTACTCAGATACGGCTAAACCCAG
TTTACAAAGCAGTAGTGTCTTGACAAATCTGGGATGATTGAATACTGGACTGGGCTCCTCATGAATA
TAAATCCCAAAAATGTGAACCTGGGAATATAAACTGACACTGATTTATGAATTTGCCAAGTGAAG
GCTTATCCAACAGCGTATGTTTTCCACAGATGGGAAGAAAATAGCTACTATTGGTTCTGATAGAAAAG
TTAGAATTTTCAGATTTGTAACCTGGAAAACCTCATGAGAGTCTTTGATGAATCACTAAGCATGTTTACTGA
ACTGCAACAGATGAGGCAACAGTTACCAGACATGGAATTTGGCCGACGAATGGCTGTAGAACGTGAGTTG
GAGAAGGTTGATGCTGTAAGATTAATTAATATAGTTTTGATGAACTGGACACTTCGTGCTGTATGGAA
CAATGCTGGGCATTAAGTTATAAATGTAGAGACAAACCGGTGTGTGCGGATTTTAGGCAACAAGAAAA
TATTAGAGTGATGCAATTGGCTTTGTTCCAGGGATAGCCAAAAAGCATCGTGCTGCAACTACTATAGAA
ATGAAAGCTTCTGAAAATCCTGTTCTTCAGAAATTTCAAGCTGACCCAACAATAGTCTGTACATCATTCA
AAAAGAATAGATTTTATATGTTTACAAAACGAGAACCAGAAGATACGAAAAGTGCAGATTCTGATCGAGA
TGTTTTAATGAGAAACCTTCTAAAGAAGAAGTCATGGCAGCTACTCAAGCTGAAGGACCTAAACGAGTT
TCGGACAGTGCCATTATCCACACCAGCATGGGAGACATTCACACCAAATTTTCTGTTGAGTGCCCTA
AGACAGTGGAAAACCTTCTGTGTTACAGCAGAAATGGTTATTATAATGGGCATACATTTACCCTATAAT
TAAGGGCTTTATGATTCAGACTGGAGATCCAACAGGACTGTTGATGGGAGGAGAAAGCATATGGGGAGGA
GAATTTGAAGATGAATTTCAATCAACATTACGACATGACAGGCCGTACACACTCAGCATGGCTAACGCGG
GATCAAATACTAATGGATCCCAGTTTTTCATAACGGTAGTACCAACGCCTTGGCTTGATAATAAGCATA
AGTATTTGGACGAGTGACTAAAGGAATGGAAGTTGTACAGAGGATCTCCAACGTCAAAGTCAATCCCAAA
ACAGATAAGCCCTATGAGGATGTCAGCATCATAAATTTACTGTCAAG

ACGCGTACGCGGCCGCTCGAGCAGAACTCATCTCAGAAGAGGATCTGGCAGCAATGATATCCTGGATT
ACAAGGATGACGACGATAAGGTTTAA

Protein Sequence: >RC204570 protein sequence
 Red=Cloning site Green=Tags(s)

MAAESGSDFQRRRRRRDPEEPEKTELSERELAVAVAVSQENDEENEERWVGPLPVEATLAKKRKVLFE
 RYVLDNLPASMYERSYMRDVI THVCTKTD F IITASHDGHVKFWKKIEEGIEFVKHFRSHLGVIESIA
 VSSEGALFCSVGDDKAMKVFDDVNFDMINMLKLGYPGQCEWIYCPGDAISSVAASEKSTGKIFIYDGRG
 DNQPLHIFDKLHTSPLTQIRLNPVYKAVVSSDKSGMIEYWTGPPHEYKFPKKNVWEYKTDLDL YEF AKCK
 AYPTSVCFSPDGKKIATIGSDRKVRI FRFVTGKLMRVFDESLSMFTELQQMRQQLPDMEFGRRMAVEREL
 EKVDVAVRLINIVFDETGHFVLYGTMLGIKVINVETNRCVRILGKQENIRVMQLALFQGI AKKHRAATTIE
 MKASENPVLQNIQADPTIVCTSFKNRFYMFTKREPEDTKSADSDRDVFNEKPSKEEVMAATQAEGPKRV
 SDSAIIHTSMGDIHTKLPVECPKTVENFCVHSRNGYNGHTFHRI IKGFMIQTGDPTGTGMGGESIWGG
 EFEDEFHSTLRHDRPYTLSMANAGSNTNGSQFFITVVPTPWL DNKHTVFGRVTKGMEVVQRI SNVKVNPK
 TDKPYEDVSIINITVK

TRTRPLEQKLI SEEDLAANDILDYKDDDDKV

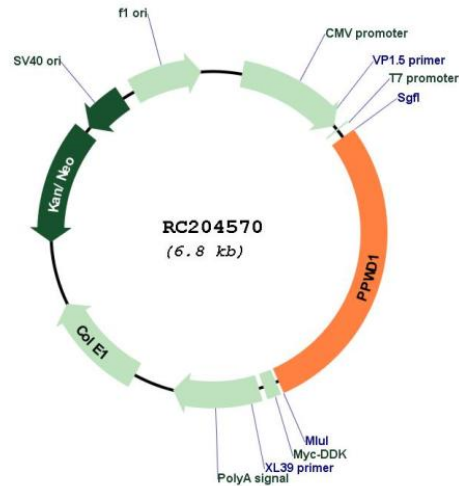
Chromatograms: https://cdn.origene.com/chromatograms/mk6310_c02.zip

Restriction Sites: SgfI-MluI

Cloning Scheme:



Plasmid Map:



ACCN: NM_015342

ORF Size: 1938 bp

OTI Disclaimer: The molecular sequence of this clone aligns with the gene accession number as a point of reference only. However, individual transcript sequences of the same gene can differ through naturally occurring variations (e.g. polymorphisms), each with its own valid existence. This clone is substantially in agreement with the reference, but a complete review of all prevailing variants is recommended prior to use. [More info](#)

OTI Annotation: This clone was engineered to express the complete ORF with an expression tag. Expression varies depending on the nature of the gene.

RefSeq: [NM_015342.1](#), [NP_056157.1](#)

RefSeq Size: 2186 bp

RefSeq ORF: 1941 bp

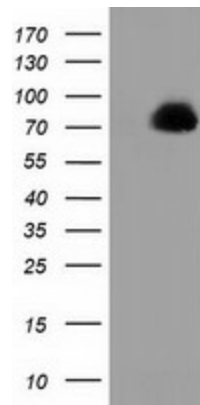
Locus ID: 23398

UniProt ID: [Q96BP3](#), [A0A384MTS1](#)

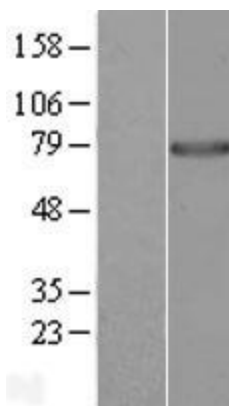
MW: 73.6 kDa

Gene Summary:

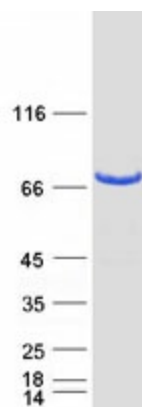
PPase that catalyzes the cis-trans isomerization of proline imidic peptide bonds in oligopeptides and may therefore assist protein folding (PubMed:20676357). May be involved in pre-mRNA splicing (PubMed:11991638).[UniProtKB/Swiss-Prot Function]

Product images:


HEK293T cells were transfected with the pCMV6-ENTRY control (Cat# [PS100001], Left lane) or pCMV6-ENTRY PPWD1 (Cat# RC204570, Right lane) cDNA for 48 hrs and lysed. Equivalent amounts of cell lysates (5 ug per lane) were separated by SDS-PAGE and immunoblotted with anti-PPWD1(Cat# [TA501891]). Positive lysates [LY414604] (100ug) and [LC414604] (20ug) can be purchased separately from OriGene.



Western blot validation of overexpression lysate (Cat# [LY414604]) using anti-DDK antibody (Cat# [TA50011-100]). Left: Cell lysates from untransfected HEK293T cells; Right: Cell lysates from HEK293T cells transfected with RC204570 using transfection reagent MegaTran 2.0 (Cat# [TT210002]).



Coomassie blue staining of purified PPWD1 protein (Cat# [TP304570]). The protein was produced from HEK293T cells transfected with PPWD1 cDNA clone (Cat# RC204570) using MegaTran 2.0 (Cat# [TT210002]).