

Product datasheet for RC204569

HPS3 (NM_032383) Human Tagged ORF Clone

Product data:

Product Type:	Expression Plasmids
Product Name:	HPS3 (NM_032383) Human Tagged ORF Clone
Tag:	Myc-DDK
Symbol:	HPS3
Synonyms:	BLOC2S1; SUTAL
Mammalian Cell Selection:	Neomycin
Vector:	pCMV6-Entry (PS100001)
E. coli Selection:	Kanamycin (25 ug/mL)
ORF Nucleotide Sequence:	>RC204569 ORF sequence Red=Cloning site Blue=ORF Green=Tags(s)

TTTTGTAATACGACTCACTATAGGGCGGCCGGAATTCGTCGACTGGATCCGGTACCGAGGAGATCTGCC
GCC**CGATCGCC**

ATGGTGCAGCTGTACAACCTGCACCCGTTCCGGTTCGCAGCAGGTGGTGCCTGCAAGCTGGAGCCGGACC
GGTTCTGTGGCGGGGGCGTGACGCGTTTTCTGGCGGGCGGCTGCAAGGTGGAGGCGTTCGCGGTGGC
CGGCCAGGAGCTGTGCCAGCCGGTGCCTTCTCCAGCTGGCGGGGTGTCGCTGGCCTACAGC
GAGGCTGGAGATTATTTGGTAGCAATTGAAGAGAAAAACAAAGCTACATTTCTACGTGCTTATGTGAACT
GGAGAAAATAAAGGACTGAAAACCTCTCGTGTGTATCCGAATGATTGGGCATAATGTGGAGGGACCATT
CAGCAAAGCCTTCAGAGACCAGATGTACATTATTGAAATGCCGTTTTCGGAGGCCCTTGTGCATTTC
TGTGGCCTGTGAAAGGAGACCTTCTCGTTGGCTGCACAAATAAATTAGTCTTATTTAGTTTGAAGTACC
AGATCATTAAATGAGGAATTCTCACTATTGGACTTTGAACGTTCTTTAATTATACACATAGATAATATCAC
TCCTGTTGAGGTTTTTTTTGTGTTGGATATGTTGCTGTCATGTCAGACTTAGAAGTCTTAATCGTAAAA
CTGGAGTCAGGCCCTAAAAATGGAGAGAGAGTTACCACCATCCACATAAGACCAACAATCGAATAAGAC
GGACAGAAGAAGGCATCAGTAATGAAATTTACAGCTTGAGTCAGATGATTTTGCATCTGCCAGAAGCC
CCTGGAACCTCTTGGTAAAAAAGTGAACAGCTGGATTATCTGTTACACTGGAGTCTACGGGATTAGCT
GATGAAAAAAGAAAATATCCCACTTTCCAGCACCTGCTCTATAGACGTTTTGCTCCTGATATTTCTGCTCCT
ATGCTTTGTCTGATGACATCAAGCTACATTCCTCCAGCTGCTACCCATTTACCAGACCGGTTCTCTTAC
ATCTGATGAAAAAATTTGTCTCAGAAAAAGAATTGCTGAGTCTCTTTTCTTTTCTCCTTACCTCAT
GTGGGCTATCTCTACATGGTTGTCAAATCTGTTGAATTGATGTCAGTCTACCAGTATCCTGAAAAGTCTC
AGCAGGCAGTACTCACGCCACAATTTTTGCACGTCATTACAAGTAACAACCTGCAGTGTTTCACTGTGCG
GTGCACTGCGCGGCAGCTCGTGAGGAGGACCCGTACATGGACACCCTGAAGGCTTGCCACCTGTC
AGTATGGATGTCTGTGCTTAAAGAATACAGCTTTTCATAGGCTTGAAGCCATCTGTCACTTAAAAACC
ACATCATACTTTTGAATAAGCAGAACCTGAAGCCATTCAGAGAGAAGACAGTACCCAAGAGGCTTCT
TTCAGAAAAAGATACCAGTGTTAAAATCAAATACCTCCTGTAGCTGAGGCTGGGTGGAATTTGTATATT



[View online >](#)

GTGAATACGATCTCACCAGTGCAACTGTACAAAGAGATGGTAGACTATAGCAATACCTATAAGACTGTCA
 AAACCCAGAGCTGCATTACCTTCTCAGTGAGGCTCATCTGTTAGTGCAGCTGCCTGATGGATGCCAG
 TCAGCTGGAACTGGAGAGAAGGCAGAGCTTTTGGAAAGCATTTAAGGAAAGCTGTGGGCACCTTGGGGAC
 TGTTACAGCAGGCTTGACTCCCAGCATTCTCATCTCACCTTGCCATACTATAAGATGTCTGGTTTGTCTA
 TGGCTGAAGTTCTGGCCCGCAGGACTGGACAGTAGAGGATGGATTACAGAAATACGAGAGAGGATTAAT
 CTTTTACATTAATCATTCACTTTATGAAAACCTGGATGAAGAATTAATGAAGAATTAGCAGCAAAAAGTG
 GTTCAGATGTTTTATGTGGCTGAGCCAAAGCAAGTGCCCATATTTCTGTAGTCCTTCTATGAAGAATA
 TTAATCCTTTAACTGCCATGAGCTATCTAAGGAAGCTGGATACTTCTGGGTTTTATCGATCTTAGTGAC
 ATTGACCAAGGCAGCAGTGGCTCTGAAAATGGGAGATCTTGACATGCACAGAAATGAAATGAAAAGCCAT
 TCAGAGATGAAGTTGGTATGTGGCTTATTCTGGAACCTCGGCTGTTGATTCAACAGAGAAAAGGACAGA
 TTGTTCCAACCGAGCTTGCACTTCACTTGAAGGAACTCAGCCTGGATTGCTTGTGGCTTCACTTCTGGG
 CTTGCAGAAGAACAACAAAATTGGAATTGAAGAAGCAGATTCTTTTTTAAAGTGCTTTGTGCTAAGGAT
 GAAGATACAATTCCTCAGCTCTTGGTAGACTTTTGGGAAGCTCAGCTAGTGGCATGTCTCCAGATGTGG
 TACTTCAGGAACCTTTTTCAAACCTCACATCACAGTACATCTGGAGATTGTCTAAGAGGCAGCCTCTGA
 CACCACACCATTGCGAACATCGGAGGATCTGATAAATGCCTGTAGTCATTATGGCTTAATTTATCCATGG
 GTTCACGTCGTAATATCATCTGATTCTTTAGCTGATAAAAATTATACAGAAGATCTTTCAAATACAGT
 CTCTTATATGTGGTCTTCAATTTGACATAGCTTCCATTATTCCGTTCTTGAGGCCACTTTTCAAGACAC
 TATTGCCGGCCTCAGTGTCCATGTTCTGTGTCTACACGCTTGAAGAGTATGAACAGTGCATAGACATA
 CTGTTAGAGAGATGCCCGGAGGCAGTCACTTCCATATGCTAATCATGAACTGAAAGAAGAGAACCGGACTC
 TGTGGTGGAAAAAAGTGTGCTGAACTTTGTGAGAGAATAAAAATGTGGTGGAGAGAAGTATCAACTCTA
 CCTGTATCATTAAAAGAAACATTGTCAATTGTTGCTGTGGAAGTGAAGTGAAGGATTTTCAATGATGTT
 CTCCCAGAAGATGGTACTGCAACATTTTTCTTCCATATCTTCTATTGCAGTCGAAAGAAACCATTGA
 CT

ACGCGTACGCGGCCGCTCGAGCAGAACTCATCTCAGAAGAGGATCTGGCAGCAAATGATATCCTGGATT
 ACAAGGATGACGACGATAAGGTTTAA

Protein Sequence:

>RC204569 protein sequence
 Red=Cloning site Green=Tags(s)

MVQLYNLHPFGSQVVPCKLEPDRFCGGGRDALFVAAGCKVEAFVAVAGQELCQPRCAFSTLGRVLRRLAYS
 EAGDYLVAIEEKNKATFLRAYVNWNRNKRTEENSRVICRMIHGNVEGPFKAFRDQMYIIEEMPLSEAPLCIS
 CCPVKGDLLVGCTNKLVLFLSKYQIINEEFSLDFERSLIIHIDNITPVEVSFCVGVYVAVMSDLEVLIVK
 LESGPKNGERVHHHPKTNRRIRTEEGISNEISQLESDDFVICQKPLELLGEKSEQSGLSVTLESTGLA
 DEKRKYSHFQHLLYRRFAPDISSVYVLSDDIKLHSLQLLPIYQTGSLTSDGKNLSQEKELLSLFCFFSLPH
 VGLYMVVKSVELMSVYQYPEKSQQAVLTPQFLHVITSNNLQCFVTRCSAAAAREEDPYMDTTLKACPPV
 SMDVICALRIQLF IGLKAICHFNHIIILLTAEPEAIPERRQSPKRLLSRKDTSVKIKIPPVAEAGWNLYI
 VNTISPVQLYKEMVDYSNTYKTKVKTQSCIHLLSEHLLVRAALMDASQLEPGEKELLEAFKESCGHLGD
 CYSRLDSQHSHTLPYYKMSGLSMAEVLARTDWTVEDGLQKYERGLIFYINHSLYENLDEELNEELAAKV
 VQMFYVAEPKQVPHILCSPSMKNINPLTAMSYLRKLDTSGFSSILVTLTKAAVALKMGDLDMHRNEMKSH
 SEMKLVCGFIEPRLLIQQRKGQIVPTLALHLKETQPGLLVASVGLQKNNKIGIEEADSFVKVCAKD
 EDTIPQLLVDFWEAQLVACLPDVVLQELFFKLTQYIWRLSKRQPPDTPLRSEDLINACSHYGLIYPW
 VHVVISSDSLADKNYTEDLSKLQSLICGPSFDIASIIPFLEPLSEDTIAGLSVHVLCRTRLKEYEQCIDI
 LLERCPEAVIPYANHELKEENRTLWKKLLPELCQRIKCGGEKYQLYLSLKETLSIVAVELELKDFMNV
 LPEDGTATFFLPYLLYCSRKKPLT

TRTRPLEQKLISEEDLAANDILDYKDDDDKV

Chromatograms:

https://cdn.origene.com/chromatograms/mk6141_f02.zip

Restriction Sites:

Sgfl-Mlul

Cloning Scheme:


ACCN: NM_032383

ORF Size: 3012 bp

OTI Disclaimer: The molecular sequence of this clone aligns with the gene accession number as a point of reference only. However, individual transcript sequences of the same gene can differ through naturally occurring variations (e.g. polymorphisms), each with its own valid existence. This clone is substantially in agreement with the reference, but a complete review of all prevailing variants is recommended prior to use. [More info](#)

OTI Annotation: This clone was engineered to express the complete ORF with an expression tag. Expression varies depending on the nature of the gene.

Components: The ORF clone is ion-exchange column purified and shipped in a 2D barcoded Matrix tube containing 10ug of transfection-ready, dried plasmid DNA (reconstitute with 100 ul of water).

- Reconstitution Method:**
1. Centrifuge at 5,000xg for 5min.
 2. Carefully open the tube and add 100ul of sterile water to dissolve the DNA.
 3. Close the tube and incubate for 10 minutes at room temperature.
 4. Briefly vortex the tube and then do a quick spin (less than 5000xg) to concentrate the liquid at the bottom.
 5. Store the suspended plasmid at -20°C. The DNA is stable for at least one year from date of shipping when stored at -20°C.

RefSeq: [NM_032383.5](#)

RefSeq Size: 4451 bp

RefSeq ORF: 3015 bp

Locus ID: 84343

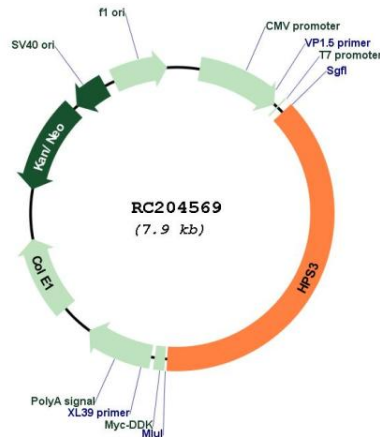
UniProt ID: [Q969F9](#)

Cytogenetics: 3q24

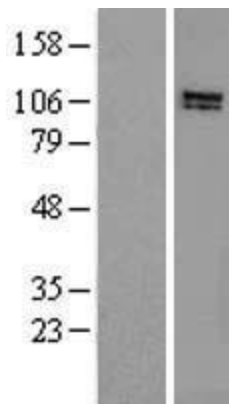
MW: 113.7 kDa

Gene Summary: This gene encodes a protein containing a potential clathrin-binding motif, consensus dileucine signals, and tyrosine-based sorting signals for targeting to vesicles of lysosomal lineage. The encoded protein may play a role in organelle biogenesis associated with melanosomes, platelet dense granules, and lysosomes. Mutations in this gene are associated with Hermansky-Pudlak syndrome type 3. [provided by RefSeq, Apr 2015]

Product images:



Circular map for RC204569



Western blot validation of overexpression lysate (Cat# [LY403159]) using anti-DDK antibody (Cat# [TA50011-100]). Left: Cell lysates from untransfected HEK293T cells; Right: Cell lysates from HEK293T cells transfected with RC204569 using transfection reagent MegaTran 2.0 (Cat# [TT210002]).