

Product datasheet for **RC204564**

RPUSD2 (NM_152260) Human Tagged ORF Clone

Product data:

Product Type:	Expression Plasmids
Product Name:	RPUSD2 (NM_152260) Human Tagged ORF Clone
Tag:	Myc-DDK
Symbol:	RPUSD2
Synonyms:	C15orf19; C18B11; PUS9
Mammalian Cell Selection:	Neomycin
Vector:	pCMV6-Entry (PS100001)
E. coli Selection:	Kanamycin (25 ug/mL)



[View online »](#)

ORF Nucleotide Sequence:

>RC204564 ORF sequence
 Red=Cloning site Blue=ORF Green=Tags(s)

TTTTGTAATACGACTCACTATAGGGCGGCCGGAATTCGTCGACTGGATCCGGTACCGAGGAGATCTGCC
 GCC**CGGATCGCC**

ATGTGGCTGGACCGCCGGATGGCTCAGGGTTCTTGACATTGGCGCTACGACCTAGGCGCCCTAGCT
 TTACCAGACTTGGAGTGGCGATAAGGGCCAATGGCAGAAACAGTGTCTACCCAGGTTGGGACAGAGGG
 CGGGCTGAGGGCTTCGCATCAGCAAAACGGTGACGCTGGTGGCGACGCGAAGGTTGAGCTGTCCCCGGG
 CCCCCGAAGCCGGCTGGCCGGGAAGTGGAGCCGGCCCCAGTAGGCGGGGAGCATCCCTCGGCTGCAGCCC
 CAGGCCCGGGCAAGCATAAGAAGCGGGGGCGCAACCAGGGAGCGTGTCTGCCCCCCGAAGAAGCG
 GCGGACCGGGGTGAGCTTCGGAGATGAGCACTTTCAGAAACAGTTATTACTTCGAGGGCGGCCTGCGT
 AAGGTGCGGCCCTATTACTTTGACTTCCGGACCTACTGCAAAGGTCGCTGGTGGCCACAGCTTGTCTG
 ACGTCTTCAGTACCGAGTCCGAGCTCAGCCCCGGCCTACTATGAGGCCGGTCCGGGCGGGCCGCT
 GCAACTCAACGAGAAGCCGGTGCAGGACCTCAACATCGTCTCAAGACAATGATTTCTTCCGGAACACA
 GTGCACAGGCATGAGCCACCAGTCACAGCAGAGCCCATTGCTGCTAGCTGAGAACGAAGATGTGGTGG
 TTGTAGACAAGCCTTCCATTCCTCCATTCCCGTTCACCCCTGTGGCCGCTCCGACACAACACAGTTATCTCAT
 CCTAGGCAAGGAGCACCAACTCAAGGAGCTACACCCCTTGCATCGGCTTGACCGCCTTACCTCAGGGGTG
 CTTATGTTTCCAAAGACAGCTGCAGTCTCTGAGAGAATTCACGAGCAGGTTCCGGACCGGACGCTGGAGA
 AGGAGTACGTGTGCCGGTGAAGGGGAGTTCCCCTGAGGAAGTGACCTGTAAGAACCATCTTAGT
 GGTGTCTTACAAAGTAGGGGTGTCCGTGTAGATCCCCGGGGCAAGCCCTGTGAGACAGTGTCCAGAGG
 CTAAGCTACAATGGCCAGTCCAGTGTGGTACGGTGCAGGCGCCACTCACAGGCCACACACCAGATTCCGAG
 TCCACCTCAGTCTTTGGCCATCCCATTCTCAACGACCCCATCTACAACCTCAGTTGCCTGGGGTCTTTC
 TCGAGGCCGGGGCGGCTACATTCCAAGACAAACGAGGAGTTGCTACGGGACCTGGTAGCAGAGCACCCAG
 GCCAAACAGAGCCTGGATGTGCTAGATCTCTGTGAGGGTGACCTGTCCCAGGACTCACAGACTCTACGG
 CCCCCTCCTCAGAGTTGGGAAGGACGACCTGGAAGAGTTGGTGCAGCTGCCAGAAGATGGAGGAAGT
 AGCTGAGGCAGCCCCTCAGGAGTTGGACACAATAGCCTTGGCATCAGAGAAGGCAGTTGAAACAGATGTC
 ATGAATCAAGAGACAGACCCACTCTGTGCAGAGTGCCGGTGGTGCAGCAGGATCCCTTGCCCCAAGACC
 TTGTGATGTTCTACATGCCCTACGCTATAAAGGGCCAGGCTTTGAGTACTTTTACCAATGCCTGCCTG
 GGCACAGGATGACTGGCAAAAGGAC

ACGCGTACGCGGCCGCTCGAGCAGAAACTCATCTCAGAAGAGGATCTGGCAGCAAATGATATCCTGGATT
 ACAAGGATGACGACGATAAGGTTTAA

Protein Sequence:

>RC204564 protein sequence
 Red=Cloning site Green=Tags(s)

MWLDRRGWLRVLLGHWRDRLRRPFRTRTWSGDKGPMETVSTQVGTGGLRASHQQNGDAGGDAKVELSPG
 PPKPAGREVPEPAPVGGGEHPSAAAPGPGKHKRRGATRERVVPPPKRRTGVSGDEHFAETSYYFEGGLR
 KVRPYYDFRITYCKGRWVGHSLHVFSTEFRAQLAYYEAAVRAGRLQLNEKPVQDLNIVLKDNDLRLNT
 VHRHEPPVTAEPIRLLAENEDVVVDKPSIPVHPCGRFRHNTVIFILGKEHQLKELHPLHRLDRLTSGV
 LMFAKTAAVSEIRIHEQVRDRQLEKEYVCRVEGEFPTTEVTCKEPILVVSYKVGVCVDPGRKPCETVQFQ
 LSYNGQSSVVRCPRLTGRTHQIRVHLQFLGHPILNDPIYNSVAWGSPSRGRGGYIPKTNEELLRDLVAEHQ
 AKQSLDVLDLCEGDLSPGLTDSTAPSELGKDDLEELAAAAQKMEEVAEAPQELDTIALASEKAVETDV
 MNQETDPLCAECRLVRQDPLPQDLVMFLHALRYKGPGEYFSPMPAWAQDDWQKD

TRTRPLEQKLISEEDLAANDILDYKDDDDKV

Chromatograms:

https://cdn.origene.com/chromatograms/mk6522_f06.zip

Restriction Sites:

SgfI-MluI

Cloning Scheme:


ACCN: NM_152260

ORF Size: 1635 bp

OTI Disclaimer: The molecular sequence of this clone aligns with the gene accession number as a point of reference only. However, individual transcript sequences of the same gene can differ through naturally occurring variations (e.g. polymorphisms), each with its own valid existence. This clone is substantially in agreement with the reference, but a complete review of all prevailing variants is recommended prior to use. [More info](#)

OTI Annotation: This clone was engineered to express the complete ORF with an expression tag. Expression varies depending on the nature of the gene.

Components: The ORF clone is ion-exchange column purified and shipped in a 2D barcoded Matrix tube containing 10ug of transfection-ready, dried plasmid DNA (reconstitute with 100 ul of water).

- Reconstitution Method:**
1. Centrifuge at 5,000xg for 5min.
 2. Carefully open the tube and add 100ul of sterile water to dissolve the DNA.
 3. Close the tube and incubate for 10 minutes at room temperature.
 4. Briefly vortex the tube and then do a quick spin (less than 5000xg) to concentrate the liquid at the bottom.
 5. Store the suspended plasmid at -20°C. The DNA is stable for at least one year from date of shipping when stored at -20°C.

Note: Plasmids are not sterile. For experiments where strict sterility is required, filtration with 0.22um filter is required.

RefSeq: [NM_152260.3](#)

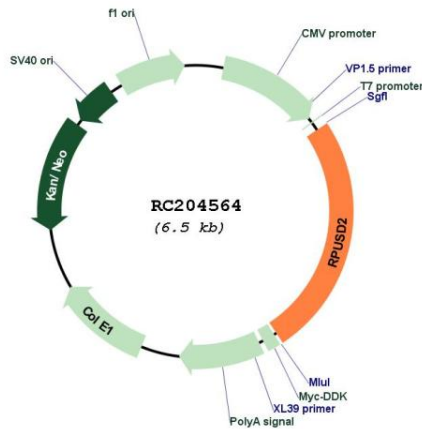
RefSeq Size: 2128 bp

RefSeq ORF: 1638 bp

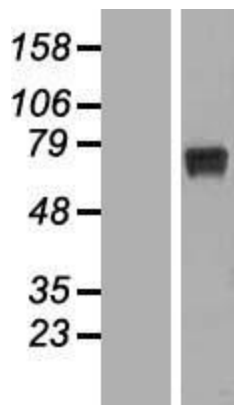
Locus ID: 27079

UniProt ID: [Q8IZ73](#)
 Cytogenetics: 15q15.1
 MW: 61.3 kDa

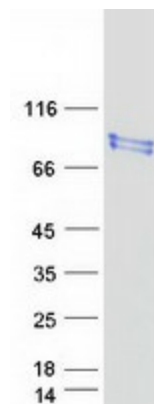
Product images:



Circular map for RC204564



Western blot validation of overexpression lysate (Cat# [LY407683]) using anti-DDK antibody (Cat# [TA50011-100]). Left: Cell lysates from untransfected HEK293T cells; Right: Cell lysates from HEK293T cells transfected with RC204564 using transfection reagent MegaTran 2.0 (Cat# [TT210002]).



Coomassie blue staining of purified RPUSD2 protein (Cat# [TP304564]). The protein was produced from HEK293T cells transfected with RPUSD2 cDNA clone (Cat# RC204564) using MegaTran 2.0 (Cat# [TT210002]).