

## Product datasheet for **RC204563**

### **CAB39 (NM\_016289) Human Tagged ORF Clone**

#### Product data:

Product Type:	Expression Plasmids
Product Name:	CAB39 (NM_016289) Human Tagged ORF Clone
Tag:	Myc-DDK
Symbol:	CAB39
Synonyms:	CGI-66; MO25
Mammalian Cell Selection:	Neomycin
Vector:	pCMV6-Entry (PS100001)
E. coli Selection:	Kanamycin (25 ug/mL)
ORF Nucleotide Sequence:	>RC204563 ORF sequence Red=Cloning site Blue=ORF Green=Tags(s)

TTTTGTAATACGACTCACTATAGGGCGGCCGGAATTCGTCGACTGGATCCGGTACCGAGGAGATCTGCC  
GCC**CGATCGCC**

ATGCCGTTCCCGTTTGGGAAGTCTCACAATCTCCAGCAGACATTGTGAAGAATCTGAAGGAGAGCATGG  
CTGTTCTGAAAAGCAAGACATTTCTGATAAAAAAGCAGAAAAGGCTACAGAAGAAGTTTCCAAAAATCT  
GGTTGCCATGAAAGAAATTTCTGTATGGCACAAATGAAAAAGGCCTCAGACAGAAGCAGTAGCTCAACT  
GCTCAAGAACTCTATAATAGTGGCTCCTTAGCACCTGGTAGCTGATTTACAGCTCATTGACTTTGAGG  
GCAAAAAAGACGTGGCTCAAATTTCAACAATATTCTCAGAAGACAAATGGTACGAGAATCCTACTGT  
TGAATACATCTGCACCCAACAGAATATTTGTTCATGTTATTGAAAGGGTATGAATCTCCAGAAATAGCT  
CTAAATTTGTGGAATAATGTTAAGAGAATGCATCAGACATGAACCACTTGCAAAAATCATTTTGTGGTCGG  
AACAGTTTTATGATTTCTTCAGATATGTCGAAATGTCAACATTTGACATAGCTTCAGATGCATTTGCCAC  
ATTCAGGATTTACTTACAAGACATAAATTGCTCAGTGCAGAATTTTGGAACAGCATTATGATAGATTT  
TTCAGTGAATATGAGAAGTTACTTCATTCAGAAAATTATGTGACAAAAAGACAGTCACTGAAGCTTCTCG  
GTGAACACTACTAGATAGACACAATTCACAATTATGACAAAATACATCAGTAAACCTGAGAACCTCAA  
ATTAATGATGAACCTGCTGCGAGACAAAAGTCGCAACATCCAGTTTGAGGCCTTTACGTTTTTAAGGTG  
TTTGTAGCCAATCCTAACAGACGACGCCATCCTAGACATCCTCCTCAAGAACCAGGCCAAACTCATAG  
AGTTCTCAGCAAGTTTCAGAACGACAGGACGGAGGATGAGCAGTTTAAACGACGAGAAGACCTATTTAGT  
TAAACAGATCAGGGATTTGAAGAGACCAGCTCAGCAAGAAGCT

**ACGCGT**ACGCGGCCGCTCGAGCAGAACTCATCTCAGAAGAGGATCTGGCAGCAAATGATATCCTGGATT  
ACAAGGATGACGACGATAAGGTTTAA



[View online »](#)

**Protein Sequence:** >RC204563 protein sequence  
Red=Cloning site Green=Tags(s)

MPFPFGKSHKSPADIVKNLKESMAVLEKQDISDKKAEKATEEVSKNLVAMKEILYGTNEKEPQTEAVAQL  
 AQELYNSGLLSTLVADLQLIDFEGKKDVAQIFNNILRRQIGTRTPTVEYICTQQNILFMLLKGYESPEIA  
 LNCGIMLRECI RHEPLAKIILWSEQFYDFFRYVEMSTFDIASDAFATFKDLLTRHKLLSAEFLEQHYDRF  
 FSEYEKLLHSENYVTKRQSLKLLGELLDRHNFITMTKYISKPENLKLMMNLLRDKSRNIQFEAFHVFKV  
 FVANPNKTQPIILDILLKNQAKLIEFLSKFQNDRTDEQFNDEKTYLVKQIRD LKRPAQQEA

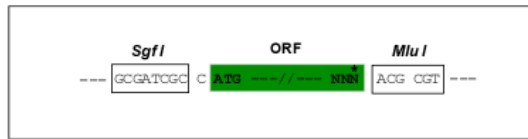
TRTRPLEQKLISEEDLAANDILDYKDDDDKV

**Chromatograms:** [https://cdn.origene.com/chromatograms/mk6196\\_e07.zip](https://cdn.origene.com/chromatograms/mk6196_e07.zip)

**Restriction Sites:** SgfI-MluI

**Cloning Scheme:**

Cloning sites used for ORF Shuttling:



\* The last codon before the Stop codon of the ORF

**ACCN:** NM\_016289

**ORF Size:** 1023 bp

**OTI Disclaimer:** The molecular sequence of this clone aligns with the gene accession number as a point of reference only. However, individual transcript sequences of the same gene can differ through naturally occurring variations (e.g. polymorphisms), each with its own valid existence. This clone is substantially in agreement with the reference, but a complete review of all prevailing variants is recommended prior to use. [More info](#)

**OTI Annotation:** This clone was engineered to express the complete ORF with an expression tag. Expression varies depending on the nature of the gene.

**Components:** The ORF clone is ion-exchange column purified and shipped in a 2D barcoded Matrix tube containing 10ug of transfection-ready, dried plasmid DNA (reconstitute with 100 ul of water).

**Reconstitution Method:**

1. Centrifuge at 5,000xg for 5min.
2. Carefully open the tube and add 100ul of sterile water to dissolve the DNA.
3. Close the tube and incubate for 10 minutes at room temperature.
4. Briefly vortex the tube and then do a quick spin (less than 5000xg) to concentrate the liquid at the bottom.
5. Store the suspended plasmid at -20°C. The DNA is stable for at least one year from date of shipping when stored at -20°C.

**RefSeq:** [NM\\_016289.4](#)

**RefSeq Size:** 3846 bp

**RefSeq ORF:** 1026 bp

**Locus ID:** 51719

**UniProt ID:** [Q9Y376](#)

**Cytogenetics:** 2q37.1

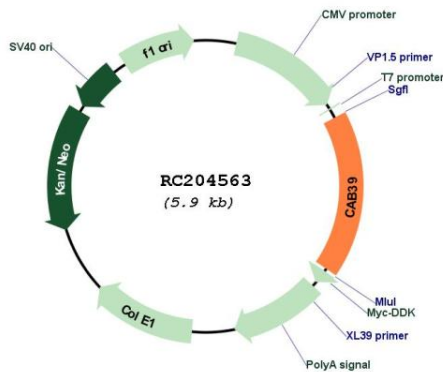
**Domains:** Mo25

**Protein Pathways:** mTOR signaling pathway

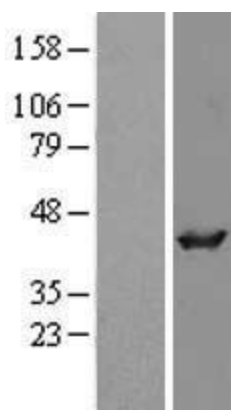
**MW:** 39.9 kDa

**Gene Summary:** Component of a complex that binds and activates STK11/LKB1. In the complex, required to stabilize the interaction between CAB39/MO25 (CAB39/MO25alpha or CAB39L/MO25beta) and STK11/LKB1.[UniProtKB/Swiss-Prot Function]

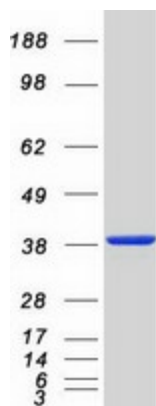
### Product images:



Circular map for RC204563



Western blot validation of overexpression lysate (Cat# [LY427287]) using anti-DDK antibody (Cat# [TA50011-100]). Left: Cell lysates from untransfected HEK293T cells; Right: Cell lysates from HEK293T cells transfected with [RC225505] using transfection reagent MegaTran 2.0 (Cat# [TT210002]).



Coomassie blue staining of purified CAB39 protein (Cat# [TP304563]). The protein was produced from HEK293T cells transfected with CAB39 cDNA clone (Cat# RC204563) using MegaTran 2.0 (Cat# [TT210002]).