

Product datasheet for **RC204562**

ZBTB22 (NM_005453) Human Tagged ORF Clone

Product data:

Product Type:	Expression Plasmids
Product Name:	ZBTB22 (NM_005453) Human Tagged ORF Clone
Tag:	Myc-DDK
Symbol:	ZBTB22
Synonyms:	BING1; fru; fruitless; ZBTB22A; ZNF297; ZNF297A
Mammalian Cell Selection:	Neomycin
Vector:	pCMV6-Entry (PS100001)
E. coli Selection:	Kanamycin (25 ug/mL)



[View online »](#)

ORF Nucleotide Sequence:

>RC204562 ORF sequence
 Red=Cloning site Blue=ORF Green=Tags(s)

TTTTGTAATACGACTCACTATAGGGCGGCCGGAATTCGTCGACTGGATCCGGTACCGAGGAGATCTGCC
 GCC**GCGATCGCC**

ATGGAGCCATCTCCTCTGTCTCCAGTGGGGCAGCACTTCCCCTGCCGCTGTCGCTGGCTCCGCCCCAC
 TACCCCTGCCAGCAGCTGCAGTGGTACATGTGTCTTCCCTGAGGTGACCAGTGCCCTCTTGAGTCCCT
 CAATCAGCAGCGTCTGCAGGGCCAGCTCTGCGATGTATCTATCAGAGTGCAGGGCCGGGAGTTCCGGGT
 CATCGGGCTGTCTGGCTGCCTCTCCCTTACTTCCATGATCAGGTCTACTCAAAGGCATGACCTCCA
 TCTCGTGTCCAGTGTATGGACCCAGGCGCCTTTGAGACTGTCTAGCCTCCGTTACTGCGCCCT
 CAGCATGGCTGCTGTGACATTGTCAACTTCTTACAGTGGGTCTGTGCTCCAAATGTGGCACATTGTG
 GACAAGTGCAGTAACTACTCCGAGAAGGCCGGGCTCAGCTACCACCACCATCACTACTGCTGCAGCCA
 CCTCTGCTACTGTCCCTGGTGTGGGGTCCATCCGGGAGTGGGGCACTGTGGCCCTGTACCATGGG
 CTCTGCGCGCTCCATGCCTCCAGCCGGCCAGTGAAGAATCAATCTCCAGCAGCAGCAACTACTTCAGC
 CCCAGGGAGTCCACTGATTTCTCATCTTCTCCCAAGAGGCATTTGCAGCTTCTGCAAGTGGGAGTGGGG
 AGCGTCGAGGAGGTGGCCCTGTATCCAGCCCTGTCTGGCAGTGGAGGGGCCACATCTGAAAGCT
 GCTGCTGGAGGCAGATGAGCTGTGCGATGATGGTGGGGATGGGAGGGGGCAGTGGTTCTGGGGCTGGG
 CTCCGGAGACCCACCTACACACCCCTAGCATCATGCCACAGAAACACTGGGTATACGTGAAGCGAGGTG
 GTAATTGCCAGCGCCAGCACCCCTGGTCCCCAAGACCCAGATCTGGAGGAGGAAGAGGAGGAGGAAGA
 TCTGGTGTGACCTGTGAGGATGATGAAGATGAAGAACTAGGGGTAGCTCCAGGTTCCAGTGGGGGA
 GGGCTGAGGCTACCCTCAGCATAAGTGTGTCCTACCCTGAGTGAAGCCAGACAAGGGGGAGGAGC
 AGGTCAACTTCTGTGAGTCTCCAATGACTTTGGCCATATGAGGGTGGGGTCTGTGGCAGTCTTGA
 TGAATCAGGGGGCCAACTCCCTTCTTCTATGCCCCCTCCACCCCTCCTGACCGCTCCTCCCTTGGAC
 ATGCAGGGCAACCAGATCCTGGTCTTCCGTCGTCGTTCTCATCTCATCCTCACAGGCTCCTGGCCAAC
 CACCAGGGAACCAAGCAGAACACGGGGCAGTGACCGTGGGGGGCACGTCGGTGGGAGCCTGGGTGTGCC
 GGGTAGCGTTGGTGGGGTCCCTGGAGGGACTGGCAGTGGGGACGGGAATAAGATCTTCTGTGCCATTGT
 GGGAAAGCCTTCTCCACAAGAGCATGCGGGACCGGCACGTGAACATGCACCTCAATCTGCGGCCGTTTG
 ACTGCCCCGTGTGCAACAAAAGTTCAAGATGAAGCACCATCTGACTGAGCAGATGAAGACGCACACAGG
 TCTCAAGCCCTACGAGTGCAGGAGTCTGCGCCAAGAAGTTCATGTGGCGAGACAGTTCATGCGCCACCGA
 GGACTGTGAGCGCCGGCACCCCTGGGCGGGTGGGGCCGTACCTGGGCTGGGACTCCACGGGGC
 CATCCTTGCCGTCCAAGAGAGAGTCTCCCGGAGTGGGCGGGGGCAGCGGGCAGCAAGCGAGTGGCGCCAC
 GCCCCCGTCCAGCAGACGTGTCTGGTCCCACCCAGAGTCCACAAGTGGAGATGGGCTTCGGTGGAGGT
 GGAGGAGCAAAC

ACGCGTACGCGGGCCGCTCGAGCAGAAACTCATCTCAGAAGAGGATCTGGCAGCAAATGATATCCTGGATT
 ACAAGGATGACGACGATAAGGTTTAA

Protein Sequence: >RC204562 protein sequence
 Red=Cloning site Green=Tags(s)

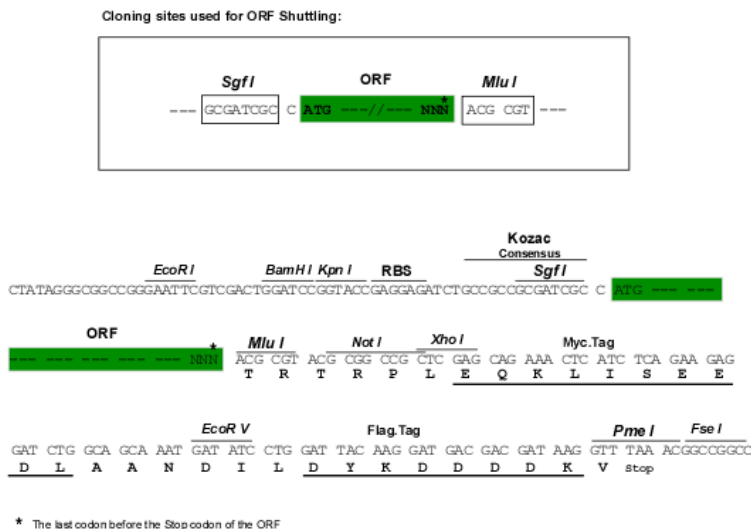
MEPSPLSPSGAALPLPLSLAPPPLPLPAAAVVHVSFPEVTSALLESLNQRLQGQLCDVSIIRVQGREFRA
 HRAVLAASSPYFHDQVLLKGMTSISLPSVMDPGAFETVLASAYTGRLSMAAADIVNFLTVGSLQMWIIV
 DKCTELLREGRASATTTITTTAAATSVTVPGAGVPSGSGGTVPATMGARSASSRAENQSPSSSNYFS
 PRESTDFSSSSQEAFSAASAVGSGERRGGPVFPAPVVGSGGATSGKLLLEADEL CDDGGDGRGAVVPGAG
 LRRPTYTPPSIMPQKHWVYVKRGNCPPAPLVPQDPLEEEEEEDLVLTCEDEDEELGGSSRPVGG
 GPEATLSISDVRTLSEPPDKGEEQVNFCESSNDFGPYEGGGPVAGLDDSGGPTPSSYAPSHPPRLLPLD
 MQGNQILVFPSSSSSSSQAPGQPPGNQAEHGAVTVGGTSVGS LGVPGSVGGVPGGTGSDGNKIFLCHC
 GKAFSHKSMRDRHVNMLNLRPFDPCVNCNKKFKMKHHLTEHMKTHTGLKPYECGCAKKFMWRDSFMRHR
 GHCERRHRLGGVGAVPGPTPTGPSLPSKRESPGVGGSGDEASAATPPSSRRVWSPRVHKVEMGFGGG
 GGAN

TRTRPLEQKLISEEDLAANDILDYKDDDDKV

Chromatograms: https://cdn.origene.com/chromatograms/mk6310_g08.zip

Restriction Sites: SgfI-MluI

Cloning Scheme:



ACCN: NM_005453

ORF Size: 1902 bp

OTI Disclaimer: The molecular sequence of this clone aligns with the gene accession number as a point of reference only. However, individual transcript sequences of the same gene can differ through naturally occurring variations (e.g. polymorphisms), each with its own valid existence. This clone is substantially in agreement with the reference, but a complete review of all prevailing variants is recommended prior to use. [More info](#)

OTI Annotation: This clone was engineered to express the complete ORF with an expression tag. Expression varies depending on the nature of the gene.

Components: The ORF clone is ion-exchange column purified and shipped in a 2D barcoded Matrix tube containing 10ug of transfection-ready, dried plasmid DNA (reconstitute with 100 ul of water).

Reconstitution Method:

1. Centrifuge at 5,000xg for 5min.
2. Carefully open the tube and add 100ul of sterile water to dissolve the DNA.
3. Close the tube and incubate for 10 minutes at room temperature.
4. Briefly vortex the tube and then do a quick spin (less than 5000xg) to concentrate the liquid at the bottom.
5. Store the suspended plasmid at -20°C. The DNA is stable for at least one year from date of shipping when stored at -20°C.

Note: Plasmids are not sterile. For experiments where strict sterility is required, filtration with 0.22um filter is required.

RefSeq: [NM_005453.3](#), [NP_005444.3](#)

RefSeq Size: 2681 bp

RefSeq ORF: 1905 bp

Locus ID: 9278

UniProt ID: [O15209](#)

Cytogenetics: 6p21.32

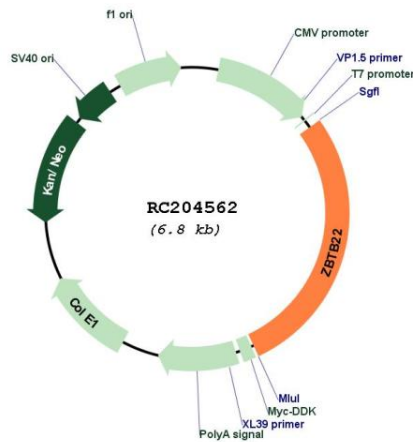
Domains: BTB, zf-C2H2

Protein Families: Transcription Factors

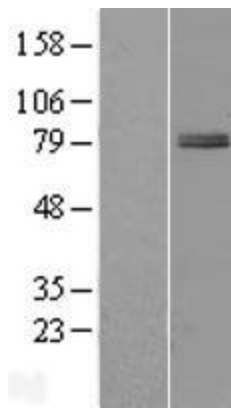
MW: 65.6 kDa

Gene Summary: May be involved in transcriptional regulation.[UniProtKB/Swiss-Prot Function]

Product images:



Circular map for RC204562



Western blot validation of overexpression lysate (Cat# [LY428827]) using anti-DDK antibody (Cat# [TA50011-100]). Left: Cell lysates from untransfected HEK293T cells; Right: Cell lysates from HEK293T cells transfected with [RC227312] using transfection reagent MegaTran 2.0 (Cat# [TT210002]).