

Product datasheet for RC204560

C11orf68 (NM_031450) Human Tagged ORF Clone

Product data:

Product Type:	Expression Plasmids
Product Name:	C11orf68 (NM_031450) Human Tagged ORF Clone
Tag:	Myc-DDK
Symbol:	C11orf68
Synonyms:	BLES03; P5326
Mammalian Cell Selection:	Neomycin
Vector:	pCMV6-Entry (PS100001)
E. coli Selection:	Kanamycin (25 ug/mL)
ORF Nucleotide Sequence:	>RC204560 ORF sequence Red=Cloning site Blue=ORF Green=Tags(s)

TTTTGTAATACGACTCACTATAGGGCGCCGGAATTCGTCGACTGGATCCGGTACCGAGGAGATCTGCC
GCC**CGATCGCC**

ATGGAACCAGGTGAGGAGCTGGAAGAGGAGGGCTCTCCAGGTGGCCGTGAGGATGGCTTCACCGCCGAGC
ACCTGGCTGCAGAGGCCATGGCAGCTGACATGGACCCCTGGCTAGTGTGGATGCCCGCACAAACGCCTGC
CACTGAGCTGGATGCCTGGCTGGCCAAGTACCCACCATCCAAGTTACCCGCTATGGGGACCCCGTTCA
CCCAACTCAGAGCCTGTGGCTGGATTGCAGTGTATGGGCAGGGCTACAGCCCAACTCCGGGGACGTGC
AGGGCCTGCAGGCAGCCTGGGAAGCTCTGCAGACCAGTGGCGGCCCATCACACCGGGTACCCTGCGCCA
GCTCGCCATCACCCACCAGTGTCTCGGGCAAGTGGCTTATGCATCTGGCACCGGGCTTCAAGCTGGAC
CACGCCTGGGCTGGCATTGCCCGGGCCGTGGTTGAAGGCCGGCTTCAGGTGGCCAAGGTGAGCCACGTG
CCAAGGAGGGTGGGCGCCAGGTCACTGTGTTACACGGACGACTTCACGGACCGCTTGGGTGACTGGA
GGCGGATTACCCATCCGTGCAGCGGGCATTAAAGTGCCTGCTCACCTACAAGCCTGATGTCTACACCTAC
CTGGGCATCTACCGGGCCAATCGCTGGCACCTCTGCCCACTCTCTATGAGAGCCGTTCCAGCTTGGGG
GTAGTGCCCGTGGCTCCCGAGTGCTTGACCGTGCCAACAACGTGGAACCTGACC

ACGCGTACGCGGCCGCTCGAGCAGAACTCATCTCAGAAGAGGATCTGGCAGCAAATGATATCCTGGATT
ACAAGGATGACGACGATAAGGTTTAA



[View online »](#)

Protein Sequence: >RC204560 protein sequence
Red=Cloning site Green=Tags(s)

MEPGEELEEEGSPGGREDGFTA EHLAAEAMAADMPWL VFDARTTPATELDAWLAKYPPSQVTRYGDPGS
 PNSEPVGWIAVYGGYSPNSGDVQGLQAAWEALQTSGRPITPGTLRQLAI THHVL SGKWL MHLAPGFKLD
 HAWAGIARAVVEGRLQVAKVSPRAKEGGRQVICVYTDDF TDR LGVLEADS AIRAAGIKCLLTYKPDVYTY
 LGIYRANRWHLCPTLYESRFQLGGSARGSRVLD RANNVELT

TRTRPLEQKLISEEDLAANDILDYKDDDDKV

Chromatograms: https://cdn.origene.com/chromatograms/mk6310_b01.zip

Restriction Sites: SgfI-MluI

Cloning Scheme:

Cloning sites used for ORF Shuttling:



* The last codon before the Stop codon of the ORF

ACCN: NM_031450

ORF Size: 753 bp

OTI Disclaimer: The molecular sequence of this clone aligns with the gene accession number as a point of reference only. However, individual transcript sequences of the same gene can differ through naturally occurring variations (e.g. polymorphisms), each with its own valid existence. This clone is substantially in agreement with the reference, but a complete review of all prevailing variants is recommended prior to use. [More info](#)

OTI Annotation: This clone was engineered to express the complete ORF with an expression tag. Expression varies depending on the nature of the gene.

Components: The ORF clone is ion-exchange column purified and shipped in a 2D barcoded Matrix tube containing 10ug of transfection-ready, dried plasmid DNA (reconstitute with 100 ul of water).

Reconstitution Method:

1. Centrifuge at 5,000xg for 5min.
2. Carefully open the tube and add 100ul of sterile water to dissolve the DNA.
3. Close the tube and incubate for 10 minutes at room temperature.
4. Briefly vortex the tube and then do a quick spin (less than 5000xg) to concentrate the liquid at the bottom.
5. Store the suspended plasmid at -20°C. The DNA is stable for at least one year from date of shipping when stored at -20°C.

Note: Plasmids are not sterile. For experiments where strict sterility is required, filtration with 0.22um filter is required.

RefSeq: [NM_031450.2](#), [NP_113638.1](#)

RefSeq Size: 1568 bp

RefSeq ORF: 879 bp

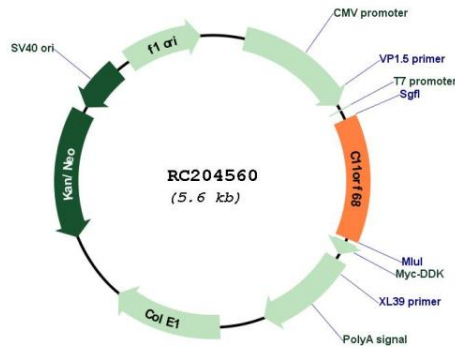
Locus ID: 83638

UniProt ID: [Q9H3H3](#)

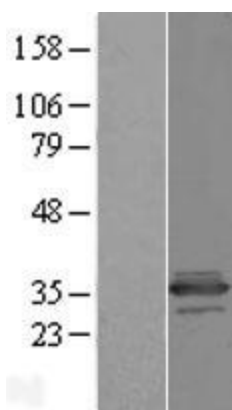
Cytogenetics: 11q13.1

MW: 27.4 kDa

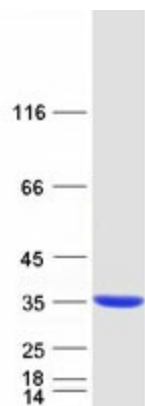
Product images:



Circular map for RC204560



Western blot validation of overexpression lysate (Cat# [LY410522]) using anti-DDK antibody (Cat# [TA50011-100]). Left: Cell lysates from untransfected HEK293T cells; Right: Cell lysates from HEK293T cells transfected with RC204560 using transfection reagent MegaTran 2.0 (Cat# [TT210002]).



Coomassie blue staining of purified C11orf68 protein (Cat# [TP304560]). The protein was produced from HEK293T cells transfected with C11orf68 cDNA clone (Cat# RC204560) using MegaTran 2.0 (Cat# [TT210002]).