

## Product datasheet for RC204558

### CMTM5 (NM\_138460) Human Tagged ORF Clone

#### Product data:

**Product Type:** Expression Plasmids  
**Product Name:** CMTM5 (NM\_138460) Human Tagged ORF Clone  
**Tag:** Myc-DDK  
**Symbol:** CMTM5  
**Synonyms:** CKLFSF5  
**Mammalian Cell Selection:** Neomycin  
**Vector:** pCMV6-Entry (PS100001)  
**E. coli Selection:** Kanamycin (25 ug/mL)  
**ORF Nucleotide Sequence:** >RC204558 ORF sequence  
 Red=Cloning site Blue=ORF Green=Tags(s)

TTTTGTAATACGACTCACTATAGGGCGCCGGGAATTCGTCGACTGGATCCGGTACCGAGGAGATCTGCC  
 GCC**CGATCGCC**

ATGCTCAGTGCTCGAGATCGCCGGGACCGGCACCCTGAGGAGGGGTAGTTGCAGAGCTCCAGGGCTTCG  
 CGGTGGACAAGGCCTTCTCACCTCCCACAAGGCATCCTGTGGAAACCGAGCTGGCCCTGACCCTCAT  
 CATCTTCATCTGCTTACGGCCTCCATCTCTGCCTACATGGCCCGGGCGCTACTGGAGTTCTTCATCACA  
 CTTGCCTTCTCTCTATGCCACCCAGTACTACCAGCGCTTCGACCGAATTAAGTGGCCTGTCTGG  
 ACTTCCTGCGCTGTGTCAGTGCCATCATCATCTTCTGGTGGTCTCCTTTGCAGCTGTGACCTCCGGGA  
 CGGAGCTGCCATTGCTGCTTTTGTGGCATCATCCTGGTTCCATCTTGCCTATGATGCCTTCAAG  
 ATCTACCGGACTGAGATGGCACCCGGGGCCAGCCAGGGGGACCAGCAG

**ACGCGT**ACGCGGCCGCTCGAGCAGAACTCATCTCAGAAGAGGATCTGGCAGCAAATGATATCCTGGATT  
 ACAAGGATGACGACGATAAGGTTTAA

**Protein Sequence:** >RC204558 protein sequence  
 Red=Cloning site Green=Tags(s)

MLSARDRRDRHPEEGVVAELQGFVAVDKAFLTSKGGILLETALTLIIIFICTASISAYMAAALLEFFIT  
 LAFLFLYATQYYQRFDRINWPCLDFLRVSAIIIFLVVFAAVTSRDGAAIAAFVFGIILVSIFAYDAFK  
 IYRTEMAPGASQGDQQ

**TR**TRPLEQK**L**I SEEDLAANDILDYKDDDDKV

**Chromatograms:** [https://cdn.origene.com/chromatograms/mk6310\\_g11.zip](https://cdn.origene.com/chromatograms/mk6310_g11.zip)



[View online »](#)

Restriction Sites: SgfI-MluI

Cloning Scheme:



ACCN: NM\_138460

ORF Size: 468 bp

OTI Disclaimer: The molecular sequence of this clone aligns with the gene accession number as a point of reference only. However, individual transcript sequences of the same gene can differ through naturally occurring variations (e.g. polymorphisms), each with its own valid existence. This clone is substantially in agreement with the reference, but a complete review of all prevailing variants is recommended prior to use. [More info](#)

OTI Annotation: This clone was engineered to express the complete ORF with an expression tag. Expression varies depending on the nature of the gene.

Components: The ORF clone is ion-exchange column purified and shipped in a 2D barcoded Matrix tube containing 10ug of transfection-ready, dried plasmid DNA (reconstitute with 100 ul of water).

Reconstitution Method:

1. Centrifuge at 5,000xg for 5min.
2. Carefully open the tube and add 100ul of sterile water to dissolve the DNA.
3. Close the tube and incubate for 10 minutes at room temperature.
4. Briefly vortex the tube and then do a quick spin (less than 5000xg) to concentrate the liquid at the bottom.
5. Store the suspended plasmid at -20°C. The DNA is stable for at least one year from date of shipping when stored at -20°C.

Note: Plasmids are not sterile. For experiments where strict sterility is required, filtration with 0.22um filter is required.

RefSeq: [NM\\_138460.3](#)

RefSeq Size: 1217 bp

RefSeq ORF: 471 bp

**Locus ID:** 116173

**UniProt ID:** [Q96DZ9](#)

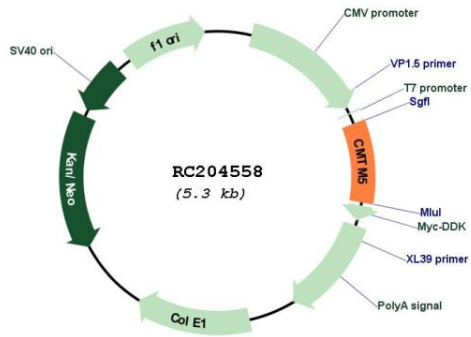
**Cytogenetics:** 14q11.2

**Protein Families:** Transmembrane

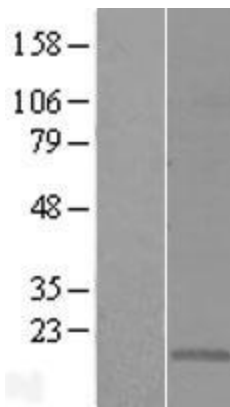
**MW:** 17.4 kDa

**Gene Summary:** This gene encodes a member of the chemokine-like factor superfamily. This family of genes encodes multi-pass membrane proteins that are similar to both the chemokine and the transmembrane 4 superfamilies of signaling molecules. The encoded protein may exhibit tumor suppressor activity. Alternative splicing results in multiple transcript variants. [provided by RefSeq, Jan 2014]

**Product images:**



Circular map for RC204558



Western blot validation of overexpression lysate (Cat# [LY408569]) using anti-DDK antibody (Cat# [TA50011-100]). Left: Cell lysates from untransfected HEK293T cells; Right: Cell lysates from HEK293T cells transfected with RC204558 using transfection reagent MegaTran 2.0 (Cat# [TT210002]).