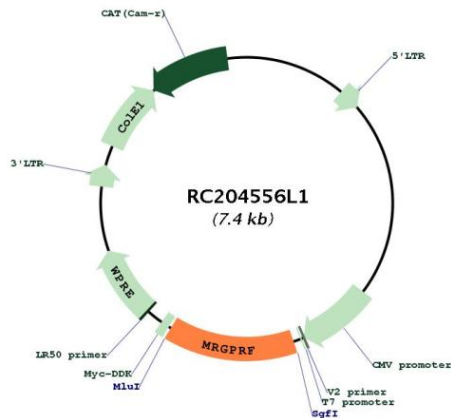
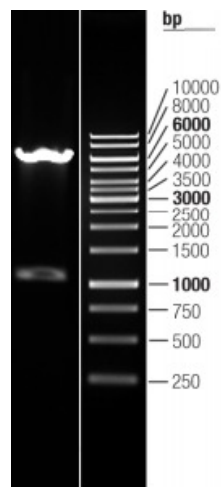


OTI Disclaimer:	The molecular sequence of this clone aligns with the gene accession number as a point of reference only. However, individual transcript sequences of the same gene can differ through naturally occurring variations (e.g. polymorphisms), each with its own valid existence. This clone is substantially in agreement with the reference, but a complete review of all prevailing variants is recommended prior to use. More info
OTI Annotation:	This clone was engineered to express the complete ORF with an expression tag. Expression varies depending on the nature of the gene.
Components:	The ORF clone is ion-exchange column purified and shipped in a 2D barcoded Matrix tube containing 10ug of transfection-ready, dried plasmid DNA (reconstitute with 100 ul of water).
Reconstitution Method:	<ol style="list-style-type: none"> 1. Centrifuge at 5,000xg for 5min. 2. Carefully open the tube and add 100ul of sterile water to dissolve the DNA. 3. Close the tube and incubate for 10 minutes at room temperature. 4. Briefly vortex the tube and then do a quick spin (less than 5000xg) to concentrate the liquid at the bottom. 5. Store the suspended plasmid at -20°C. The DNA is stable for at least one year from date of shipping when stored at -20°C.
RefSeq:	NM_145015.2
RefSeq Size:	2308 bp
RefSeq ORF:	1032 bp
Locus ID:	116535
UniProt ID:	Q96AM1
Cytogenetics:	11q13.3
Domains:	7tm_1
MW:	38.2 kDa
Gene Summary:	Orphan receptor. May bind to a neuropeptide and may regulate nociceptor function and/or development, including the sensation or modulation of pain (By similarity).[UniProtKB/Swiss-Prot Function]

Product images:



Circular map for RC204556L1



Double digestion of RC204556L1 using SgfI and MluI