

Product datasheet for **RC204556**

MRGPRF (NM_145015) Human Tagged ORF Clone

Product data:

Product Type:	Expression Plasmids
Product Name:	MRGPRF (NM_145015) Human Tagged ORF Clone
Tag:	Myc-DDK
Symbol:	MRGPRF
Synonyms:	GPR140; GPR168; MRGF; RTA
Mammalian Cell Selection:	Neomycin
Vector:	pCMV6-Entry (PS100001)
E. coli Selection:	Kanamycin (25 ug/mL)
ORF Nucleotide Sequence:	>RC204556 ORF sequence Red=Cloning site Blue=ORF Green=Tags(s)

TTTTGTAATACGACTCACTATAGGGCGGCCGGAATTCGTCGACTGGATCCGGTACCGAGGAGATCTGCC
GCC**CGCATCGCC**

ATGGCTGGAAACTGCTCCTGGGAGGCCATCCCGCAACAGGAACAAGATGTGCCCTGGCCTGAGCGAGG
CCCCGGAAGCTACAGCCGGGGTTCCTGACCATCGAGCAGATCGCGATGCTGCCGCTCCGGCCGTCAT
GAACTACATCTTCTGCTCCTCTGCCTGTGTGGCCTGGTGGGCAACGGGCTGGTCTCTGGTTTTTCGGC
TTCTCCATCAAGAGGAACCCCTTCTCCATCTACTTCTGCACCTGGCCAGCGCCGATGTGGGCTACCTCT
TCAGCAAGGCGGTGTTCTCCATCTGAACACGGGGGGTTCCTGGGCACGTTTGCCGACTACATCCGCAG
CGTGTGCCGGTCTGGGGCTCTGCATGTTCTTACCGGCGTGAGCCTCTGCCGCGCTGACGCGCCGAG
CGCTGCGCCTCGGTTCATCTTCCCGCCTGGTACTGGCGCCGGCGGCCAAGCGCCTGTGCGCCGTGGTGT
GCGCCCTGCTGTGGGTCTGTCCCTCTGGTCACTGCCTGCACAACACTTCTGCGTGTCTCTGGGCCG
CGGGGCCCGCGCGGCTGCAGGCACATGGACATCTTCTGGGCATCCTCCTGTTCTGCTCTGCTGC
CCGCTCATGGTGTGCCCTGCCTGGCCATCCTGCACGTGGAGTGCCGGGCCGACGGCGCCAGCGCT
CTGCCAAGCTCAACCACGTCATCTGGCCATGGTCTCCGTCTTCTGGTGTCTCCATCTACTTAGGGAT
CGACTGGTTCTTCTGGGTCTTCCAGATCCCGGCCCTTCCCGAGTACGTCACCTGACCTGTGCATC
TGATCAACAGCAGCGCCAAGCCATCGTCTACTTCTGGCCGGGAGGACAAGTCGACGGCTGTGGG
AGCCGCTCAGGGTGGTCTTCCAGCGGGCCCTGCGGGACGCGCTGAGCTGGGGAGGCCGGGGCAGCAC
GCCCAACACAGTCACCATGGAGATGCAGTGTCCCCGGGGAACGCCTCC

ACGCGTACGCGGCCGCTCGAGCAGAAACTCATCTCAGAAGAGGATCTGGCAGCAAATGATATCCTGGATT
ACAAGGATGACGACGATAAGGTTTAA



[View online »](#)

Protein Sequence: >RC204556 protein sequence
Red=Cloning site Green=Tags(s)

MAGNCSWEAHPGNRNKMCPGLSEAPELYSRGFLTIEQIAMLPPPAVMNYIFLLLCLCGLVGNLVLWFFG
 FSIKRNPFISIYFLHLASADVGYLFSKAVFSILNTGGFLGTFADYIRSVCRVLGLCMFLTGVSLLPAVSAE
 RCASVIFPAWYWRRRPKRLSAVVCALLWVLSLLVTCLHNYFCVFLGRGAPGAACRHMDFLIGILLFLLCC
 PLMVLPLCALILHVECRARRRQRSAKLNHVILAMVSVFLVSSIYLGIDWFLFWVFQIPAPFPEYVTDLCI
 CINS SAKPIVYFLAGRDKSURLWEPLRVVFQRALRDGAELGEAGGSTPNTVTMEMQCPPGNAS

TRTRPLEQKLISEEDLAANDILDYKDDDDKV

Chromatograms: https://cdn.origene.com/chromatograms/mk6010_h04.zip

Restriction Sites: SgfI-MluI

Cloning Scheme:

Cloning sites used for ORF Shuttling:



* The last codon before the Stop codon of the ORF

ACCN: NM_145015

ORF Size: 1029 bp

OTI Disclaimer: The molecular sequence of this clone aligns with the gene accession number as a point of reference only. However, individual transcript sequences of the same gene can differ through naturally occurring variations (e.g. polymorphisms), each with its own valid existence. This clone is substantially in agreement with the reference, but a complete review of all prevailing variants is recommended prior to use. [More info](#)

OTI Annotation: This clone was engineered to express the complete ORF with an expression tag. Expression varies depending on the nature of the gene.

Components: The ORF clone is ion-exchange column purified and shipped in a 2D barcoded Matrix tube containing 10ug of transfection-ready, dried plasmid DNA (reconstitute with 100 ul of water).

Reconstitution Method:

1. Centrifuge at 5,000xg for 5min.
2. Carefully open the tube and add 100ul of sterile water to dissolve the DNA.
3. Close the tube and incubate for 10 minutes at room temperature.
4. Briefly vortex the tube and then do a quick spin (less than 5000xg) to concentrate the liquid at the bottom.
5. Store the suspended plasmid at -20°C. The DNA is stable for at least one year from date of shipping when stored at -20°C.

Note: Plasmids are not sterile. For experiments where strict sterility is required, filtration with 0.22um filter is required.

RefSeq: [NM_145015.5](#)

RefSeq Size: 2308 bp

RefSeq ORF: 1032 bp

Locus ID: 116535

UniProt ID: [Q96AM1](#)

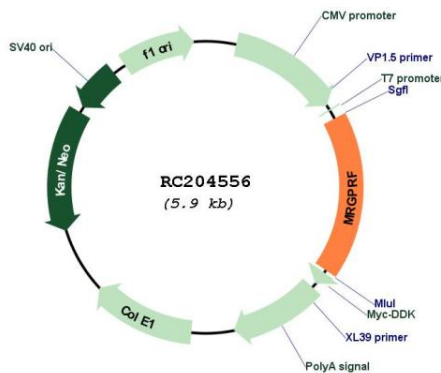
Cytogenetics: 11q13.3

Domains: 7tm_1

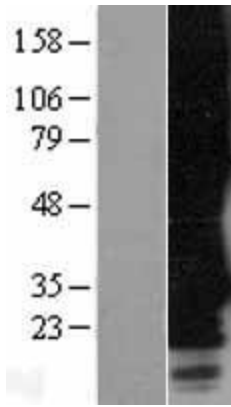
MW: 38.2 kDa

Gene Summary: Orphan receptor. May bind to a neuropeptide and may regulate nociceptor function and/or development, including the sensation or modulation of pain (By similarity).[UniProtKB/Swiss-Prot Function]

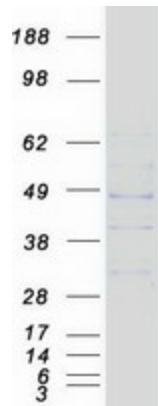
Product images:



Circular map for RC204556



Western blot validation of overexpression lysate (Cat# [LY420613]) using anti-DDK antibody (Cat# [TA50011-100]). Left: Cell lysates from untransfected HEK293T cells; Right: Cell lysates from HEK293T cells transfected with [RC212343] using transfection reagent MegaTran 2.0 (Cat# [TT210002]).



Coomassie blue staining of purified MRGPRF protein (Cat# [TP304556]). The protein was produced from HEK293T cells transfected with MRGPRF cDNA clone (Cat# RC204556) using MegaTran 2.0 (Cat# [TT210002]).