

Product datasheet for RC204555

C22orf23 (NM_032561) Human Tagged ORF Clone

Product data:

Product Type:	Expression Plasmids
Product Name:	C22orf23 (NM_032561) Human Tagged ORF Clone
Tag:	Myc-DDK
Symbol:	C22orf23
Synonyms:	dj1039K5.6; EVG1
Mammalian Cell Selection:	Neomycin
Vector:	pCMV6-Entry (PS100001)
E. coli Selection:	Kanamycin (25 ug/mL)
ORF Nucleotide Sequence:	>RC204555 ORF sequence Red=Cloning site Blue=ORF Green=Tags(s)

TTTTGTAATACGACTCACTATAGGGCGGCCGGAATTCGTCGACTGGATCCGGTACCGAGGAGATCTGCC
GCC**CGATCGCC**

ATGGCTTCACAGAAGCAGATGGAGGTAGTGACCAAAGGAAGTGGGTTCCGGCGCCGCCCAAGACCATCA
CTTACACCCCGGGGACCTGCGAGCTGCTCAGAGTGATGATGAAGGAATCCAACTGACGAACATCCAGCA
GCGCCACATCATGGACATCATGAAAAGAGGAGATGCTTTGCCCTACAGTGCAGCCCAACATCCAGCCAG
AGAGTCTTACCTTCCAAGCAAATAGCCTCGCCATCTACCTGCCTCCCATCTCGCAGCCCGTCCCACC
TCCGGCCTGCCAACATGTGTCAAGCCAATGGGGCCTACAGCCGGGAGCAGTTCAAGCCTCAAGCCACCAG
GGATTTGGAGAAGGAGAAACAAAGACTCCAAAATATCTTTGCCACGGGGAAGGACATGGAGGAACGGAAA
AGAAAGGCCCTCCTGCACGACAGAAGGCTCCAGCCCCTGAGCTAGACCGATTTGAAGAGCTGGTGAAGG
AAATCCAGGAGAGGAAAGAAATCCTGGCTGACATGGAGGCCCTGGGACAGGGCAAACAGTACCGAGGAAT
CATCTTGCTGAAATCTCCAGAAACTCCGGAAATGGAAGACATTGACCACAGAAGGAGTGAGGAACTT
AGGAAGGGTCTTGCCACCACT

ACGCGTACGCGGCGCTCGAGCAGAAACTCATCTCAGAAGAGGATCTGGCAGCAAATGATATCTGGATT
ACAAGGATGACGACGATAAGGTTTAA



[View online »](#)

Protein Sequence: >RC204555 protein sequence
Red=Cloning site Green=Tags(s)

MASQKQMEVVTKGTGFRRRPKTITYTPGTCELLRVMKESKLTNIQQRHIMDIMKRGDALPLQCSPTSSQ
 RVLPSKQIASPIYLPPILAARPHLRPANMCQANGAYSREQFKPQATRDLKEKQRLQNI FATGKDMEEK
 RKAPPARQKAPAPELDRFEELVKEIQERKEFLADMEALGQGKQYRGIILAEISQKLREMEDIDHRRSEEL
 RKGLATT

TRTRPLEQKLISEEDLAANDILDYKDDDDKV

Chromatograms: https://cdn.origene.com/chromatograms/mk6326_b09.zip

Restriction Sites: SgfI-MluI

Cloning Scheme:



ACCN: NM_032561

ORF Size: 651 bp

OTI Disclaimer: The molecular sequence of this clone aligns with the gene accession number as a point of reference only. However, individual transcript sequences of the same gene can differ through naturally occurring variations (e.g. polymorphisms), each with its own valid existence. This clone is substantially in agreement with the reference, but a complete review of all prevailing variants is recommended prior to use. [More info](#)

OTI Annotation: This clone was engineered to express the complete ORF with an expression tag. Expression varies depending on the nature of the gene.

Components: The ORF clone is ion-exchange column purified and shipped in a 2D barcoded Matrix tube containing 10ug of transfection-ready, dried plasmid DNA (reconstitute with 100 ul of water).

Reconstitution Method:

1. Centrifuge at 5,000xg for 5min.
2. Carefully open the tube and add 100ul of sterile water to dissolve the DNA.
3. Close the tube and incubate for 10 minutes at room temperature.
4. Briefly vortex the tube and then do a quick spin (less than 5000xg) to concentrate the liquid at the bottom.
5. Store the suspended plasmid at -20°C. The DNA is stable for at least one year from date of shipping when stored at -20°C.

RefSeq: [NM_032561.1](#)

RefSeq Size: 1988 bp

RefSeq ORF: 654 bp

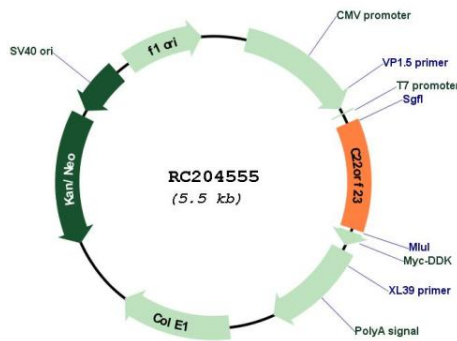
Locus ID: 84645

UniProt ID: [Q9BZE7](#)

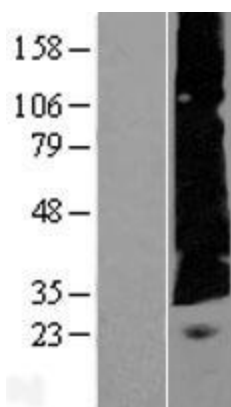
Cytogenetics: 22q13.1

MW: 25 kDa

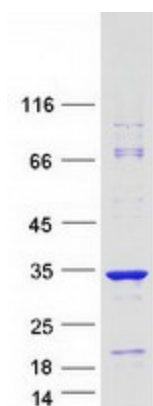
Product images:



Circular map for RC204555



Western blot validation of overexpression lysate (Cat# [LY409996]) using anti-DDK antibody (Cat# [TA50011-100]). Left: Cell lysates from untransfected HEK293T cells; Right: Cell lysates from HEK293T cells transfected with RC204555 using transfection reagent MegaTran 2.0 (Cat# [TT210002]).



Coomassie blue staining of purified C22orf23 protein (Cat# [TP304555]). The protein was produced from HEK293T cells transfected with C22orf23 cDNA clone (Cat# RC204555) using MegaTran 2.0 (Cat# [TT210002]).