

Product datasheet for **RC204549**

Exportin T (XPOT) (NM_007235) Human Tagged ORF Clone

Product data:

Product Type:	Expression Plasmids
Product Name:	Exportin T (XPOT) (NM_007235) Human Tagged ORF Clone
Tag:	Myc-DDK
Symbol:	Exportin T
Synonyms:	XPO3
Mammalian Cell Selection:	Neomycin
Vector:	pCMV6-Entry (PS100001)
E. coli Selection:	Kanamycin (25 ug/mL)



[View online »](#)

ORF Nucleotide
Sequence:

>RC204549 representing NM_007235
Red=Cloning site Blue=ORF Green=Tags(s)

TTTTGTAATACGACTCACTATAGGGCGGCCGGGAATTCGTCGACTGGATCCGGTACCGAGGAGATCTGCC
GCC**CGCATCGCC**

ATGGATGAACAGGCTCTATTAGGGCTAAATCCAATGCTGATTAGACTTTAGACAAAGGGCCCTGGCC
ATTTTGGCAGTTAAAAATTTCCCGAGATGCCTGGCAGGTGTGTGCAGAAGCTCTAGCCAGAGGACATA
CAGTGATGATCATGTGAAGTTTTTCTGCTTTCAAGTACTGGAACATCAAGTTAAATACAAATACTCAGAA
CTAACCCTGTTCAACAACAGCTAATTAGGGAGACGCTCATATCATGGCTGCAAGCTCAGATGCTGAATC
CCCAACCAGAGAAGACCTTTATACGAAATAAAGCCGCCAAGTCTTCGCCTTGCTTTTTTGTACAGAGTA
TCTCACTAAGTGGCCCAAGTTTTTTTTGACATTCTCTCAGTAGTGGACCTAAATCCAAGGGGAGTAGAT
CTCTACCTGCGAATCCTCATGGCTATTGATTAGAGTTGGTGGATCGTGATGTGGTGCATACATCAGAGG
AGGCTCGTAGGAATACTCTCATAAAAGATACCATGAGGGAACAGTGCATTCCAAATCTGGTGAATCATG
GTACCAAATATTACAAAATTATCAGTTTACTAATTCTGAAAGTACGCTGTCAGTGCCTTGAAGTAGTTGGG
GCTTATGTCTCTGGATAGACTTATCCCTTATAGCCAATGATAGGTTTATAAATATGCTGCTAGGTCATA
TGTC AATAGAAGTTCTACGGGAAGAAGCATGTGACTGTTATTTGAAGTTGTAATAAAGGAATGGACCC
TGTGATAAAAAGAACTAGTGGAACTTTGTGTCAAGTATTACAGTCTGCTGGGTTTTTTCAGCATTGAC
CAGGAAGAAGATGTTGACTTCTGGCCAGATTTTCTAAGTTGGTAAATGGAATGGGACAGTCATTGATAG
TTAGTTGGAGTAAATTAATTAAGAATGGGGATTAAGAATGCTCAAGAGGCACTACAAGCTATTGAAAC
AAAAGTGGCACTGATGTTGCAGCTACTAATTCATGAGGATGATGATTTTCTTCTAATATTATTGGATTT
TGTTACGATTATCTTCATTTTTGAAACAGCTTACAGTGTCTCGGATCAGCAAAAAGCTAATGTAGAGG
CAATCATGTTGGCCGTTATGAAAAAATTGACTTACGATGAAGAATAACTTTGAAAAATGAGGGTGAGA
TGAAGCCATGTTGTAGAATATAGAAAAACAAGTTACTGTTGGACAGGCTTGCTCAAGTTTACCA
GAGTTACTACTGGCCTCTGTTTCGACAGTTTTTGTCTACACTGCAGAATTGGCAGACTACACGGTTTA
TGGAAGTTGAAGTAGCAATAAGATTGCTGTATATGTTGGCAGAAGCTCTTCCAGTATCTCATGGTCTCA
CTTCTCAGGTGATGTTTCAAAGCTAGTGTCTTTCAGGATATGATGCGAACTCTGGTAACATCAGGAGTC
AGTTCTATCAGCATACATCTGTGACATTGGAGTTCTTCGAAACTGTTGTAGATATGAAAAAGTTTTTCA
CAGTTGAACCTCAGCACATTCATGTACTAATGGCTTTCTTAGATCACAGAGGCTGCGGCATTCCAG
TGCAAAAGTTTCGAGCAGGACGGCTTACCTGTTTTCTAGATTTGTCAAATCTCTCAATAAGCAAATGAAT
CCTTTTCATTGAGGATATTTGAATAGAATAACAAGATTTATTAGAGCTTTCTCCACCTGAGAAATGGCCACC
AGTCTTACTGAGCAGCGATGATCAACTTTTTATTATGAGACAGCTGGAGTGTGATTGTTAATAGTGA
ATATCCGGCAGAAAGGAAACAAGCCTTAATGAGGAATCTGTTGACTCCACTAATGGAGAAGTTTAAAT
CTGTTAGAAAAGTTGATGCTGGCACAAGATGAAGAAAGGCAAGCCTCTCTAGCAGACTGTCTTAACCATG
CTGTTGGATTTGCAAGTCGAACCAAGTAAAGCTTTCAGCAACAACAGACTGTGAAACAATGTGGCTGTT
CGAAGTTTATCTGGACTGTTTACAGACATTTCCGACGCTCAGTTGTCCCTTACAAAAGGATATTCTC
AGAAGTGGAGTCCGACTTTCTTCATCGAATGATTATTTGCCTGGAGGAAGAAGTTCTTCCGTTTATT
CATCTGCTTCAGAACATATGCTCAAAGATTGTGAAGCAAAAGATCTCCAGGAGTTCATTCCTCTTATCAA
CCAGATTACGGCCAAATCAAGATACAGGTATCCCCGTTTTTACAACAGATGTTTCATGCCCTGCTTCAT
GCAATTTTTGAAGTGTGCTCCGGCCAGCAGAAGAAAATGACCAGTCTGCTGCTTTAGAGAAGCAGATGT
TGGCGAGGAGTTACTTTGCTTTCTGCAACAGTACAGGCAAGTGGGATGAGCGAAGTTATAGCAATCA
AGGTGCAGAGAATGTAGAAAGAGTGTGGTTACTGTTATCCAAGGAGCAGTTGAATATCCAGATCCAATT
GCACAGAAAACATGTTTTATCATCTCTCAAAGTTGGTGAACACTGGGGAGGTAAGATGGACCAGTGG
GATTTGCTGATTTGTTTATAAGCACATTGTCCCCGATGTTTCTAGCACCTTTAAAACAACCTTTGA
CCTGGCAGATGCACAAACAGTATTGGCTTTATCTGAGTGTGACGACTGAAAACAATTCATCTCAA
CGGGGCCAGAAATGTGTTTCAGTATCTTCAACAAGAATACCTGCCCTCCTTGAAGTAGCTCCAGAAATA
TTCAGGAGTTTTGTCAAGCGCTTCAGCAGCCTGATGCTAAAGTTTTTAAAAATTACTTAAAGGTGTTCTT
CCAGAGAGCAAAGCCC

ACGCGTACGCGGCCGCTCGAGCAGAAACTCATCTCAGAAGAGGATCTGGCAGCAAATGATATCCTGGATT
ACAAGGATGACGACGATAAGGTTTAA

Protein Sequence: >RC204549 representing NM_007235
 Red=Cloning site Green=Tags(s)

MDEQALLGLNPNADSDFRQALAYFEQLKISPDQVCAEALQRTYSDDHVKFFCFQVLEHQVKYKYS
 LTTVQQQLIRETLISWLQAQMLNPQPEKTFIRNKAAQVFAALLFVTEYLTWPKFFFDILSVVDLNPGRVD
 LYLRILMAIDSELVDRDVVHTSEEARRNTLIKDTMREQCIPNLVESWYQILQNYQFTNSEVTCQCLEVVG
 AYVSWIDLSLIANDRFINMLLGHMSIEVLREEACDCLFEVVNKGMDPVDMKMLVESLQVLSAGFFSID
 QEEDVDFLARFSKLVNMGQSLIVSWSKLIKNGDIKNAQEAQAIEKVALMLQLLIHEDDDISSNIIGF
 CYDYHLHLKQLTVLSDQQKANVEAIMLAVMKKLTIDEYVNFENEDEAMFVEYRKQLKLLLDRLAQVSP
 ELLLASVRRVFSSTLQNWQTTRFMEVEVAIRLLYMLAEALPVSHGAHFGSDVSKASALQDMMRTLVTSGV
 SSYQHTSVTLEFFETVVRYEKFFVPEPQHIPCVMFAFLDHRGLRHSSAKVRSRTAYLFSRFVSKLNQMN
 PFIEDILNRIQDLELSPENGHQSLLSSDDQLFIYETAGVLIVNSEYPAERKQALMRNLLTPLMEKFKI
 LLEKLMQAQDEERQASLADCLNHAVGFASRTSKAFSNKQTVKQCGCSEVYLDCLQTFPALSCPLQKDIL
 RSGVRTFLHRMIICLLEEVLPFIPSASEHMLKDCEAKDLQEFIPLINQITAKFKIQVSPFLQMFMLLH
 AIFEVLLRPAEENDQSAALEKQMLRRSYFAFLQVTGSGMSEVIANQGAENVERVLVTVIQAVEYDPDI
 AQKTCFIIILSKLVELWGGKDGVPVGFADFVYKHIVPACFLAPLKQTFDLADAQTVLALSECAVTLKTIHLK
 RGPPECVQYLQQEYLPQLVAPEIIQEFQALQQPDAKVFNKYLKVFVQRAKP

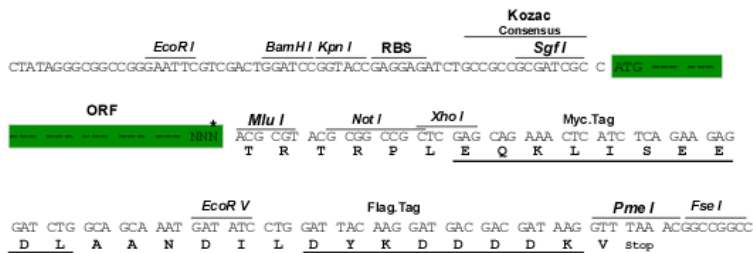
TRTRPLEQKLISEEDLAANDILDYKDDDDKV

Chromatograms: https://cdn.origene.com/chromatograms/mk8112_g12.zip

Restriction Sites: SgfI-MluI

Cloning Scheme:

Cloning sites used for ORF Shuttling:



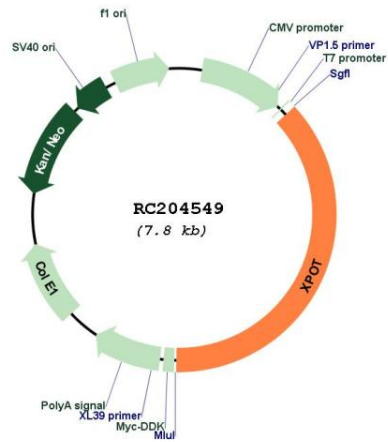
* The last codon before the Stop codon of the ORF

ACCN: NM_007235

ORF Size: 2886 bp

OTI Disclaimer:	The molecular sequence of this clone aligns with the gene accession number as a point of reference only. However, individual transcript sequences of the same gene can differ through naturally occurring variations (e.g. polymorphisms), each with its own valid existence. This clone is substantially in agreement with the reference, but a complete review of all prevailing variants is recommended prior to use. More info
OTI Annotation:	This clone was engineered to express the complete ORF with an expression tag. Expression varies depending on the nature of the gene.
Components:	The ORF clone is ion-exchange column purified and shipped in a 2D barcoded Matrix tube containing 10ug of transfection-ready, dried plasmid DNA (reconstitute with 100 ul of water).
Reconstitution Method:	<ol style="list-style-type: none">1. Centrifuge at 5,000xg for 5min.2. Carefully open the tube and add 100ul of sterile water to dissolve the DNA.3. Close the tube and incubate for 10 minutes at room temperature.4. Briefly vortex the tube and then do a quick spin (less than 5000xg) to concentrate the liquid at the bottom.5. Store the suspended plasmid at -20°C. The DNA is stable for at least one year from date of shipping when stored at -20°C.
Note:	Plasmids are not sterile. For experiments where strict sterility is required, filtration with 0.22um filter is required.
RefSeq:	NM_007235.6
RefSeq Size:	3961 bp
RefSeq ORF:	2889 bp
Locus ID:	11260
UniProt ID:	O43592
Cytogenetics:	12q14.2
Domains:	Exportin-t
Protein Families:	Druggable Genome
MW:	110 kDa
Gene Summary:	This gene encodes a protein belonging to the RAN-GTPase exportin family that mediates export of tRNA from the nucleus to the cytoplasm. Translocation of tRNA to the cytoplasm occurs once exportin has bound both tRNA and GTP-bound RAN. [provided by RefSeq, Jul 2008]

Product images:



Circular map for RC204549