

## Product datasheet for RC204542L3

### STRBP (NM\_018387) Human Tagged Lenti ORF Clone

#### Product data:

Product Type:	Expression Plasmids
Product Name:	STRBP (NM_018387) Human Tagged Lenti ORF Clone
Tag:	Myc-DDK
Symbol:	STRBP
Synonyms:	HEL162; ILF3L; p74; SPNR
Mammalian Cell Selection:	Puromycin
Vector:	pLenti-C-Myc-DDK-P2A-Puro (PS100092)
E. coli Selection:	Chloramphenicol (34 ug/mL)
ORF Nucleotide Sequence:	The ORF insert of this clone is exactly the same as(RC204542).
Restriction Sites:	SgfI-MluI
Cloning Scheme:	

Cloning sites used for ORF Shuttling:



\* The last codon before the Stop codon of the ORF.

ACCN:	NM_018387
ORF Size:	2016 bp



[View online »](#)

**OTI Disclaimer:** Due to the inherent nature of this plasmid, standard methods to replicate additional amounts of DNA in E. coli are highly likely to result in mutations and/or rearrangements. Therefore, OriGene does not guarantee the capability to replicate this plasmid DNA. Additional amounts of DNA can be purchased from OriGene with batch-specific, full-sequence verification at a reduced cost. Please contact our customer care team at [custsupport@origene.com](mailto:custsupport@origene.com) or by calling 301.340.3188 option 3 for pricing and delivery.

The molecular sequence of this clone aligns with the gene accession number as a point of reference only. However, individual transcript sequences of the same gene can differ through naturally occurring variations (e.g. polymorphisms), each with its own valid existence. This clone is substantially in agreement with the reference, but a complete review of all prevailing variants is recommended prior to use. [More info](#)

**OTI Annotation:** This clone was engineered to express the complete ORF with an expression tag. Expression varies depending on the nature of the gene.

**Components:** The ORF clone is ion-exchange column purified and shipped in a 2D barcoded Matrix tube containing 10ug of transfection-ready, dried plasmid DNA (reconstitute with 100 ul of water).

**Reconstitution Method:**

1. Centrifuge at 5,000xg for 5min.
2. Carefully open the tube and add 100ul of sterile water to dissolve the DNA.
3. Close the tube and incubate for 10 minutes at room temperature.
4. Briefly vortex the tube and then do a quick spin (less than 5000xg) to concentrate the liquid at the bottom.
5. Store the suspended plasmid at -20°C. The DNA is stable for at least one year from date of shipping when stored at -20°C.

**RefSeq:** [NM\\_018387.4](#)

**RefSeq Size:** 6426 bp

**RefSeq ORF:** 2019 bp

**Locus ID:** 55342

**UniProt ID:** [Q96S19](#)

**Cytogenetics:** 9q33.3

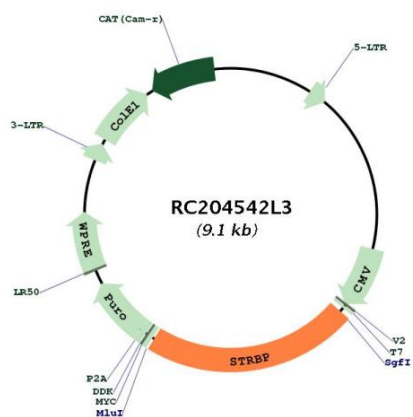
**Domains:** DSRM, DZF

**Protein Families:** Stem cell - Pluripotency

**MW:** 73.7 kDa

**Gene Summary:** Involved in spermatogenesis and sperm function. Plays a role in regulation of cell growth. Binds to double-stranded DNA and RNA. Binds most efficiently to poly(I:C) RNA than to poly(dI:dC) DNA. Binds also to single-stranded poly(G) RNA. Binds non-specifically to the mRNA PRM1 3' UTR and adenovirus VA RNA (By similarity).[UniProtKB/Swiss-Prot Function]

Product images:



Circular map for RC204542L3