

Product datasheet for **RC204541**

OSBPL3 (NM_015550) Human Tagged ORF Clone

Product data:

Product Type:	Expression Plasmids
Product Name:	OSBPL3 (NM_015550) Human Tagged ORF Clone
Tag:	Myc-DDK
Symbol:	OSBPL3
Synonyms:	ORP-3; ORP3; OSBP3
Mammalian Cell Selection:	Neomycin
Vector:	pCMV6-Entry (PS100001)
E. coli Selection:	Kanamycin (25 ug/mL)



[View online »](#)

ORF Nucleotide Sequence:

>RC204541 representing NM_015550
 Red=Cloning site Blue=ORF Green=Tags(s)

TTTTGTAATACGACTCACTATAGGGCGGCCGGAATTCGTCGACTGGATCCGGTACCGAGGAGATCTGCC
 GCC**CGCATCGCC**

ATGATGAGTGATGAGAAGAACCTTGGTGTGCCAAAAATTGGTATCACCTTCAAGGAGCACAAGTAGCT
 GCTCTTCCAAGCAAGGAAGTCGACAGGACAGCTGGGAAGTGGTGAAGGACTGAGGGGGAGATGAATTA
 CACCCAGGAGCCACAGTTCAGAAAGGATTTTTGCTGAAAAAGAGGAAGTGGCCCTTAAAAGGCTGGCAT
 AAGAGATTCTTCTATCTGGACAAAGGAATCTTGAATATGCCAAGAGCCAAACCGATATAGAGAGAGAGA
 AGCTGCATGGCTGCATTGATGTCGGGCTCTCAGTGATGCTGTAAAGAAGTCATCAAAATGCATAGACCT
 TGACACCGAGGAGCACATCTACCATCTGAAGTCAAGTCAGAAGAAGCTTTGATGAGTGGGTATCGAAA
 CTTGCCACCACAGAATGTATCGTCAGAATGAAATGCCATGTTCCACATGAAGTTAACCACTTTTTCT
 CAGGGTCCACCATCACAGACTCTTCATCTGGGGTGTGGACTCCATTTCAAGTAGGAAGCGTAGCAGTAT
 ATCAAAGCAGAATTTATTTCAAAGTGAAGCAATGTATCATTTTTCTTGTGGTGGTGAACACGAGTTCCA
 TTATGGTTACAGTCTTACAGAGGACATGGAAAAATGCTCCAAGACCTGGCGCACTGTCATGCCTACCTGG
 TAGAAATGAGCCAGCTCCTGCAAAGCATGGACGCTCCTGCATCGGACATACTCAGCACCAGCTATCAACGC
 CATCCAGGGTGGATCTTTTAAAAGTCCCAAAAAGGAAAAAGATCGCACAGGAGGTGGCGGTCCAGAGCT
 ATTGGCAAAGATGCTAAAGGAACACTGCAGGTCCCGAAACCTTTTTCTGGCCAGTAAGACTACACTCCT
 CCAATCCTAATTTGTCAACACTAGATTTTGGAGAAGAGAAAAATTATTCTGATGGCTCTGAAACCTCATC
 AGAGTTTTCTAAAATGCAAGAAGATCTGTGTCAATTGCCATAAAGTTTACTTCACTTTAAGGTCAGCT
 TTTAATATCATGTCAGCGGAGAGAGAGAAACTGAAGCAGCTGATGGAGCAGGATGCCTCCTCCTCCCGT
 CTGCTCAGGTCATTGGTCTGAAGAACGCCCTGTATCCGCCCTAGCACAAAACACAGATTTAAAGAAGC
 CTTACGCAGAATCCATGCCGAGTCTGTCTCCTCGACTCCCCCGCTGTCCGCAAGTCGGGTGACAATCTG
 GCAGAGGAAAACCTCCAGAGATGAAAACCGAGCTCTAGTTCATCAGCTTTCTAATGAAAGTAGACTCTCCA
 TCACTGACTCCCTTTCTGAGTTTTTGTGCTCAGGAAGTTCTGTTATCTCCAAGCTCTTCAGAAAACGA
 GATTTCTGATGATGACTCATATGTCAGTGACATAAGTGATAATCTTCTTAGATAATCTCAGTAATGAT
 TTAGATAATGAGAGACAGACCTTGGGGCTGTCTTGTAGTGGTGGGAAGCGAAGTCCCGGAGAAGAA
 CGTGCCTGCCGGCGCCCTGCCGAGCAGCAGTAACATCAGCCTGTGGAACATCCTGAGGAACAACATCGG
 GAAGGACCTGTCCAAGGTGGCCATGCCGGTGGAGCTGAACGAGCCCTGAACACGCTGCAGAGGCTCTGC
 GAGGAGCTGGAGTACAGCGAGCTCCTGGACAAGGCCGCGCAGATCCCAGCCCCTGAAAGGATGGTAT
 ATGTGGCAGCCTTTGCCATATCAGCGTATGCATCTAGCTACTACCGAGCTGGAAGCAAGCATTAAATCC
 GTTTCTTGAGAAAACATATGAATGTATTCGGGAGGACAAGGGCTTCCAGTTTTTTTTCAGAACAGGTCAGC
 CACCATCCGCCTATCTCTGCGTGTATGCTGAGTCTAGAAAATTTGTTTTCTGGCAAAGATGTGAGATGGA
 AAAACAAATCTGGGGCAAATCCATGAAAATGTTCCAATTGGCACAACCCATGTGACTCTGCCAGTTTTT
 TGGGGATCATTTTGTGAGTGAACAAGGTGACCTCTTGCATCCATAACATCTTAAGCGGGCAGAGGTGGATT
 GAGCACTATGGAGAGATTGTCAACAAGAACCTGCATGATGATTCTGCTACTGCAAAGTGAATTTTATAA
 AGGCAAAACTGGAGCACTAATGCCATGAGATTGAAGGCACAGTGTGACAGGAGTGGAAAAGCGGT
 TCATCGGCTGTTTGGGAAATGGCATGAAAGCATCTACTGTGGCGCGGCTCCTCTTCTGCCTGTGTATGG
 AGAGCAAATCCTATGCCGAAAGGCTACGAGCAATACTATAGCTTACACAGTTCGCTGGAATTAATG
 AAATGGATCCATCATCAAAGTCTTTATTGCCACCTACTGACACTCGATTTAGCCAGACCAGAGGTTTTCT
 AGAGGAAGGGAACCTAGAAGAAGCTGAAATACAAAAGCAGAGGATTGAACAACCTGCAGAGAGAAAGCGG
 CGGGTCTTAGAAGAAAATCATGTGGAGCACCAGCCTCGGTTTTTTCAGGAAATCCGACGATGACTCTTGGG
 TGAGCAACGGCACCTATTTGGAACCTAGAAAAGATCTTGGTTTTTCCAAGTGGACCATCTGTCTTATG
 G

ACGCGTACGCGGCCGCTCGAGCAGAAACTCATCTCAGAAGAGGATCTGGCAGCAAATGATATCCTGGATT
 ACAAGGATGACGACGATAAGGTTTAA

Protein Sequence: >RC204541 representing NM_015550
 Red=Cloning site Green=Tags(s)

MMSDEKNLGVSQLVSPSRSTSSCSSKQGSRQDSWEVVEGLRGEMNYTQEPVQKGFLLKKRKWPLKGWH
 KRFFYLKDGILKYAKSQTDIEREKLHGCDVGLSVMSVKKSSKIDLDTEEHIYHLKVKSEEVFDEWVSK
 LRHHRMYRQNEIAMFPHEVNHFFSGSTITDSSSGVFDSISSRKRSSISKQNLFTGNSVFSFCGGETRVP
 LWLQSSSEMEKCSKDLACHAYLVEMSQLLQSMQDLHRTYSAPAINAIQGGSFESPKKEKRSHRRWRSRA
 IGKDAKGTLQVPKPFSGPVRHLHSSNPNLSTLDFGEEKNYSDGSETSSSEFSKMQEDLCHIAHKVYFTLRSA
 FNIMSAEREKLLQMEQDASSPSAQVIGLKNALSSALAQNTDLKERLRRIHAESLLLDSPAVAKSGDNL
 AEENSRDENRALVHQLSNESRLSITDSLSEFFDAQEVLLSPSSSENEISDDSYVSDISDNLSDNLSDNL
 LDNERQTLGPVLDGREAKSRRRTCLPAPCPSSNISLWNILRNNIGKDLKVPVAMPVELNEPLNTLQRLC
 EELEYSELLDKAAQIPSPLERMVYVAFAISAYASSYRAGSKPFNPVLGETYECIREDKGFQFFSEQVS
 HHPPI SACHAESRNFVFWQDVRWKNKFWGKSMEIVPIGTHVTLPVFGDFEWNKVTSCIHNILSGQRWI
 EHYGEIVIKNLHDDSCYCKVNF IKAKYWTNAHEIEGTVFDRSGKAVHRLFGKWHEIYCGGGSSSACVW
 RANPMPKGYEQYYSFTQFALELNEMDPSSKSLLPPTDTRFRPDQRFLEEGNLEEAEIQKQRIEQLQRERR
 RVLEENHVEHQPRFFRKSDDDSWVSNGTYLELRKDLGFSKLDHPVLW

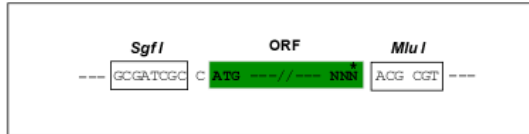
TRTRPLEQKLISEEDLAANDILDYKDDDDKV

Chromatograms: https://cdn.origene.com/chromatograms/mg2860_b04.zip

Restriction Sites: SgfI-MluI

Cloning Scheme:

Cloning sites used for ORF Shuttling:

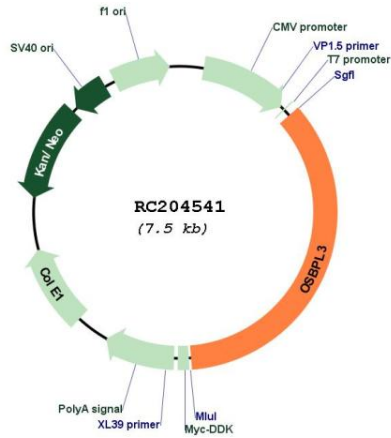


* The last codon before the Stop codon of the ORF

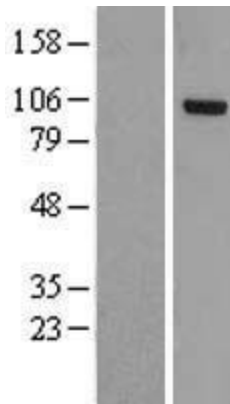
ACCN: NM_015550

ORF Size:	2661 bp
OTI Disclaimer:	The molecular sequence of this clone aligns with the gene accession number as a point of reference only. However, individual transcript sequences of the same gene can differ through naturally occurring variations (e.g. polymorphisms), each with its own valid existence. This clone is substantially in agreement with the reference, but a complete review of all prevailing variants is recommended prior to use. More info
OTI Annotation:	This clone was engineered to express the complete ORF with an expression tag. Expression varies depending on the nature of the gene.
Components:	The ORF clone is ion-exchange column purified and shipped in a 2D barcoded Matrix tube containing 10ug of transfection-ready, dried plasmid DNA (reconstitute with 100 ul of water).
Reconstitution Method:	<ol style="list-style-type: none">1. Centrifuge at 5,000xg for 5min.2. Carefully open the tube and add 100ul of sterile water to dissolve the DNA.3. Close the tube and incubate for 10 minutes at room temperature.4. Briefly vortex the tube and then do a quick spin (less than 5000xg) to concentrate the liquid at the bottom.5. Store the suspended plasmid at -20°C. The DNA is stable for at least one year from date of shipping when stored at -20°C.
RefSeq:	NM_015550.4
RefSeq Size:	6730 bp
RefSeq ORF:	2664 bp
Locus ID:	26031
UniProt ID:	Q9H4L5
Cytogenetics:	7p15.3
Domains:	Oxysterol_BP, PH
MW:	101 kDa
Gene Summary:	This gene encodes a member of the oxysterol-binding protein (OSBP) family, a group of intracellular lipid receptors. Most members contain an N-terminal pleckstrin homology domain and a highly conserved C-terminal OSBP-like sterol-binding domain. The encoded protein is involved in the regulation of cell adhesion and organization of the actin cytoskeleton. Alternative splicing results in multiple transcript variants. [provided by RefSeq, Aug 2013]

Product images:



Circular map for RC204541



Western blot validation of overexpression lysate (Cat# [LY414466]) using anti-DDK antibody (Cat# [TA50011-100]). Left: Cell lysates from untransfected HEK293T cells; Right: Cell lysates from HEK293T cells transfected with RC204541 using transfection reagent MegaTran 2.0 (Cat# [TT210002]).