

## Product datasheet for **RC204540**

### AHCYL2 (NM\_015328) Human Tagged ORF Clone

#### Product data:

Product Type:	Expression Plasmids
Product Name:	AHCYL2 (NM_015328) Human Tagged ORF Clone
Tag:	Myc-DDK
Symbol:	AHCYL2
Synonyms:	ADOHCYASE3; IRBIT2
Mammalian Cell Selection:	Neomycin
Vector:	pCMV6-Entry (PS100001)
E. coli Selection:	Kanamycin (25 ug/mL)



[View online »](#)

**ORF Nucleotide Sequence:**

>RC204540 ORF sequence  
 Red=Cloning site Blue=ORF Green=Tags(s)

TTTTGTAATACGACTCACTATAGGGCGGCCGGAATTCGTCGACTGGATCCGGTACCGAGGAGATCTGCC  
 GCC**CGCATCGCC**

ATGTCGGTGCAGTTGTGTGTCAGCCGCGGCTGCCGCCAAGGTGCCTGAGGTGGAGCTGAAGGACCTGAGCC  
 CCTCCGAGGCGGAGTCGCAACTAGGACTGAGCACGGCCGCGTGGGCGCCATGGCCCCCGGCGGGCGG  
 TGGAGACCCTGAGGCTCCAGCTCCCGCCGCGGAGCGGCCCGGTCCCGGCCGGGCTCGGGGCCCGCC  
 GCCGCTCTCAGCCCCGCCGCGGAAGGTGCCTCAGGCGTCGGCCATGAAGCGGAGCGACCCACATCACC  
 AGCACCAGCGCACCGCGACGGCGGCGAGGCCCTGGTCAGCCCCGACGGCACCGTCACCGAGGCGCCGCG  
 CACAGTCAAGAAGCAGATCCAGTTTGTGACCAGAAGCAAGAATCAACAAACGTCCACCAAAATTGGA  
 CGTCGCTCTTTGTCTCGTTCCATTTCTCAGTCATCTACTGACAGCTACAGCTCAGCGGCTTCATATACAG  
 ATAGCTCTGATGATGAGACATCGCCAGGGACAAGCAGCAAAAGAACTCTAAGGGAAGCAGTGACTTCTG  
 TGTTAAGAACATCAAACAGGCAGAGTTTGGACGAAGAGAAATGAAATTGCTGAACAAGAAATGCCTGCA  
 TTGATGGCTTTGAGGAAGAGAGCTCAAGGAGAAAAGCCTTTGGCTGGAGCCAAAATCGTGGGTTGCACAC  
 ACATCACTGCTCAGACTGCTGTGCTTATGAAACTCTGGGTGCTCTGGGGGCCAGTGCCGATGGGCTGC  
 CTGCAACATCTATTCCACTCTCAATGAAGTGGCTGCTGCTTAGCAGAAAGTGGATTTTCTGTTTTTGGC  
 TGGAAAGGAGAGTCAAGAGATGACTTTTGGTGGTGTATCGATAGATGTGTGAATGTGGAGGGCTGGCAGC  
 CAAACATGATCTTGGATGATGGAGGGGATCTACCCACTGGATTTATAAAAAGTATCCCAACATGTTTAA  
 GAAAATCAAGGCATAGTAGAGGAGAGTGTACTGGAGTTCACAGGCTGTACCAACTGTCCAAAGCTGGG  
 AAGCTGTGTGTTCCAGCCATGAATGTCAATGACTCAGTCACCAACAGAAATTTGACAACCTCTACTGTT  
 GCCGTGAATCAATTCTTGTGACTTAAAAGGACAACAGACATGATGTTTGGTGGAAAGCAAGTGGTAGT  
 CTGTGGCTATGGAGAGGTGGGGAAGGGTGTGTGCTGCCCTGAAAGCCATGGGCTCCATTGTGTATGTA  
 ACTGAAATTGACCCCATCTGTGCCCTGCAAGCCTGTATGGATGGATTTGACTGGTGAATTAATGAGG  
 TCATCCGACAAGTGGACATTGTTATTACCTGTACAGGTAACAAGAATGTGGTAACACAGAGACTTGGGA  
 CCGTATGAAGAATAGCTGCATCGTTTGAACATGGGACATTCCAACACAGAGATTGACGTGGCGAGTCTG  
 CGGACACCAGAAGTACCTGGGAGCGAGTGAGATCTCAAGTTGACCATGTGATATGGCCTGATGGCAAGA  
 GGATAGTACTGCTGCGAGAGGGCCGCTGCTGAACCTTAGCTGCTCCACAGTGCCTACATTTGTGCTCTC  
 AATCACTGCTACTACTCAGGCTCTTGCCTTGATAGAGCTTACAATGCTCCTGAGGGTCGCTATAAGCAG  
 GATGTCTACCTGTGCCAAGAAGATGGATGAGTATGTGGCCAGCCTACACTGCCTACCTTTGATGCC  
 ACTTGACAGAGCTGACAGATGAACAGGCCAAGTATCTGGGACTCAACAAGAAATGGGCCCTCAAGCCTAA  
 TTACTACAGGTAT

**ACGCGT**ACGCGGCCGCTCGAGCAGAACTCATCTCAGAAGAGGATCTGGCAGCAATGATATCCTGGATT  
 ACAAGGATGACGACGATAAGGTTTAA

**Protein Sequence:**

>RC204540 protein sequence  
 Red=Cloning site Green=Tags(s)

MSVQVVSAAAAKVPEVELKDLSPSEAESQLGLSTAAVGAMAPPAGGGDPEAPAPAAERPPVPGPGSGPA  
 AALSPAAGKVPQASAMKRSDPHHQHQHRHRDGGREALVSPDGTVTEAPRTVKKQIQFADQKQEFNKRPTKIG  
 RRSLRSISQSSTDSYSSAASYTDSDDETSPPDKQKNSKSSDFCVKNIKQAEFGRREIEIAEQEMPA  
 LMALRKRAQGEKPLAGAKIVGCTHITAQTAVLMETL GALGAQCRWAACNIYSTLNEVAAAALAESGFPVFA  
 WKGESEDDFWWCIDRCVNVGEGWQPNMILDDGGDLTHWIYKKYPNMFKKIKGIVEESVTGVHRLYQLSKAG  
 KLCVPAAMNVNDSVTKQKFDNLYCCRESILDGLKRTTDMFGGKQVVVCGYGEVKGCCAALKAMGSIVYV  
 TEIDPICALQACMDGFRLVKLNEVIRQVDIVITCTGNKNVVTREHLDRMKNSCIVCNMGSNTEIDVASL  
 RTPELTWERVRSQVDHVIPDGKRIVLLAEGRLLNLSCTVPTFVLSITATTQALALIELYNAPEGRYKQ  
 DVYLLPKKMDEYVASLHLPFD AHL TEL TDEQAKYLGLNKNPFPKPNYYRY

**TR**TRPLEQKLISEEDLAANDILDYKDDDDKV

Chromatograms: [https://cdn.origene.com/chromatograms/mk6804\\_c08.zip](https://cdn.origene.com/chromatograms/mk6804_c08.zip)

Restriction Sites: SgfI-MluI

Cloning Scheme:



ACCN: NM\_015328

ORF Size: 1833 bp

OTI Disclaimer: The molecular sequence of this clone aligns with the gene accession number as a point of reference only. However, individual transcript sequences of the same gene can differ through naturally occurring variations (e.g. polymorphisms), each with its own valid existence. This clone is substantially in agreement with the reference, but a complete review of all prevailing variants is recommended prior to use. [More info](#)

OTI Annotation: This clone was engineered to express the complete ORF with an expression tag. Expression varies depending on the nature of the gene.

Components: The ORF clone is ion-exchange column purified and shipped in a 2D barcoded Matrix tube containing 10ug of transfection-ready, dried plasmid DNA (reconstitute with 100 ul of water).

Reconstitution Method:

1. Centrifuge at 5,000xg for 5min.
2. Carefully open the tube and add 100ul of sterile water to dissolve the DNA.
3. Close the tube and incubate for 10 minutes at room temperature.
4. Briefly vortex the tube and then do a quick spin (less than 5000xg) to concentrate the liquid at the bottom.
5. Store the suspended plasmid at -20°C. The DNA is stable for at least one year from date of shipping when stored at -20°C.

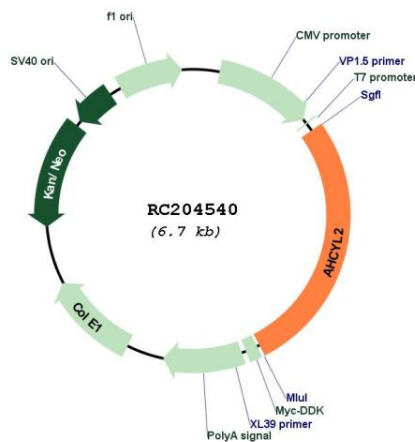
RefSeq: [NM\\_015328.4](#)

RefSeq Size: 5075 bp

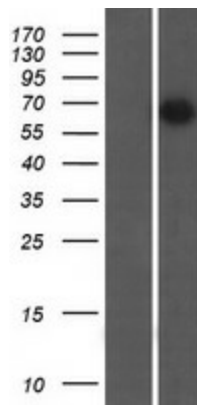
RefSeq ORF: 1836 bp

<b>Locus ID:</b>	23382
<b>UniProt ID:</b>	<a href="#">Q96HN2</a>
<b>Cytogenetics:</b>	7q32.1
<b>Domains:</b>	AdoHcyase
<b>Protein Families:</b>	Druggable Genome
<b>Protein Pathways:</b>	Cysteine and methionine metabolism, Metabolic pathways, Selenoamino acid metabolism
<b>MW:</b>	66.7 kDa
<b>Gene Summary:</b>	The protein encoded by this gene acts as a homotetramer and may be involved in the conversion of S-adenosyl-L-homocysteine to L-homocysteine and adenosine. Several transcript variants encoding different isoforms have been found for this gene. [provided by RefSeq, Jun 2011]

### Product images:



Circular map for RC204540



Western blot validation of overexpression lysate (Cat# [LY414625]) using anti-DDK antibody (Cat# [TA50011-100]). Left: Cell lysates from untransfected HEK293T cells; Right: Cell lysates from HEK293T cells transfected with RC204540 using transfection reagent MegaTran 2.0 (Cat# [TT210002]).