

## Product datasheet for **RC204539**

### TMED3 (NM\_007364) Human Tagged ORF Clone

#### Product data:

Product Type:	Expression Plasmids
Product Name:	TMED3 (NM_007364) Human Tagged ORF Clone
Tag:	Myc-DDK
Symbol:	TMED3
Synonyms:	C15orf22; P24B; p24g4; p24gamma4; p26
Mammalian Cell Selection:	Neomycin
Vector:	pCMV6-Entry (PS100001)
E. coli Selection:	Kanamycin (25 ug/mL)
ORF Nucleotide Sequence:	>RC204539 ORF sequence Red=Cloning site Blue=ORF Green=Tags(s)

TTTTGTAATACGACTCACTATAGGGCGGCCGGAATTCGTCGACTGGATCCGGTACCGAGGAGATCTGCCGCC**CGATCGCC**

ATGGGCAGCACTGTCCCGCGCTCCGCTCCGTGCTGCTTCTGCTGCTGCTCCTGCGCCGGGCCGAGCAGC  
CCTGCGGGGCCGAGCTCACCTTCGAGCTGCCGACAACGCCAAGCAGTGCTTCCACGAGGAGGTGGAGCA  
GGGCGTGAAGTTCTCCCTGGATTACCAGGTCATCACTGGAGGCCACTACGATGTTGACTGCTATGTAGAG  
GACCCCAGGGGAACACCATCTACAGAGAAACGAAGAAGCAGTACGACAGCTTCACGTACCGGGCTGAAG  
TCAAGGGCGTTTATCAGTTTGTCTCAGTAATGAGTTTTCCACCTTCTCTACAAGACCGTCTACTTTGA  
CTTTCAAGTGGGCGATGAGCCTCCATTCTCCCAGACATGGGGAACAGGGTCACAGCTCTCACCCAGATG  
GAGTCCGCTGCGTGACCATCCATGAGGCTCTGAAAACGGTGATTGACTCCCAGACGCATTACCGGCTGC  
GGGAGGCCAGGACCGGGCCGAGCGGAAGACCTTAATAGCCGAGTCTTACTGGTCTGTTGGCGAGAC  
GATTGCCCTGTTCTGTGTCAGCTTCAGTCAGGTGCTACTGTTGAAAAGCTTCTTCACAGAAAAACGACCC  
ATCAGCAGGGCAGTCCACTCC

**ACGCGT**ACGCGGGCCGCTCGAGCAGAACTCATCTCAGAAGAGGATCTGGCAGCAATGATATCCTGGATT  
ACAAGGATGACGACGATAAGGTTTAA



[View online »](#)

**Protein Sequence:** >RC204539 protein sequence  
Red=Cloning site Green=Tags(s)

MGSTVPRSASVLLLLLLLLRRAEQPCGAELTFELPDNAKQCFHEEVEQGVKFLSDYQVITGGHYDVCYVE  
 DPQNTIYRETKKQYDSFTYRAEVKGVYQFCFSNEFSTFSHKTVYFDQVGDPEPILPDMGNRVLTALQTM  
 ESACVTIHEALKTVIDSQTHYRLREAQDRARAEDLNSRVSYWSVGETIALFVVSFSQVLLLLKSFFTEKRP  
 ISRAVHS

TRTRPLEQKLISEEDLAANDILDYKDDDDKV

**Chromatograms:** [https://cdn.origene.com/chromatograms/mk6324\\_f05.zip](https://cdn.origene.com/chromatograms/mk6324_f05.zip)

**Restriction Sites:** SgfI-MluI

**Cloning Scheme:**



**ACCN:** NM\_007364

**ORF Size:** 651 bp

**OTI Disclaimer:** The molecular sequence of this clone aligns with the gene accession number as a point of reference only. However, individual transcript sequences of the same gene can differ through naturally occurring variations (e.g. polymorphisms), each with its own valid existence. This clone is substantially in agreement with the reference, but a complete review of all prevailing variants is recommended prior to use. [More info](#)

**OTI Annotation:** This clone was engineered to express the complete ORF with an expression tag. Expression varies depending on the nature of the gene.

**Components:** The ORF clone is ion-exchange column purified and shipped in a 2D barcoded Matrix tube containing 10ug of transfection-ready, dried plasmid DNA (reconstitute with 100 ul of water).

**Reconstitution Method:**

1. Centrifuge at 5,000xg for 5min.
2. Carefully open the tube and add 100ul of sterile water to dissolve the DNA.
3. Close the tube and incubate for 10 minutes at room temperature.
4. Briefly vortex the tube and then do a quick spin (less than 5000xg) to concentrate the liquid at the bottom.
5. Store the suspended plasmid at -20°C. The DNA is stable for at least one year from date of shipping when stored at -20°C.

**RefSeq:** [NM\\_007364.2](#), [NP\\_031390.1](#)

**RefSeq Size:** 1495 bp

**RefSeq ORF:** 654 bp

**Locus ID:** 23423

**UniProt ID:** [Q9Y3Q3](#)

**Cytogenetics:** 15q25.1

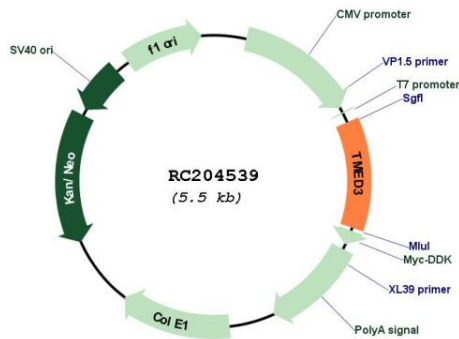
**Domains:** EMP24\_GP25L

**Protein Families:** Transmembrane

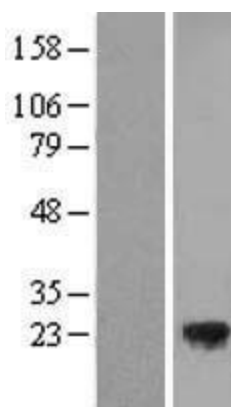
**MW:** 24.8 kDa

**Gene Summary:** Potential role in vesicular protein trafficking, mainly in the early secretory pathway. Contributes to the coupled localization of TMED2 and TMED10 in the cis-Golgi network. [UniProtKB/Swiss-Prot Function]

**Product images:**



Circular map for RC204539



Western blot validation of overexpression lysate (Cat# [LY416013]) using anti-DDK antibody (Cat# [TA50011-100]). Left: Cell lysates from untransfected HEK293T cells; Right: Cell lysates from HEK293T cells transfected with RC204539 using transfection reagent MegaTran 2.0 (Cat# [TT210002]).