

Product datasheet for RC204535

Neurotrophin 4 (NTF4) (NM_006179) Human Tagged ORF Clone

Product data:

Product Type: Expression Plasmids
Product Name: Neurotrophin 4 (NTF4) (NM_006179) Human Tagged ORF Clone
Tag: Myc-DDK
Symbol: Neurotrophin 4
Synonyms: GLC10; GLC10; NT-4; NT-4/5; NT-5; NT4; NT5; NTF5
Mammalian Cell Selection: Neomycin
Vector: pCMV6-Entry (PS100001)
E. coli Selection: Kanamycin (25 ug/mL)
ORF Nucleotide Sequence: >RC204535 ORF sequence
 Red=Cloning site Blue=ORF Green=Tags(s)

TTTTGTAATACGACTCACTATAGGGCGCCGGGAATTCGTCGACTGGATCCGGTACCGAGGAGATCTGCC
 GCC**CGATCGCC**

ATGCTCCCTCTCCCCTCATGCTCCCTCCCATCCTCCTCTTTCTCCTCCCCAGTGTGCCAATTGAGT
 CCCAACCCACCCTCAACATTGCCCTTTCTGGCCCTGAGTGGGACCTTCTCTCCCCCGAGTAGT
 CCTGTCTAGGGGTGCCCTGCTGGGCCCTCTGCTCTTCTGCTGGAGGCTGGGCTTTCTGGGAGTCA
 GCAGGTGCCCGCAACCGCAGCCGGCTGGGTGAGCGAACTGCACCAGCGAGTCGTCGGGGTGA
 TGCTGTGTGCGATGCAGTCAGTGGCTGGGTGACAGACCCTGGACCGCTGTGGACTTGCCTGGGCGCA
 GGTGGAGGTGTTGGGCGAGGTGCCTGCAGCTGGCGGCAGTCCCCTCCGCCAGTACTTCTTTGAAACCCGC
 TGCAAGGCTGATAACGCTGAGGAAGGTGGCCCGGGGCGAGGTGGAGGGGGCTGCCGGGAGTGGACAGGA
 GGCACTGGGTATCTGAGTGCAAGGCAAGCAGTCTATGTGCGGGCATTGACCGCTGATGCCAGGGCCG
 TGTGGGCTGGCGATGGATTCAATTGACTGCCTGCGTCTGCACACTCCTCAGCCGGACTGGCCGGCC

ACGCGTACGCGGCCGCTCGAGCAGAACTCATCTCAGAAGAGGATCTGGCAGCAATGATATCCTGGATT
 ACAAGGATGACGACGATAAGGTTTAA

Protein Sequence:

>RC204535 protein sequence
 Red=Cloning site Green=Tags(s)
 MLPLPSCSLPILLFLLPSVPIESQPPPSTLPPFLAPEWDLSPRVLSRGAPAGPPLLFLLEAGAFRES
 AGAPANRSRRGVSETAPASRRGELAVCDVSGWVTDRTAVDLRGREVEVLGEVPAAGGSPLRQYFFETR
 CKADNAEEGGPGAGGGGCRGVDRRHVWSECKAKQSYVRALTADAQGRVGRWIRIDTACVCTLLSRTGRA
TRTRPLEQKLISEEDLAANDILDYKDDDDKV



Chromatograms: https://cdn.origene.com/chromatograms/mk6304_d11.zip

Restriction Sites: SgfI-MluI

Cloning Scheme:



ACCN: NM_006179

ORF Size: 630 bp

OTI Disclaimer: The molecular sequence of this clone aligns with the gene accession number as a point of reference only. However, individual transcript sequences of the same gene can differ through naturally occurring variations (e.g. polymorphisms), each with its own valid existence. This clone is substantially in agreement with the reference, but a complete review of all prevailing variants is recommended prior to use. [More info](#)

OTI Annotation: This clone was engineered to express the complete ORF with an expression tag. Expression varies depending on the nature of the gene.

Components: The ORF clone is ion-exchange column purified and shipped in a 2D barcoded Matrix tube containing 10ug of transfection-ready, dried plasmid DNA (reconstitute with 100 ul of water).

Reconstitution Method:

1. Centrifuge at 5,000xg for 5min.
2. Carefully open the tube and add 100ul of sterile water to dissolve the DNA.
3. Close the tube and incubate for 10 minutes at room temperature.
4. Briefly vortex the tube and then do a quick spin (less than 5000xg) to concentrate the liquid at the bottom.
5. Store the suspended plasmid at -20°C. The DNA is stable for at least one year from date of shipping when stored at -20°C.

RefSeq: [NM_006179.4](#)

RefSeq Size: 999 bp

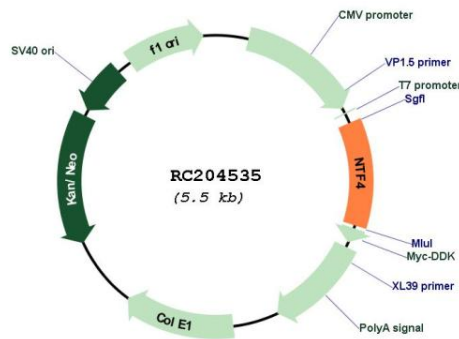
RefSeq ORF: 633 bp

Locus ID: 4909

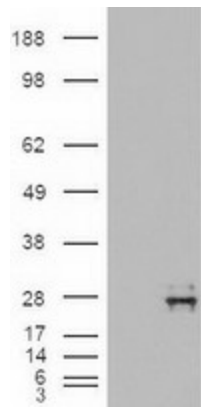
UniProt ID: [P34130](#)
Cytogenetics: 19q13.33
Protein Families: Druggable Genome, Secreted Protein
Protein Pathways: MAPK signaling pathway, Neurotrophin signaling pathway
MW: 22.4 kDa

Gene Summary: This gene is a member of a family of neurotrophic factors, neurotrophins, that control survival and differentiation of mammalian neurons. The expression of this gene is ubiquitous and less influenced by environmental signals. While knock-outs of other neurotrophins including nerve growth factor, brain-derived neurotrophic factor, and neurotrophin 3 prove lethal during early postnatal development, NTF5-deficient mice only show minor cellular deficits and develop normally to adulthood. [provided by RefSeq, Jul 2008]

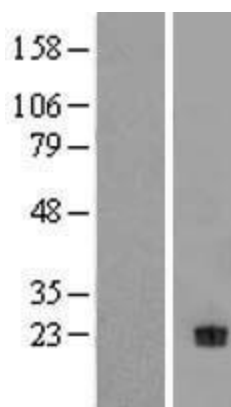
Product images:



Circular map for RC204535



HEK293T cells were transfected with the pCMV6-ENTRY control (Cat# [PS100001], Left lane) or pCMV6-ENTRY NTF4 (Cat# RC204535, Right lane) cDNA for 48 hrs and lysed. Equivalent amounts of cell lysates (5 ug per lane) were separated by SDS-PAGE and immunoblotted with anti-NTF4 (Cat# [TA500034]). Positive lysates [LY416817] (100ug) and [LC416817] (20ug) can be purchased separately from OriGene.



Western blot validation of overexpression lysate (Cat# [LY416817]) using anti-DDK antibody (Cat# [TA50011-100]). Left: Cell lysates from untransfected HEK293T cells; Right: Cell lysates from HEK293T cells transfected with RC204535 using transfection reagent MegaTran 2.0 (Cat# [TT210002]).