

## Product datasheet for **RC204534**

### FAM3D (NM\_138805) Human Tagged ORF Clone

#### Product data:

Product Type:	Expression Plasmids
Product Name:	FAM3D (NM_138805) Human Tagged ORF Clone
Tag:	Myc-DDK
Symbol:	FAM3D
Synonyms:	EF7; OIT1
Mammalian Cell Selection:	Neomycin
Vector:	pCMV6-Entry (PS100001)
E. coli Selection:	Kanamycin (25 ug/mL)
ORF Nucleotide Sequence:	>RC204534 ORF sequence Red=Cloning site Blue=ORF Green=Tags(s)

TTTTGTAATACGACTCACTATAGGGCGGCCGGAATTCGTCGACTGGATCCGGTACCGAGGAGATCTGCC  
GCC**CGATCGCC**

ATGAGAGTGTGAGGTGTGCTTCGCCTCCTGGCCCTCATCTTTGCCATAGTCACGACATGGATGTTTATTC  
GAAGCTACATGAGCTTCAGCATGAAAACCATCCGTCTGCCACGCTGGCTGGCAGCCTCGCCACCAAGGA  
GATCCAGGTTAAAAAGTACAAGTGTGGCCTCATCAAGCCCTGCCAGCCAACTACTTTGCGTTTAAATC  
TGCAGTGGGGCCCAACGTCGTGGCCCTACTATGTGCTTTGAAGACCGCATGATCATGAGTCTGTGA  
AAAACAATGTGGGCAGAGGCCTAAACATCGCCCTGGTGAATGGAACACGGGAGCTGTGCTGGGACAGAA  
GGCATTGACATGACTCTGGAGATGTTATGCACCTAGTAAATTCCTTAAAGAAATTCGGGGGGTGCA  
CTGGTGTGTTGGCCTCCTACGACGATCCAGGGACCAAAATGAACGATGAAAGCAGGAAACTCTTCTCTG  
ACTTGGGGAGTTCCTACGAAAACAAGTGGCTTCCGGGACAGCTGGGTCTTCATAGGAGCCAAAGACCT  
CAGGGGTAAAAGCCCCTTTGAGCAGTCTTAAAGAACAGCCAGACACAAACAAATACGAGGGATGGCCA  
GAGCTGCTGGAGATGGAGGGCTGCATGCCCCGAAGCCATTT

**ACGCGT**ACGCGGGCGCTCGAGCAGAAACTCATCTCAGAAGAGGATCTGGCAGCAAATGATATCTGGATT  
ACAAGGATGACGACGATAAGGTTTAA



[View online »](#)

**Protein Sequence:** >RC204534 protein sequence  
Red=Cloning site Green=Tags(s)

MRVSGVLRLLALIFAIVTTWMFIRSYSFSMKTIRLPRWLAASPTKEIQVKYKCGLIKPCPANYFAFKI  
 CSGAANVVGPTMCFEDRMIMSPVKNVGRGLNIALVNGTTGAVLGQKAFDMYSGDVMHLVKFLKEIPGGA  
 LVLVASYDDPGTKMNDESRLKLSDLGSSYAKQLGFRDSWVFIGAKDLRGKSPFEQFLKNSPDTNKYEGWP  
 ELLEMEGCMPPKPF

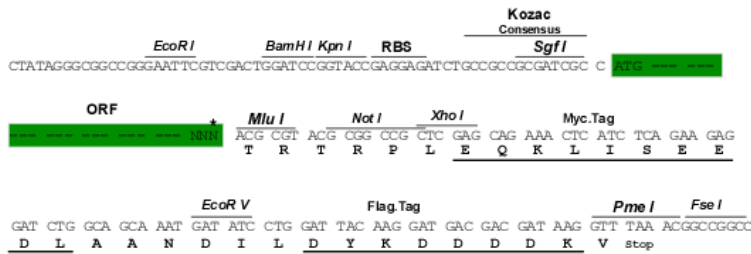
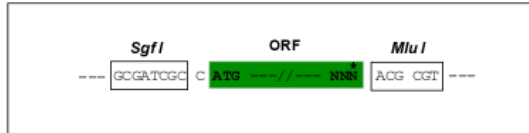
TRTRPLEQKLISEEDLAANDILDYKDDDDKV

**Chromatograms:** [https://cdn.origene.com/chromatograms/mk6792\\_a10.zip](https://cdn.origene.com/chromatograms/mk6792_a10.zip)

**Restriction Sites:** SgfI-MluI

**Cloning Scheme:**

Cloning sites used for ORF Shuttling:



\* The last codon before the Stop codon of the ORF

**ACCN:** NM\_138805

**ORF Size:** 672 bp

**OTI Disclaimer:** The molecular sequence of this clone aligns with the gene accession number as a point of reference only. However, individual transcript sequences of the same gene can differ through naturally occurring variations (e.g. polymorphisms), each with its own valid existence. This clone is substantially in agreement with the reference, but a complete review of all prevailing variants is recommended prior to use. [More info](#)

**OTI Annotation:** This clone was engineered to express the complete ORF with an expression tag. Expression varies depending on the nature of the gene.

**Components:** The ORF clone is ion-exchange column purified and shipped in a 2D barcoded Matrix tube containing 10ug of transfection-ready, dried plasmid DNA (reconstitute with 100 ul of water).

**Reconstitution Method:**

1. Centrifuge at 5,000xg for 5min.
2. Carefully open the tube and add 100ul of sterile water to dissolve the DNA.
3. Close the tube and incubate for 10 minutes at room temperature.
4. Briefly vortex the tube and then do a quick spin (less than 5000xg) to concentrate the liquid at the bottom.
5. Store the suspended plasmid at -20°C. The DNA is stable for at least one year from date of shipping when stored at -20°C.

**RefSeq:** [NM\\_138805.3](#)

**RefSeq Size:** 1322 bp

**RefSeq ORF:** 675 bp

**Locus ID:** 131177

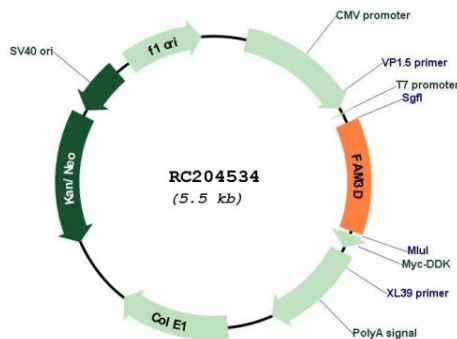
**UniProt ID:** [Q96BQ1](#)

**Cytogenetics:** 3p14.2

**Protein Families:** Secreted Protein, Transmembrane

**MW:** 25 kDa

**Product images:**



Circular map for RC204534