

Product datasheet for RC204532

WDR77 (NM_024102) Human Tagged ORF Clone

Product data:

Product Type:	Expression Plasmids
Product Name:	WDR77 (NM_024102) Human Tagged ORF Clone
Tag:	Myc-DDK
Symbol:	WDR77
Synonyms:	HKMT1069; MEP-50; MEP50; Nbla10071; p44; p44/Mep50
Mammalian Cell Selection:	Neomycin
Vector:	pCMV6-Entry (PS100001)
E. coli Selection:	Kanamycin (25 ug/mL)
ORF Nucleotide Sequence:	>RC204532 ORF sequence Red=Cloning site Blue=ORF Green=Tags(s)

TTTTGTAATACGACTCACTATAGGGCGGCCGGAATTCGTCGACTGGATCCGGTACCGAGGAGATCTGCC
GCC**CGATCGC**C

ATGCGGAAGGAAACCCACCCCTAGTGCCCCGGCGCCGGGAGTGAATCTTCCCCAAATGCGC
CCGCTGCATGGAACGGCAGTTGGAGGCTGCGCGGTACCGGTCCGATGGGGCGTTCTCCTCGGGCCTC
CAGCCTGAGTGGGCGCTGCTGGCCGGCTCCCTCTGGCTTTTTAAGGACCCTGTGCCGCCCAACGAA
GGCTTCTGCTCCGCCGGAGTCAAACGGAGGCTGGAGTGGCTGACCTCACTTGGGTGGGAGAGAGGTA
TTCTAGTGGCCTCCGATTCAGGTGCTGTTGAATTGTGGAACTAGATGAGAATGAGACACTTATTGTCAG
CAAGTTCTGCAAGTATGAGCATGATGACATTGTGTCTACAGTCAGTGTCTTGAGCTCTGGCACACAAGCT
GTCAGTGGTAGCAAAGACATCTGCATCAAGTTTGGGACCTTGCTCAGCAGGTGGTACTGAGTTCATAACC
GAGCTCATGCTGCTCAGGTCACTTGTGTTGCTGCCTCTCCTCACAAGGACTCTGTGTTTCTTTCATGCGAG
CGAGGACAATAGAATTTACTCTGGGATACCCGCTGTCCCAAGCCAGCATCACAGATTGGCTGCAGTGGC
CCTGGCTACCTTCTACCTCGCTGGCTTGGCATCCTCAGCAAAGTGAAGTCTTTGTCTTTGGTGATGAGA
ATGGGACAGTCTCCCTTGTGGACACCAAGAGTACAAGCTGTGTCTGAGCTCAGCTGTACTCCAGTG
TGCTACTGGGCTGGTGTCTCCACACAGTGTCCCTTCTGGCCTCTCTCAGTGAAGACTGCTCACTT
GCTGTGCTGGACTCAAGCCTTTCTGAGTTGTTTGAAGCCAAGCCACAGAGACTTGTGAGAGATGCCA
CTTGGTCCCGCTCAATCACTCCCTGTTACCACAGTGGGCTGGGACCATCAGGTCGTCCACCACGTTGT
GCCACAGAACCTCTCCAGCCCTGGACCTGCAAGTGTACTGAG

ACGCGTACGCGGCCGCTCGAGCAGAAACTCATCTCAGAAGAGGATCTGGCAGCAAATGATATCCTGGATT
ACAAGGATGACGACGATAAGGTTTAA



[View online »](#)

Protein Sequence: >RC204532 protein sequence
Red=Cloning site Green=Tags(s)

MRKETPPPLVPPAAREWNLPPNAPACMERQLEAARYRSDGALLL GASSL SGRCWAGSLWLFKDPCAAPNE
 GFCSAGVQTEAGVADL TWVGERGILVASDSGAVELWELDENETLIVSKFCKYEHDDIVSTVSVLSSGTQA
 VSGKDIKIKVWDLAQQVVLSSYRAHAAQVTCVAASPHKDSVFLSCSEDNRILLWDRTRCPKPAQIGCSA
 PGYLPTSLAWHPQQSEVVFVGDENGTVSLVDTKSTSCVLS SAVHSQCVTGLVFSPHSVPFLLASLSEDCSL
 AVL DSSSELFRSQAHRDFVRDATWSPLNHSLLTTVGWDHQVVHVVVPTTEPLPAPGPASVTE

TRTRPLEQKLISEEDLAANDILDYKDDDDKV

Chromatograms: https://cdn.origene.com/chromatograms/mk6305_d07.zip

Restriction Sites: SgfI-MluI

Cloning Scheme:

Cloning sites used for ORF Shuttling:



* The last codon before the Stop codon of the ORF

ACCN: NM_024102

ORF Size: 1026 bp

OTI Disclaimer: The molecular sequence of this clone aligns with the gene accession number as a point of reference only. However, individual transcript sequences of the same gene can differ through naturally occurring variations (e.g. polymorphisms), each with its own valid existence. This clone is substantially in agreement with the reference, but a complete review of all prevailing variants is recommended prior to use. [More info](#)

OTI Annotation: This clone was engineered to express the complete ORF with an expression tag. Expression varies depending on the nature of the gene.

Components: The ORF clone is ion-exchange column purified and shipped in a 2D barcoded Matrix tube containing 10ug of transfection-ready, dried plasmid DNA (reconstitute with 100 ul of water).

Reconstitution Method:

1. Centrifuge at 5,000xg for 5min.
2. Carefully open the tube and add 100ul of sterile water to dissolve the DNA.
3. Close the tube and incubate for 10 minutes at room temperature.
4. Briefly vortex the tube and then do a quick spin (less than 5000xg) to concentrate the liquid at the bottom.
5. Store the suspended plasmid at -20°C. The DNA is stable for at least one year from date of shipping when stored at -20°C.

RefSeq: [NM_024102.4](#)

RefSeq Size: 2428 bp

RefSeq ORF: 1029 bp

Locus ID: 79084

UniProt ID: [Q9BQA1](#)

Cytogenetics: 1p13.2

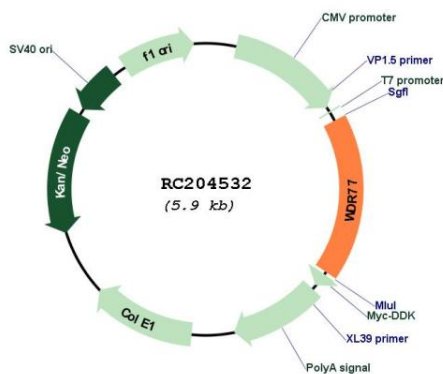
Domains: WD40

Protein Families: Stem cell - Pluripotency

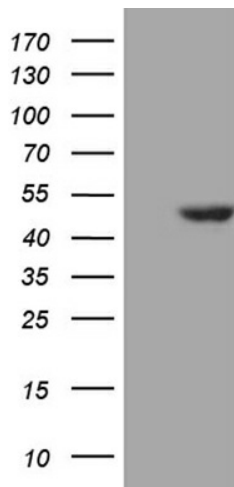
MW: 36.7 kDa

Gene Summary: The protein encoded by this gene is an androgen receptor coactivator that forms a complex with protein arginine methyltransferase 5, which modifies specific arginines to dimethylarginines in several spliceosomal Sm proteins. The encoded protein may be involved in the early stages of prostate cancer, with most of the protein being nuclear-localized in benign cells but cytoplasmic in cancer cells. Several transcript variants encoding different isoforms have been found for this gene. [provided by RefSeq, Nov 2015]

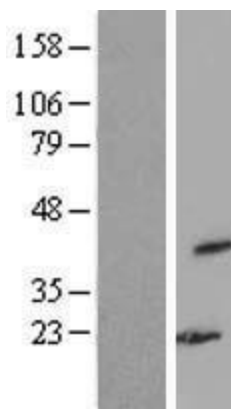
Product images:



Circular map for RC204532



HEK293T cells were transfected with the pCMV6-ENTRY control (Cat# [PS100001], Left lane) or pCMV6-ENTRY WDR77 (Cat# RC204532, Right lane) cDNA for 48 hrs and lysed. Equivalent amounts of cell lysates (5 ug per lane) were separated by SDS-PAGE and immunoblotted with anti-WDR77 (Cat# [TA809827])(1:500). Positive lysates [LY411336] (100ug) and [LC411336] (20ug) can be purchased separately from OriGene.



Western blot validation of overexpression lysate (Cat# [LY411336]) using anti-DDK antibody (Cat# [TA50011-100]). Left: Cell lysates from untransfected HEK293T cells; Right: Cell lysates from HEK293T cells transfected with RC204532 using transfection reagent MegaTran 2.0 (Cat# [TT210002]).