

## Product datasheet for RC204527

### SERBP1 (NM\_001018068) Human Tagged ORF Clone

#### Product data:

Product Type:	Expression Plasmids
Product Name:	SERBP1 (NM_001018068) Human Tagged ORF Clone
Tag:	Myc-DDK
Symbol:	SERBP1
Synonyms:	CGI-55; CHD3IP; HABP4L; PAI-RBP1; PAIRBP1
Mammalian Cell Selection:	Neomycin
Vector:	pCMV6-Entry (PS100001)
E. coli Selection:	Kanamycin (25 ug/mL)
ORF Nucleotide Sequence:	>RC204527 ORF sequence Red=Cloning site Blue=ORF Green=Tags(s)

TTTTGTAATACGACTCACTATAGGGCGGCCGGAATTCGTCGACTGGATCCGGTACCGAGGAGATCTGCC  
GCC**CGATCGCC**

ATGCTGGGCACTTACAGGAAGGCTTCGGCTGCGTGGTACCAACCGATTGACCAAGTTATTTGACGACG  
AATCGGACCCCTTCGAGGTGCTGAAGGCAGCAGAGAACAAGAAAAAGAAGCCGGCGGGGGCGGCTTGG  
GGGCCCTGGGGCAAGAGCGCAGCTCAGGCCGGCCAGACCAACTCCAACGGCGCAGGCAAACAGCTG  
CGCAAGGAGTCCCAGAAAGACCCGAAGAACCCTGCCCCCAGCGTTGGCGTGGTTGACAAGAAAGAGG  
AGACGCAGCCGCCGTGGCGCTTAAGAAAGAAGGAATAAGACGAGTTGGAAGAAGACCTGATCAACAACT  
TCAGGGTGAAGGAAAATAATTGATAGAAAGACCAGAAAGGCGACCACCTCGTGAACGAAGATTGAAAAAG  
CCACTTGAAGAAAAGGTGAAGGAGCGAATTTTCAGTTGATAGACCGATTATTGACCGACCTATTTCGAG  
GTCGTGGTGGTCTTGAAGAGGTGAGGGGGCCGTGGACGTGGAATGGGCCGAGGAGATGGATTTGATTC  
TCGTGGCAAACGTGAATTTGATAGGCATAGTGAAGTGATAGATCTGGCCTGAAGCACGAGGACAAACGT  
GGAGGTAGCGGATCTCACAACCTGGGAACTGTCAAAGACGAATTAACAGAGTCCCCAAATACATTGAGA  
AACAAATATCTTATAATTACAGTGACTTGGATCAATCAATGTGACTGAGGAAACACCTGAAGGTGAAGA  
ACATCATCCAGTGGCAGACACTGAAAATAAGGAGAATGAAGTTGAAGAGGTAAAAGAGGAGGGTCCAAAA  
GAGATGACTTTGGATGAGTGAAGGCTATTCAAATAAGGACCGGCAAAAGTGAATTTAATATCCGAA  
AACCAAAATGAAGGTGCTGATGGGCAGTGAAGAAGGGATTTGTTCTTCATAAATCAAGAGTGAAGAGGC  
TCATGCTGAAGATTTCGGTTATGGACCATATTTCCGGAAGCCAGCAAATGATATAACGTCTCAGCTGGAG  
ATCAATTTTGGAGACCTTGGCCGCCAGGACGTGGCGGCAGGGGAGGACGAGGTGGACGTGGGCGTGGT  
GGCGCCAAACCGTGGCAGCAGGACCGACAAGTCAAGTGCTTCTGCTCCTGATGTGGATGACCCAGAGGC  
ATTCCAGCTCTGGCT

**ACGCGT**ACGCGGCCGCTCGAGCAGAAACTCATCTCAGAAGAGGATCTGGCAGCAAATGATATCCTGGATT  
ACAAGGATGACGACGATAAGGTTTAA



[View online »](#)

**Protein Sequence:** >RC204527 protein sequence  
Red=Cloning site Green=Tags(s)

MPGHLQEGFGCVVTNRFDQLFDDESDPFEVLKAAENKKKEAGGGGVGPGAKSAAQAAAQTNSNAAGKQL  
 RKESQKDRKNLPPSVGVVDKKEETQPPVALKKEGIRRVGRRPDQQLQEGEKIIDRRPERRPPRERRFEK  
 PLEEKEGEGEFSVDRPIIDRPIRGRGGLGRGRGGRGMGRGDGFD SRGKREFDRHSGSDRSGLKHEDKR  
 GSGSHNWGTVKDEL TESP KYIQKQISYNYSDLDQSNVTEETPEGEEHHPVADTENKENEVEEVKEEGPK  
 EMTLDEWKAIQNKDRAKVEFNIRKPNEGADGQWKGFVLHKSKSEEHAEDSVMDHHFRKPPANDITSQLE  
 INFGLGRPGRGGRGGRGGRGGRPNRGRSRTDKSSASAPDVDDPEAFPALA

TRTRPLEQKLISEEDLAANDILDYKDDDDKV

**Chromatograms:** [https://cdn.origene.com/chromatograms/mk6305\\_h07.zip](https://cdn.origene.com/chromatograms/mk6305_h07.zip)

**Restriction Sites:** SgfI-MluI

**Cloning Scheme:**



\* The last codon before the Stop codon of the ORF

**ACCN:** NM\_001018068

**ORF Size:** 1206 bp

**OTI Disclaimer:** The molecular sequence of this clone aligns with the gene accession number as a point of reference only. However, individual transcript sequences of the same gene can differ through naturally occurring variations (e.g. polymorphisms), each with its own valid existence. This clone is substantially in agreement with the reference, but a complete review of all prevailing variants is recommended prior to use. [More info](#)

**OTI Annotation:** This clone was engineered to express the complete ORF with an expression tag. Expression varies depending on the nature of the gene.

**Components:** The ORF clone is ion-exchange column purified and shipped in a 2D barcoded Matrix tube containing 10ug of transfection-ready, dried plasmid DNA (reconstitute with 100 ul of water).

**Reconstitution Method:**

1. Centrifuge at 5,000xg for 5min.
2. Carefully open the tube and add 100ul of sterile water to dissolve the DNA.
3. Close the tube and incubate for 10 minutes at room temperature.
4. Briefly vortex the tube and then do a quick spin (less than 5000xg) to concentrate the liquid at the bottom.
5. Store the suspended plasmid at -20°C. The DNA is stable for at least one year from date of shipping when stored at -20°C.

**RefSeq:** [NM\\_001018068.2](#)

**RefSeq Size:** 6746 bp

**RefSeq ORF:** 1209 bp

**Locus ID:** 26135

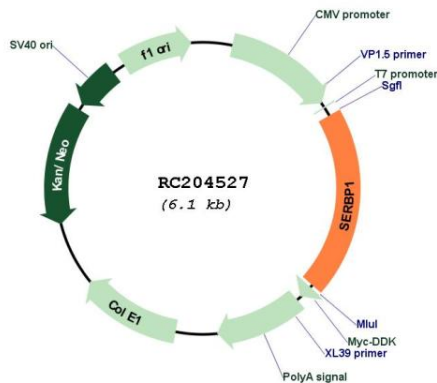
**UniProt ID:** [Q8NC51](#)

**Cytogenetics:** 1p31.3

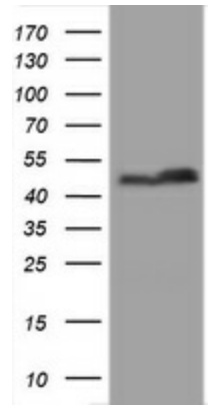
**MW:** 44.3 kDa

**Gene Summary:** May play a role in the regulation of mRNA stability. Binds to the 3'-most 134 nt of the SERPINE1/PAI1 mRNA, a region which confers cyclic nucleotide regulation of message decay. Seems to play a role in PML-nuclear bodies formation (PubMed:28695742).[UniProtKB/Swiss-Prot Function]

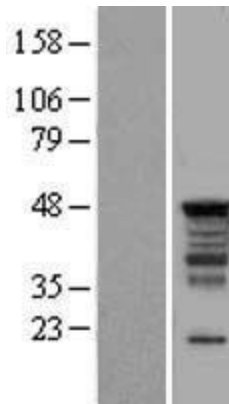
**Product images:**



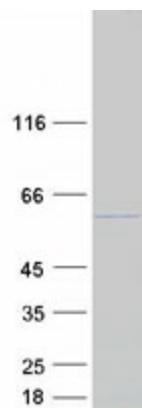
Circular map for RC204527



HEK293T cells were transfected with the pCMV6-ENTRY control (Cat# [PS100001], Left lane) or pCMV6-ENTRY SERBP1 (Cat# RC204527, Right lane) cDNA for 48 hrs and lysed. Equivalent amounts of cell lysates (5 ug per lane) were separated by SDS-PAGE and immunoblotted with anti-SERBP1 (Cat# [TA800707]). Positive lysates [LY422719] (100ug) and [LC422719] (20ug) can be purchased separately from OriGene.



Western blot validation of overexpression lysate (Cat# [LY422719]) using anti-DDK antibody (Cat# [TA50011-100]). Left: Cell lysates from untransfected HEK293T cells; Right: Cell lysates from HEK293T cells transfected with RC204527 using transfection reagent MegaTran 2.0 (Cat# [TT210002]).



Coomassie blue staining of purified SERBP1 protein (Cat# [TP304527]). The protein was produced from HEK293T cells transfected with SERBP1 cDNA clone (Cat# RC204527) using MegaTran 2.0 (Cat# [TT210002]).