

Product datasheet for **RC204524**

CTRP6 (C1QTNF6) (NM_031910) Human Tagged ORF Clone

Product data:

Product Type:	Expression Plasmids
Product Name:	CTRP6 (C1QTNF6) (NM_031910) Human Tagged ORF Clone
Tag:	Myc-DDK
Symbol:	CTRP6
Synonyms:	CTFP6; CTRP6; ZACRP6
Mammalian Cell Selection:	Neomycin
Vector:	pCMV6-Entry (PS100001)
E. coli Selection:	Kanamycin (25 ug/mL)
ORF Nucleotide Sequence:	>RC204524 ORF sequence Red=Cloning site Blue=ORF Green=Tags(s)

TTTTGTAATACGACTCACTATAGGGCGCCGGGAATTCGTCGACTGGATCCGGTACCGAGGAGATCTGCC
GCC**CGGATCGCC**

ATGCAGTGGCTCAGGGTCCGTGAGTCGCCTGGGGAGGCCACAGGACACAGGGTCACCATGGTGACAGCCG
CCCTGGGTCCCGTCTGGGCAGCGCTCCTGCTCTTTCTCCTGATGTGTGAGATCCCTATGGTGAGCTCAC
CTTTGACAGAGCTGTGGCCAGCGGCTGCCAACGGTGTGACTCTGAGGACCCCTGGATCCTGCCCAT
GTATCCTCAGCCTCTTCTCCGGCCGCCCCACGCCCTGCCTGAGATCAGACCCTACATTAATATACCA
TCCTGAAGGGTGACAAAGGGGACCCAGGCCAATGGGCCTGCCAGGTACATGGGCAGGGAGGGTCCCCA
AGGGGAGCCTGGCCCTCAGGGCAGCAAGGGTGACAAGGGGGAGATGGGCAGCCCCGGCGCCCCGTGCCAG
AAGCGCTTCTTCGCCTTCTCAGTGGGCCGAAGACGGCCCTGCACAGCGCGAGGACTTCCAGACTGC
TCTTCGAAAGGGTCTTTGTGAACCTTGATGGGTGCTTTGACATGGCGACCGGCCAGTTTGTGCTCCCT
GCGTGGCATCTACTTCTCAGCCTCAATGTGCACAGCTGGAATTACAAGGAGACGTACGTGCACATTATG
CATAACCAGAAAGAGGCTGTATCCTGTACGCGCAGCCCAGCGAGCGCAGCATCATGCAGAGCCAGAGTG
TGATGCTGGACCTGGCCTACGGGACCGCGTCTGGGTGCGGCTCTTAAGCGCCAGCGGAGAACGCCAT
CTACAGCAACGACTTCGACACCTACATCACCTTCAGCGCCACCTCATCAAGCCGAGGACGAC

ACGCGTACGCGGCCGCTCGAGCAGAAACTCATCTCAGAAGAGGATCTGGCAGCAAATGATATCCTGGATT
ACAAGGATGACGACGATAAGGTTTAA



[View online »](#)

Protein Sequence: >RC204524 protein sequence
Red=Cloning site Green=Tags(s)

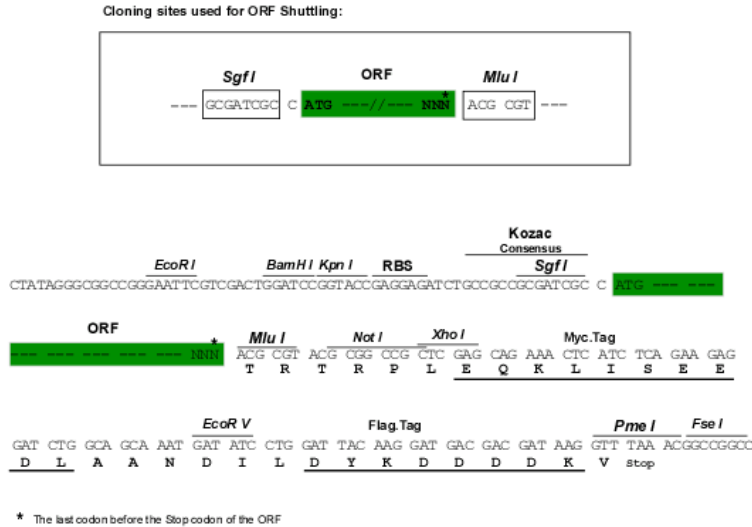
MQWLRVRESPGEATGHRVTMVTAAALGPVWAALLFLLMCEIPMVELTFDRAVASGCQRCCDSEDPLDPAH
VSSASSSRPHALPEIRPYINITILKGDKGDPGPMGLPGYMGREGPQGEPPQGSKGDKGEMGSPGAPCQ
KRFFAFSVGRKTALHSGEDFQTLLEFRVFNLDGCFDMATGQFAAPLRGIYFFSLNVHSWNYKETYVHIM
HNQKEAVILYAQPSESRIMQSQSVMLDLAYGDRVWVRLFKRQRENAIYSNDFDTYITFSGHLIKAEDD

TRTRPLEQKLISEEDLAANDILDYKDDDDKV

Chromatograms: https://cdn.origene.com/chromatograms/mk6010_h07.zip

Restriction Sites: SgfI-MluI

Cloning Scheme:



ACCN: NM_031910

ORF Size: 834 bp

OTI Disclaimer: The molecular sequence of this clone aligns with the gene accession number as a point of reference only. However, individual transcript sequences of the same gene can differ through naturally occurring variations (e.g. polymorphisms), each with its own valid existence. This clone is substantially in agreement with the reference, but a complete review of all prevailing variants is recommended prior to use. [More info](#)

OTI Annotation: This clone was engineered to express the complete ORF with an expression tag. Expression varies depending on the nature of the gene.

Components: The ORF clone is ion-exchange column purified and shipped in a 2D barcoded Matrix tube containing 10ug of transfection-ready, dried plasmid DNA (reconstitute with 100 ul of water).

Reconstitution Method:

1. Centrifuge at 5,000xg for 5min.
2. Carefully open the tube and add 100ul of sterile water to dissolve the DNA.
3. Close the tube and incubate for 10 minutes at room temperature.
4. Briefly vortex the tube and then do a quick spin (less than 5000xg) to concentrate the liquid at the bottom.
5. Store the suspended plasmid at -20°C. The DNA is stable for at least one year from date of shipping when stored at -20°C.

RefSeq: [NM_031910.2](#)

RefSeq Size: 2954 bp

RefSeq ORF: 837 bp

Locus ID: 114904

UniProt ID: [Q9BXI9](#)

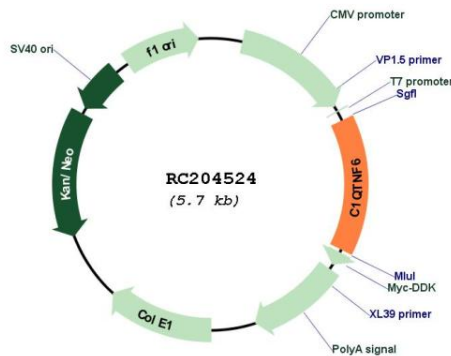
Cytogenetics: 22q12.3

Domains: C1Q

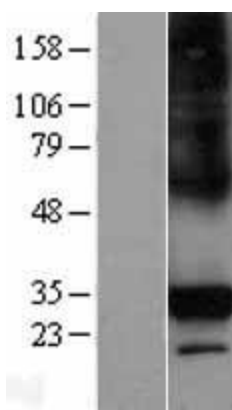
Protein Families: Secreted Protein, Transmembrane

MW: 30.9 kDa

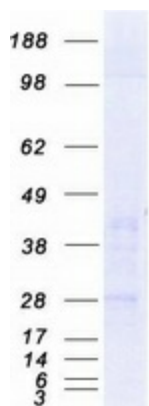
Product images:



Circular map for RC204524



Western blot validation of overexpression lysate (Cat# [LY403130]) using anti-DDK antibody (Cat# [TA50011-100]). Left: Cell lysates from untransfected HEK293T cells; Right: Cell lysates from HEK293T cells transfected with RC204524 using transfection reagent MegaTran 2.0 (Cat# [TT210002]).



Coomassie blue staining of purified C1QTNF6 protein (Cat# [TP304524]). The protein was produced from HEK293T cells transfected with C1QTNF6 cDNA clone (Cat# RC204524) using MegaTran 2.0 (Cat# [TT210002]).