

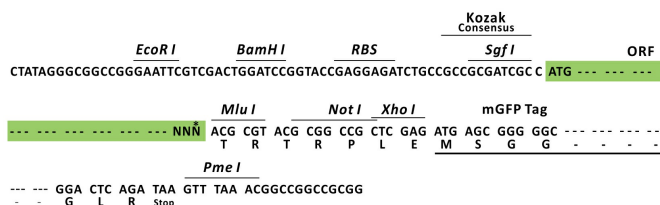
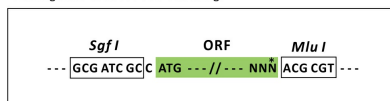
## Product datasheet for RC204521L2

### Elongation of very long chain fatty acids protein 3 (ELOVL3) (NM\_152310) Human Tagged Lenti ORF Clone

#### Product data:

Product Type:	Expression Plasmids
Product Name:	Elongation of very long chain fatty acids protein 3 (ELOVL3) (NM_152310) Human Tagged Lenti ORF Clone
Tag:	mGFP
Symbol:	Elongation of very long chain fatty acids protein 3
Synonyms:	CIG-30; CIG30
Mammalian Cell Selection:	None
Vector:	pLenti-C-mGFP (PS100071)
E. coli Selection:	Chloramphenicol (34 ug/mL)
ORF Nucleotide Sequence:	The ORF insert of this clone is exactly the same as(RC204521).
Restriction Sites:	SgfI-MluI
Cloning Scheme:	

Cloning sites used for ORF Shuttling:



\* The last codon before the Stop codon of the ORF.

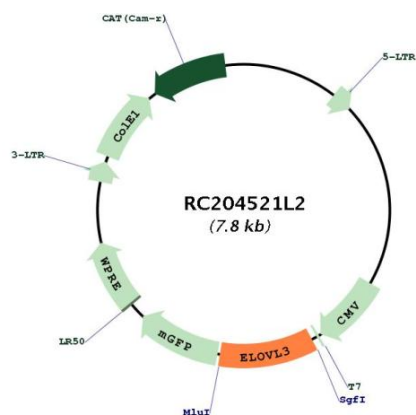
ACCN: NM\_152310



[View online »](#)

<b>ORF Size:</b>	810 bp
<b>OTI Disclaimer:</b>	The molecular sequence of this clone aligns with the gene accession number as a point of reference only. However, individual transcript sequences of the same gene can differ through naturally occurring variations (e.g. polymorphisms), each with its own valid existence. This clone is substantially in agreement with the reference, but a complete review of all prevailing variants is recommended prior to use. <a href="#">More info</a>
<b>OTI Annotation:</b>	This clone was engineered to express the complete ORF with an expression tag. Expression varies depending on the nature of the gene.
<b>Components:</b>	The ORF clone is ion-exchange column purified and shipped in a 2D barcoded Matrix tube containing 10ug of transfection-ready, dried plasmid DNA (reconstitute with 100 ul of water).
<b>Reconstitution Method:</b>	<ol style="list-style-type: none"> <li>1. Centrifuge at 5,000xg for 5min.</li> <li>2. Carefully open the tube and add 100ul of sterile water to dissolve the DNA.</li> <li>3. Close the tube and incubate for 10 minutes at room temperature.</li> <li>4. Briefly vortex the tube and then do a quick spin (less than 5000xg) to concentrate the liquid at the bottom.</li> <li>5. Store the suspended plasmid at -20°C. The DNA is stable for at least one year from date of shipping when stored at -20°C.</li> </ol>
<b>RefSeq:</b>	<a href="#">NM_152310.1</a>
<b>RefSeq Size:</b>	1455 bp
<b>RefSeq ORF:</b>	813 bp
<b>Locus ID:</b>	83401
<b>UniProt ID:</b>	<a href="#">Q9HB03</a>
<b>Cytogenetics:</b>	10q24.32
<b>Protein Families:</b>	Transmembrane
<b>MW:</b>	31.5 kDa
<b>Gene Summary:</b>	This gene encodes a protein that belongs to the GNS1/SUR4 family. Members of this family play a role in elongation of long chain fatty acids to provide precursors for synthesis of sphingolipids and ceramides. [provided by RefSeq, Jul 2013]

## Product images:



Circular map for RC204521L2