

Product datasheet for RC204519

YIPF6 (NM_173834) Human Tagged ORF Clone

Product data:

| | |
|---------------------------|---|
| Product Type: | Expression Plasmids |
| Product Name: | YIPF6 (NM_173834) Human Tagged ORF Clone |
| Tag: | Myc-DDK |
| Symbol: | YIPF6 |
| Synonyms: | FinGER6 |
| Mammalian Cell Selection: | Neomycin |
| Vector: | pCMV6-Entry (PS100001) |
| E. coli Selection: | Kanamycin (25 ug/mL) |
| ORF Nucleotide Sequence: | >RC204519 ORF sequence Red=Cloning site Blue=ORF Green=Tags(s) |

TTTTGTAATACGACTCACTATAGGGCGGCCGGAATTCGTCGACTGGATCCGGTACCGAGGAGATCTGCC
GCC**CGATCGCC**

ATGGCGGAAGCGGAGGAGTCTCCAGGAGACCCGGGACAGCATCGCCAGGCCCTGTTTGCAGGCCTTT
CAGATATATCCATCTCACAAGACATCCCCGTAGAAGGAGAAATCACCATTCTATGAGATCTCGCATCCG
GGAGTTTGACAGCTCCACATTAATGAATCTGTTTCGCAATACCATCATGCGTGATCTAAAAGCTGTTGGG
AAAAAATTCATGCATGTTTTGTACCCAAGAAAAGTAATACTCTTTTGAGAGATTGGGATTTGTGGGGCC
CTTTGATCCTTTGTGTGACTCGCATTAAATGCTGCAAAGAGACTCTGCAGATAGTAAAAAGATGGAGG
GCCCAATTTGCAGAGGTGTTTGTATTGCTGGTTTGGTGCAGTTACCATCACCCCTCAACTCAAACTT
CTTGAGGGAACATATCTTTTTTTCAGAGCCTCTGTGTGCTGGTTACTGTATACTTCCCTTGACAGTAG
CAATGCTGATTTGCCGGCTGGTACTTTTGGCTGATCCAGGACCTGTAAACTTCATGGTTCGGCTTTTTGT
GGTATTGTGATGTTTGCCTGGTCTATAGTTGCCTCCACAGCTCTCCTTGCTGATAGCCAGCCTCCAAAC
CGCAGAGCCCTAGCTGTTTATCCTGTTTTCTGTTTTACTTTGTCATCAGTTGGATGATTCTCACCTTA
TCCTCAG

ACGCGTACGCGGCCGCTCGAGCAGAAACTCATCTCAGAAGAGGATCTGGCAGCAAATGATATCCTGGATT
ACAAGGATGACGACGATAAGGTTTAA



[View online »](#)

Protein Sequence: >RC204519 protein sequence
Red=Cloning site Green=Tags(s)

MAEAEESPGDPGTASPRPLFAGLSDISISQDIPVEGEITIPMRSRIREFDSSTLINESVRNTIMRDLKAVG
 KKFMHVLYPRKSNLLRDWDLWGPLICVTLALMLQRDSADSEKGGPQFAEVFVIVWFGAVTITLNSKL
 LGGNISFFQSLCVLGYCILPLTVAMLICRLVLLADPGPVNFMVRLFVVIIVMFAWSIVASTALLADSQPPN
 RRALAVYPVFLFYFVISWMILTFTPQ

TRTRPLEQKLISEEDLAANDILDYKDDDDKV

Chromatograms: https://cdn.origene.com/chromatograms/mk6311_f05.zip

Restriction Sites: SgfI-MluI

Cloning Scheme:

Cloning sites used for ORF Shuttling:



* The last codon before the Stop codon of the ORF

ACCN: NM_173834

ORF Size: 708 bp

OTI Disclaimer: The molecular sequence of this clone aligns with the gene accession number as a point of reference only. However, individual transcript sequences of the same gene can differ through naturally occurring variations (e.g. polymorphisms), each with its own valid existence. This clone is substantially in agreement with the reference, but a complete review of all prevailing variants is recommended prior to use. [More info](#)

OTI Annotation: This clone was engineered to express the complete ORF with an expression tag. Expression varies depending on the nature of the gene.

Components: The ORF clone is ion-exchange column purified and shipped in a 2D barcoded Matrix tube containing 10ug of transfection-ready, dried plasmid DNA (reconstitute with 100 ul of water).

Reconstitution Method:

1. Centrifuge at 5,000xg for 5min.
2. Carefully open the tube and add 100ul of sterile water to dissolve the DNA.
3. Close the tube and incubate for 10 minutes at room temperature.
4. Briefly vortex the tube and then do a quick spin (less than 5000xg) to concentrate the liquid at the bottom.
5. Store the suspended plasmid at -20°C. The DNA is stable for at least one year from date of shipping when stored at -20°C.

RefSeq: [NM_173834.2](#), [NP_776195.1](#)

RefSeq Size: 6282 bp

RefSeq ORF: 711 bp

Locus ID: 286451

UniProt ID: [Q96EC8](#)

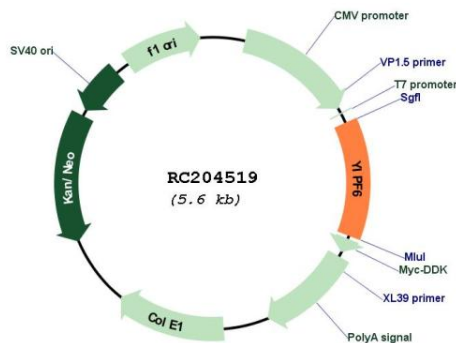
Cytogenetics: Xq12-q13.1

Protein Families: Transmembrane

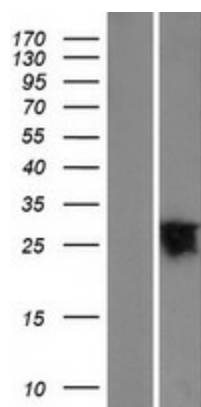
MW: 26.2 kDa

Gene Summary: May be required for stable YIPF1 and YIPF2 protein expression.[UniProtKB/Swiss-Prot Function]

Product images:



Circular map for RC204519



Western blot validation of overexpression lysate (Cat# [LY406439]) using anti-DDK antibody (Cat# [TA50011-100]). Left: Cell lysates from untransfected HEK293T cells; Right: Cell lysates from HEK293T cells transfected with RC204519 using transfection reagent MegaTran 2.0 (Cat# [TT210002]).