

Product datasheet for **RC204516**

CHURC 1 (CHURC1) (NM_145165) Human Tagged ORF Clone

Product data:

Product Type:	Expression Plasmids
Product Name:	CHURC 1 (CHURC1) (NM_145165) Human Tagged ORF Clone
Tag:	Myc-DDK
Symbol:	CHURC 1
Synonyms:	C14orf52; chch; My015
Mammalian Cell Selection:	Neomycin
Vector:	pCMV6-Entry (PS100001)
E. coli Selection:	Kanamycin (25 ug/mL)
ORF Nucleotide Sequence:	<p>>RC204516 ORF sequence</p> <p>Red=Cloning site Blue=ORF Green=Tags(s)</p> <p>TTTGTAAATACGACTCACTATAGGGCGGCCGGAATTCGTCGACTGGATCCGGTACCGAGGAGATCTGCCGCCCGCATCGC</p> <p>ATGTGTGGCGACTGTGTGGAGAAGGAATATCCCAACCGGGTAATACCTGCCTGGAGAATGGATCTTTCTACTGAACTTTACAGGCTGTGCAGTGTGCAGTAAGCGGGATTTTATGCTGATCACAAACAAATCCTTGAAAGAAGAAGATGGAGAAGAAATAGTTACCTATGATCATTTGTGTAAGAATTGTCATCATGTAATAGCCAGACATGAGTATACATTCAGTATCATGGATGAATTTAGGAGTATACCATGCTGTGTCTGTTATGCGGCAAGCCGAAGATACTATCAGTATTCTCCTGATGACCCCGACAAATGACTCTCTTATTC</p> <p>ACGCGTACGCGGCCGCTCGAGCAGAACTCATCTCAGAAGAGGATCTGGCAGCAAATGATATCCTGGATTACAAGGATGACGACGATAAGGTTTAA</p>
Protein Sequence:	<p>>RC204516 protein sequence</p> <p>Red=Cloning site Green=Tags(s)</p> <p>MCGDCVEKEYPNRGNTCLENGSFLLNFTGCAVCSKRDFMLITNKSLEEDGEEIVTYDHLCKNCHHVIARHEYTFSIMDEFQEYTMCLLLCGKAEDTISILPDDPRQMTLLF</p> <p>TRTRPLEQKLISEEDLANDILDYKDDDDKV</p>
Chromatograms:	https://cdn.origene.com/chromatograms/mk6305_c03.zip
Restriction Sites:	SgfI-MluI


[View online »](#)

Cloning Scheme:


ACCN: NM_145165

ORF Size: 336 bp

OTI Disclaimer: The molecular sequence of this clone aligns with the gene accession number as a point of reference only. However, individual transcript sequences of the same gene can differ through naturally occurring variations (e.g. polymorphisms), each with its own valid existence. This clone is substantially in agreement with the reference, but a complete review of all prevailing variants is recommended prior to use. [More info](#)

OTI Annotation: This clone was engineered to express the complete ORF with an expression tag. Expression varies depending on the nature of the gene.

Components: The ORF clone is ion-exchange column purified and shipped in a 2D barcoded Matrix tube containing 10ug of transfection-ready, dried plasmid DNA (reconstitute with 100 ul of water).

Reconstitution Method:

1. Centrifuge at 5,000xg for 5min.
2. Carefully open the tube and add 100ul of sterile water to dissolve the DNA.
3. Close the tube and incubate for 10 minutes at room temperature.
4. Briefly vortex the tube and then do a quick spin (less than 5000xg) to concentrate the liquid at the bottom.
5. Store the suspended plasmid at -20°C. The DNA is stable for at least one year from date of shipping when stored at -20°C.

Note: Plasmids are not sterile. For experiments where strict sterility is required, filtration with 0.22um filter is required.

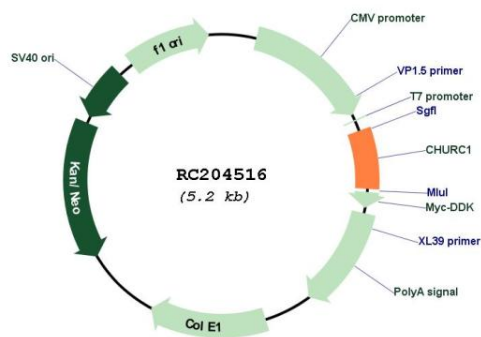
RefSeq: [NM_145165.1](#)

RefSeq Size: 3635 bp

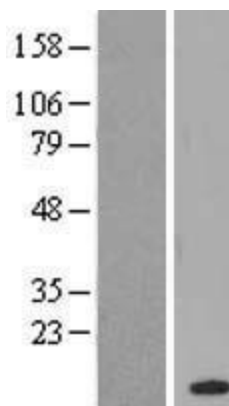
RefSeq ORF: 423 bp

Locus ID:	91612
UniProt ID:	Q8WUH1
Cytogenetics:	14q23.3
Protein Families:	Transcription Factors
MW:	12.9 kDa
Gene Summary:	Transcriptional activator that mediates FGF signaling during neural development. Plays a role in the regulation of cell movement (By similarity). Does not bind DNA by itself. [UniProtKB/Swiss-Prot Function]

Product images:



Circular map for RC204516



Western blot validation of overexpression lysate (Cat# [LY408027]) using anti-DDK antibody (Cat# [TA50011-100]). Left: Cell lysates from untransfected HEK293T cells; Right: Cell lysates from HEK293T cells transfected with RC204516 using transfection reagent MegaTran 2.0 (Cat# [TT210002]).