

Product datasheet for RC204513

NMUR2 (NM_020167) Human Tagged ORF Clone

Product data:

Product Type:	Expression Plasmids
Product Name:	NMUR2 (NM_020167) Human Tagged ORF Clone
Tag:	Myc-DDK
Symbol:	NMUR2
Synonyms:	FM-4; FM4; NMU-R2; NMU2R; TGR-1; TGR1
Mammalian Cell Selection:	Neomycin
Vector:	pCMV6-Entry (PS100001)
E. coli Selection:	Kanamycin (25 ug/mL)
ORF Nucleotide Sequence:	>RC204513 ORF sequence Red=Cloning site Blue=ORF Green=Tags(s)

TTTTGTAATACGACTCACTATAGGGCGGCCGGAATTCGTCGACTGGATCCGGTACCGAGGAGATCTGCC
GCC**CGATCGCC**

ATGTCAGGGATGGAAAACTTCAGAATGCTTCCTGGATCTACCAGCAGAACTAGAAGATCCATTCCAGA
AACACCTGAACAGCACCAGGAGTATCTGGCTTCCTCTGCGGACCTCGGCGCAGCCACTTCTCTCCC
CGTGTCTGTGGTGTATGTCCAATTTTTGTGGTGGGGTCATTGGCAATGTCTGGTGTGCCTGGTATT
CTGCAGCACCAGGCTATGAAGACGCCACCAACTACTACCTCTTCAGCCTGGCGGTCTCTGACCTCTGG
TCCTGCTCCTTGAATGCCCTGGAGGTCTATGAGATGTGGCGCAACTACCTTTCTTGTTCGGGCCGT
GGGCTGCTACTTCAAGACGGCCCTTTTGGAGACCGTGTGCTTCGCTCCATCCTCAGCATACCACCGTC
AGCGTGGAGCGCTACGTGGCCATCCTACACCCGTTCCGCGCCAAACTGCAGAGCACCAGCGCCGGGCC
TCAGGATCCTCGGCATCGTCTGGGGCTTCTCCGTGCTCTTCTCCCTGCCAACACCAGCATCCATGGCAT
CAAGTTCCTACTTCCCAATGGGTCCCTGGTCCCAGGTTCCGGCCACCTTTACGGTCACTAAGCCCATG
TGGATCTACAATTTATCATCCAGGTCACCTCCTTCTATTCTACCTCCTCCCATGACTGTCATCAGTG
TCCTCTACTACCTCATGGCACTCAGACTAAAGAAAGACAAATCTTTGAGGCAGATGAAGGAATGCAA
TATTCAAAGACCCCTGCAGAAAATCAGTCAACAAGATGCTGTTTGTCTTGGTCTTAGTGTTGCTATCTGT
TGGGCCCGTCCACATTGACCGACTTCTTTCAGCTTTGTGGAGGAGTGGAGTGAATCCCTGGCTGTG
TGTTCAACCTCGCCATGTGGTGTGAGGTGCTTCTTCTACCTGAGCTCAGCTGTCAACCCATTATCTA
TAACCTACTGTCTCGCCGCTTCCAGGCAGCATTCCAGAATGTGATCTTCTTTCCACAAACAGTGGCAC
TCCCAGCATGACCACAGTTGCCACCTGCCAGCGGAACATCTTCTGACAGAATGCCACTTTGTGGAGC
TGACCGAAGATATAGGTCCCAATTCCCATGTCAGTCAATCCATGCACAACCTCACCTCCCAACAGCCCT
CTCTAGTGAACAGATGTCAAGAACAACATCAAAGCTTCCACTTTAACAAAACC

ACGGTACGCGGCCGCTCGAGCAGAACTCATCTCAGAAGAGGATCTGGCAGCAATGATATCCTGGATT
ACAAGGATGACGACGATAAGGTTTAA



[View online >](#)

Protein Sequence: >RC204513 protein sequence
Red=Cloning site Green=Tags(s)

MSGMEKLNASWIYQQKLEDPFQKHLNSTEEYLAFLCGPRRSHFFLPVSVVYVPIFVVGIVIGNVLVCLVI
 LQHQAMKTPNTNYLFLAVSDLLVLLGMPLEVYEMWRNYPFLFGPVGCYFKTALFETVCFASILSITTV
 SVERYVAILHPFRAKLQSTRRRALRILGIVWGFVLFSLPNTSIHGKIFHYFPNGSLVPGSATFTVIKPM
 WIYNFIIQVTSFLFYLLPMTVISVLYLMLRLKDKSLEADEGNANIQRPCRKSVNKMFLVFLVFAIC
 WAPFHIDRLFFSFVEEWESLAAVFNLVHVVSQVFFYLSAVNPIIYNLLSRRFQAAFQNVISSFHKQWH
 SQHDPQLPPAQRNIFLTECHFVELTEDIGPQFPCQSSMHNSHLPTALSSEQMSRTNYQSFHFNK

TRTRPLEQKLISEEDLAANDILDYKDDDDKV

Chromatograms: https://cdn.origene.com/chromatograms/mk6130_b12.zip

Restriction Sites: SgfI-MluI

Cloning Scheme:



ACCN: NM_020167

ORF Size: 1245 bp

OTI Disclaimer: The molecular sequence of this clone aligns with the gene accession number as a point of reference only. However, individual transcript sequences of the same gene can differ through naturally occurring variations (e.g. polymorphisms), each with its own valid existence. This clone is substantially in agreement with the reference, but a complete review of all prevailing variants is recommended prior to use. [More info](#)

OTI Annotation: This clone was engineered to express the complete ORF with an expression tag. Expression varies depending on the nature of the gene.

Components: The ORF clone is ion-exchange column purified and shipped in a 2D barcoded Matrix tube containing 10ug of transfection-ready, dried plasmid DNA (reconstitute with 100 ul of water).

Reconstitution Method:

1. Centrifuge at 5,000xg for 5min.
2. Carefully open the tube and add 100ul of sterile water to dissolve the DNA.
3. Close the tube and incubate for 10 minutes at room temperature.
4. Briefly vortex the tube and then do a quick spin (less than 5000xg) to concentrate the liquid at the bottom.
5. Store the suspended plasmid at -20°C. The DNA is stable for at least one year from date of shipping when stored at -20°C.

RefSeq: [NM_020167.3](#), [NP_064552.2](#)

RefSeq Size: 2067 bp

RefSeq ORF: 1248 bp

Locus ID: 56923

UniProt ID: [Q9GZQ4](#)

Cytogenetics: 5q33.1

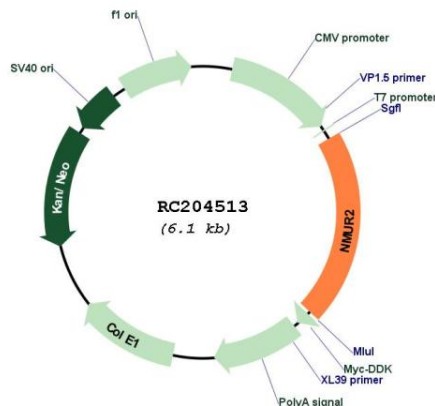
Protein Families: Druggable Genome, GPCR, Transmembrane

Protein Pathways: Neuroactive ligand-receptor interaction

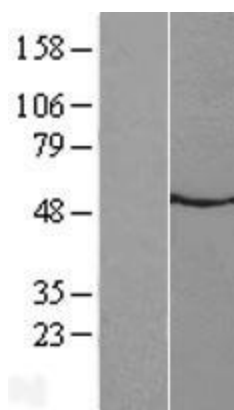
MW: 47.8 kDa

Gene Summary: This gene encodes a protein from the G-protein coupled receptor 1 family. This protein is a receptor for neuromedin U, which is a neuropeptide that is widely distributed in the gut and central nervous system. This receptor plays an important role in the regulation of food intake and body weight. [provided by RefSeq, Jul 2008]

Product images:



Circular map for RC204513



Western blot validation of overexpression lysate (Cat# [LY402759]) using anti-DDK antibody (Cat# [TA50011-100]). Left: Cell lysates from untransfected HEK293T cells; Right: Cell lysates from HEK293T cells transfected with RC204513 using transfection reagent MegaTran 2.0 (Cat# [TT210002]).