

Product datasheet for RC204512

SPINK6 (NM_205841) Human Tagged ORF Clone

Product data:

Product Type: Expression Plasmids
Product Name: SPINK6 (NM_205841) Human Tagged ORF Clone
Tag: Myc-DDK
Symbol: SPINK6
Synonyms: BUSI2; UNQ844
Mammalian Cell Selection: Neomycin
Vector: pCMV6-Entry (PS100001)
E. coli Selection: Kanamycin (25 ug/mL)
ORF Nucleotide Sequence: >RC204512 ORF sequence
Red=Cloning site Blue=ORF Green=Tags(s)

TTTTGTAATACGACTCACTATAGGGCGGCCGGAATTCGTCGACTGGATCCGGTACCGAGGAGATCTGCC
GCC**CGATCGCC**

ATGAAACTGTCAGGCATGTTTCTGCTCCTCTCTGGCTCTTTCTGCTTTTAAACAGGTGTCTTCAGTC
AGGGAGGACAGGTTGACTGTGGTGAGTTCCAGGACACCAAGGTCTACTGCACTCGGGAATCTAACCCACA
CTGTGGCTCTGATGGCCAGACATATGGCAATAAATGTGCCTTCTGTAAGGCCATAGTAAAAAGTGGTGA
AAGATTAGCCTAAAGCATCCTGAAAATGC

ACGCGTACGCGGCCGCTCGAGCAGAAACTCATCTCAGAAGAGGATCTGGCAGCAAATGATATCCTGGATT
ACAAGGATGACGACGATAAGGTTTAA

Protein Sequence: >RC204512 protein sequence
Red=Cloning site Green=Tags(s)
MKLSGMFLLL~~SLAL~~FCFLTG~~VFS~~QGGQVDCGEFQDTKVYCTRESNP~~HCG~~SDGQTYGNKCAFCKAIVKSGG
KISLKH~~PGKC~~

TRTRPLEQKLISEEDLAANDILDYKDDDDKV

Chromatograms: https://cdn.origene.com/chromatograms/mk6326_e06.zip

Restriction Sites: Sgfl-MluI



[View online »](#)

Cloning Scheme:


ACCN: NM_205841

ORF Size: 240 bp

OTI Disclaimer: The molecular sequence of this clone aligns with the gene accession number as a point of reference only. However, individual transcript sequences of the same gene can differ through naturally occurring variations (e.g. polymorphisms), each with its own valid existence. This clone is substantially in agreement with the reference, but a complete review of all prevailing variants is recommended prior to use. [More info](#)

OTI Annotation: This clone was engineered to express the complete ORF with an expression tag. Expression varies depending on the nature of the gene.

Components: The ORF clone is ion-exchange column purified and shipped in a 2D barcoded Matrix tube containing 10ug of transfection-ready, dried plasmid DNA (reconstitute with 100 ul of water).

Reconstitution Method:

1. Centrifuge at 5,000xg for 5min.
2. Carefully open the tube and add 100ul of sterile water to dissolve the DNA.
3. Close the tube and incubate for 10 minutes at room temperature.
4. Briefly vortex the tube and then do a quick spin (less than 5000xg) to concentrate the liquid at the bottom.
5. Store the suspended plasmid at -20°C. The DNA is stable for at least one year from date of shipping when stored at -20°C.

RefSeq: [NM_205841.1](#)

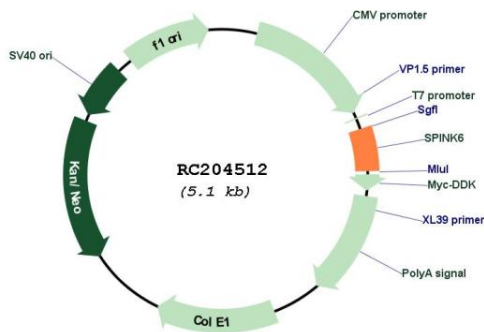
RefSeq Size: 737 bp

RefSeq ORF: 243 bp

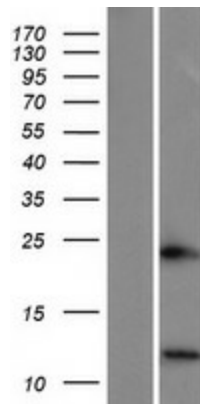
Locus ID: 404203

UniProt ID: [Q6UWN8](#)
Cytogenetics: 5q32
Protein Families: Secreted Protein, Transmembrane
MW: 8.6 kDa
Gene Summary: The protein encoded by this gene is a Kazal-type serine protease inhibitor that acts on kallikrein-related peptidases in the skin. Two transcript variants the same protein have been found for this gene. [provided by RefSeq, Aug 2010]

Product images:



Circular map for RC204512



Western blot validation of overexpression lysate (Cat# [LY404267]) using anti-DDK antibody (Cat# [TA50011-100]). Left: Cell lysates from untransfected HEK293T cells; Right: Cell lysates from HEK293T cells transfected with RC204512 using transfection reagent MegaTran 2.0 (Cat# [TT210002]).