

Product datasheet for RC204507L1

OMA1 (NM_145243) Human Tagged Lenti ORF Clone

Product data:

Product Type:	Expression Plasmids
Product Name:	OMA1 (NM_145243) Human Tagged Lenti ORF Clone
Tag:	Myc-DDK
Symbol:	OMA1
Synonyms:	2010001O09Rik; DAB1; MPRP-1; MPRP1; peptidase; YKR087C; ZMPOMA1
Mammalian Cell Selection:	None
Vector:	pLenti-C-Myc-DDK (PS100064)
E. coli Selection:	Chloramphenicol (34 ug/mL)
ORF Nucleotide Sequence:	The ORF insert of this clone is exactly the same as(RC204507).
Restriction Sites:	SgfI-MluI
Cloning Scheme:	

Cloning sites used for ORF Shuttling:



* The last codon before the Stop codon of the ORF.

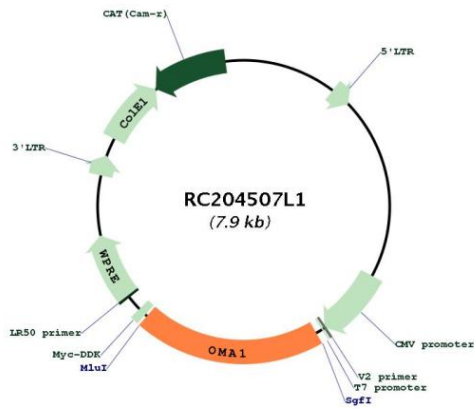
ACCN:	NM_145243
ORF Size:	1572 bp



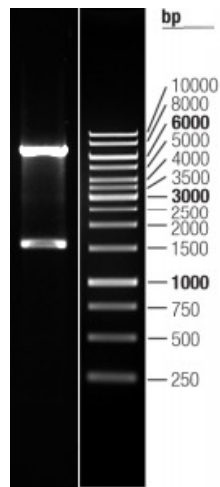
[View online >](#)

OTI Disclaimer:	The molecular sequence of this clone aligns with the gene accession number as a point of reference only. However, individual transcript sequences of the same gene can differ through naturally occurring variations (e.g. polymorphisms), each with its own valid existence. This clone is substantially in agreement with the reference, but a complete review of all prevailing variants is recommended prior to use. More info
OTI Annotation:	This clone was engineered to express the complete ORF with an expression tag. Expression varies depending on the nature of the gene.
Components:	The ORF clone is ion-exchange column purified and shipped in a 2D barcoded Matrix tube containing 10ug of transfection-ready, dried plasmid DNA (reconstitute with 100 ul of water).
Reconstitution Method:	<ol style="list-style-type: none"> 1. Centrifuge at 5,000xg for 5min. 2. Carefully open the tube and add 100ul of sterile water to dissolve the DNA. 3. Close the tube and incubate for 10 minutes at room temperature. 4. Briefly vortex the tube and then do a quick spin (less than 5000xg) to concentrate the liquid at the bottom. 5. Store the suspended plasmid at -20°C. The DNA is stable for at least one year from date of shipping when stored at -20°C.
RefSeq:	NM_145243.3
RefSeq Size:	1928 bp
RefSeq ORF:	1575 bp
Locus ID:	115209
UniProt ID:	Q96E52
Cytogenetics:	1p32.2-p32.1
Protein Families:	Druggable Genome, Protease, Transmembrane
MW:	60.1 kDa
Gene Summary:	<p>Metalloprotease that is part of the quality control system in the inner membrane of mitochondria. Following stress conditions that induce loss of mitochondrial membrane potential, mediates cleavage of OPA1 at S1 position, leading to OPA1 inactivation and negative regulation of mitochondrial fusion. May also cleave UQCC3 under these conditions. Its role in mitochondrial quality control is essential for regulating lipid metabolism as well as to maintain body temperature and energy expenditure under cold-stress conditions.</p> <p>[UniProtKB/Swiss-Prot Function]</p>

Product images:



Circular map for RC204507L1



Double digestion of RC204507L1 using SgfI and MluI