

Product datasheet for **RC204501**

FAM210B (NM_080821) Human Tagged ORF Clone

Product data:

Product Type: Expression Plasmids
Product Name: FAM210B (NM_080821) Human Tagged ORF Clone
Tag: Myc-DDK
Symbol: FAM210B
Synonyms: 5A3; C20orf108; dj1167H4.1
Mammalian Cell Selection: Neomycin
Vector: pCMV6-Entry (PS100001)
E. coli Selection: Kanamycin (25 ug/mL)
ORF Nucleotide Sequence: >RC204501 representing NM_080821
 Red=Cloning site Blue=ORF Green=Tags(s)

TTTTGTAATACGACTCACTATAGGGCGGCCGGAATTCGTCGACTGGATCCGGTACCGAGGAGATCTGCC
 GCC**CGATCGCC**

ATGGCCGGGTTGCTGGCGTTGCTGGGTCCGGCAGGCAGGGTGGGCGCCGGGTCCGGCCTCGCGCCACCT
 GGCTCCTGGGCGCCACCGCCCCGCGCCCCGCGCCCCGCGCCCTGGCCCTGGCCCTGCTCCCGCCAGGCTAGA
 CGCCCGGTGCTCCGCACGGCGCGGGGACTGCCGCGCCACCAGGACCCAGCCAGGCCACGGGGACA
 ACAGGCAGCAGCGTCAGCTGCACAGAGGAGAAAAAGCAAAGCAAGTCACAGCAACTGAAAAAGATTTTTTC
 AAGAGTATGGCACTGTTGGCGTGCATTGCACATTGGAATCTCATTAAATTCCTTGGGCATATTTTACAT
 GGTGTGTCAAGTGGTGTGGACATGCCTGCAATCCTGCTGAAACTCGGATTTAAAGAGTCCCTGGTACAG
 TCAAAAATGGCAGCAGGCACAAGTACCTTCGTGGTGGCCTATGCAATCCACAAGCTGTTTGTGCCAGTGA
 GAATCAGCATTACGCTAGTCTCTGTGCCCTTATTGTCAGATATTTTCGAAAAGTGGGATTTTTTAAACC
 TCCAGCTGCAAAACCT

ACGCGTACGCGGCCGCTCGAGCAGAACTCATCTCAGAAGAGGATCTGGCAGCAATGATATCCTGGATT
 ACAAGGATGACGACGATAAGGTTTAA

Protein Sequence: >RC204501 representing NM_080821
 Red=Cloning site Green=Tags(s)

MAGLLALLGPAGRVGARVRPRATWLLGATAPCAPPLALALLPPRLDARLLRTARGDCRQHQPDSQATGT
 TGSSVSCTEEKKQSKSQQLKKIFQEYGTGVSLHIGISLISLGIFYMVVSSGVDMPAILLKLGFKESLVQ
 SKMAAGTSTFVVAYAIHKLFPVVRISITLVSVPLIVRYFRKVGFFKPPAAKP

TRTRPLEQKLISEEDLAANDILDYKDDDDKV



[View online »](#)

Chromatograms: https://cdn.origene.com/chromatograms/ja1449_c02.zip

Restriction Sites: SgfI-MluI

Cloning Scheme:



ACCN: NM_080821

ORF Size: 576 bp

OTI Disclaimer: Due to the inherent nature of this plasmid, standard methods to replicate additional amounts of DNA in *E. coli* are highly likely to result in mutations and/or rearrangements. Therefore, OriGene does not guarantee the capability to replicate this plasmid DNA. Additional amounts of DNA can be purchased from OriGene with batch-specific, full-sequence verification at a reduced cost. Please contact our customer care team at custsupport@origene.com or by calling 301.340.3188 option 3 for pricing and delivery.

The molecular sequence of this clone aligns with the gene accession number as a point of reference only. However, individual transcript sequences of the same gene can differ through naturally occurring variations (e.g. polymorphisms), each with its own valid existence. This clone is substantially in agreement with the reference, but a complete review of all prevailing variants is recommended prior to use. [More info](#)

OTI Annotation: This clone was engineered to express the complete ORF with an expression tag. Expression varies depending on the nature of the gene.

Components: The ORF clone is ion-exchange column purified and shipped in a 2D barcoded Matrix tube containing 10ug of transfection-ready, dried plasmid DNA (reconstitute with 100 ul of water).

Reconstitution Method:

1. Centrifuge at 5,000xg for 5min.
2. Carefully open the tube and add 100ul of sterile water to dissolve the DNA.
3. Close the tube and incubate for 10 minutes at room temperature.
4. Briefly vortex the tube and then do a quick spin (less than 5000xg) to concentrate the liquid at the bottom.
5. Store the suspended plasmid at -20°C. The DNA is stable for at least one year from date of shipping when stored at -20°C.

RefSeq: [NM_080821.3](#)

RefSeq Size: 3026 bp

RefSeq ORF: 579 bp

Locus ID: 116151

UniProt ID: [Q96KR6](#)

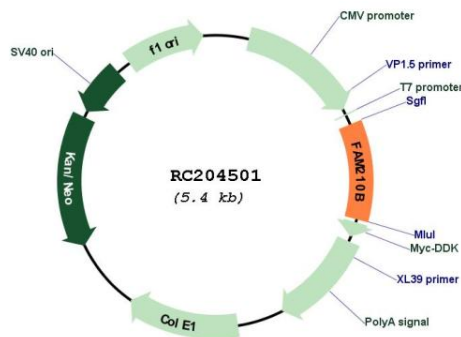
Cytogenetics: 20q13.2

Protein Families: Transmembrane

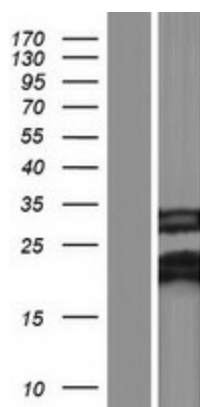
MW: 20.2 kDa

Gene Summary: Plays a role in erythroid differentiation (PubMed:26968549). Involved in cell proliferation and tumor cell growth suppression (PubMed:28594398). Involved in the metabolic reprogramming of cancer cells in a PDK4-dependent manner (PubMed:28594398).[UniProtKB/Swiss-Prot Function]

Product images:



Circular map for RC204501



Western blot validation of overexpression lysate (Cat# [LY409025]) using anti-DDK antibody (Cat# [TA50011-100]). Left: Cell lysates from untransfected HEK293T cells; Right: Cell lysates from HEK293T cells transfected with RC204501 using transfection reagent MegaTran 2.0 (Cat# [TT210002]).