

## Product datasheet for **RC204498L4V**

### **BCL2 (NM\_000633) Human Tagged ORF Clone Lentiviral Particle**

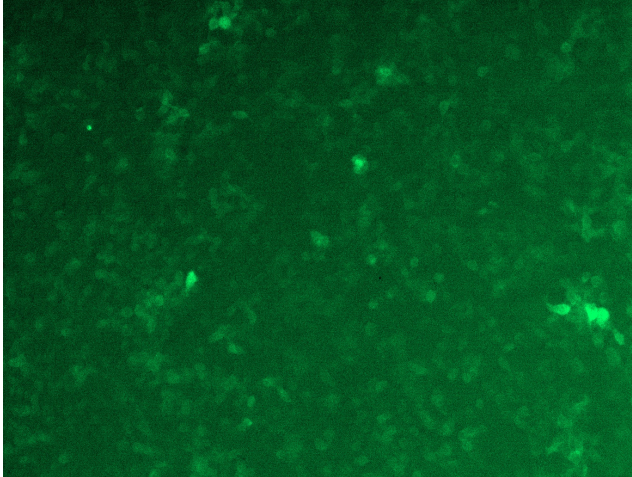
#### **Product data:**

Product Type:	Lentiviral Particles
Product Name:	BCL2 (NM_000633) Human Tagged ORF Clone Lentiviral Particle
Symbol:	BCL2
Synonyms:	Bcl-2; PPP1R50
Mammalian Cell Selection:	Puromycin
Vector:	pLenti-C-mGFP-P2A-Puro (PS100093)
Tag:	mGFP
ACCN:	NM_000633
ORF Size:	717 bp
ORF Nucleotide Sequence:	The ORF insert of this clone is exactly the same as(RC204498).
OTI Disclaimer:	The molecular sequence of this clone aligns with the gene accession number as a point of reference only. However, individual transcript sequences of the same gene can differ through naturally occurring variations (e.g. polymorphisms), each with its own valid existence. This clone is substantially in agreement with the reference, but a complete review of all prevailing variants is recommended prior to use. <a href="#">More info</a>
OTI Annotation:	This clone was engineered to express the complete ORF with an expression tag. Expression varies depending on the nature of the gene.
RefSeq:	<a href="#">NM_000633.2</a>
RefSeq Size:	6492 bp
RefSeq ORF:	720 bp
Locus ID:	596
UniProt ID:	<a href="#">P10415</a>
Cytogenetics:	18q21.33
Protein Families:	Druggable Genome, ES Cell Differentiation/IPS, Stem cell - Pluripotency, Transmembrane

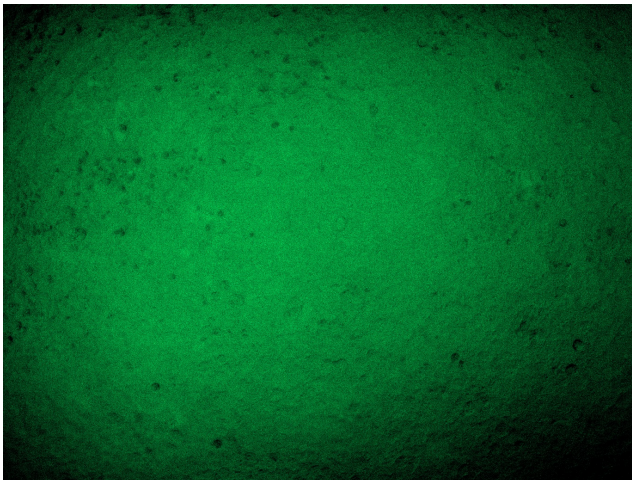


[View online »](#)

<b>Protein Pathways:</b>	Amyotrophic lateral sclerosis (ALS), Apoptosis, Colorectal cancer, Focal adhesion, Neurotrophin signaling pathway, Pathways in cancer, Prostate cancer, Small cell lung cancer
<b>MW:</b>	26.1 kDa
<b>Gene Summary:</b>	This gene encodes an integral outer mitochondrial membrane protein that blocks the apoptotic death of some cells such as lymphocytes. Constitutive expression of BCL2, such as in the case of translocation of BCL2 to Ig heavy chain locus, is thought to be the cause of follicular lymphoma. Alternative splicing results in multiple transcript variants. [provided by RefSeq, Feb 2016]

**Product images:**

[RC204498L4] was used to prepare Lentiviral particles using [TR30037] packaging kit. HEK293T cells were transduced with RC204498L4V particle to overexpress human BCL2-mGFP fusion protein.



[RC204498L4] was used to prepare Lentiviral particles using [TR30037] packaging kit. HEK293T cells were transduced with RC204498L4V particle to overexpress human BCL2-mGFP fusion protein.