

## Product datasheet for **RC204496**

### CD32B (FCGR2B) (NM\_001002275) Human Tagged ORF Clone

#### Product data:

Product Type:	Expression Plasmids
Product Name:	CD32B (FCGR2B) (NM_001002275) Human Tagged ORF Clone
Tag:	Myc-DDK
Symbol:	CD32B
Synonyms:	CD32; CD32B; FCG2; FCGR2; FCGR2C; FcRII-c; IGFR2
Mammalian Cell Selection:	Neomycin
Vector:	pCMV6-Entry (PS100001)
E. coli Selection:	Kanamycin (25 ug/mL)
ORF Nucleotide Sequence:	>RC204496 representing NM_001002275 Red=Cloning site Blue=ORF Green=Tags(s)

TTTTGTAATACGACTCACTATAGGGCGCCGGGAATTCGTCGACTGGATCCGGTACCGAGGAGATCTGCC  
GCC**CGATCGCC**

ATGGGAATCCTGTCACTTACCTGTCTTCCACTGAGAGTGACTGGGCTGACTGCAAGTCCCCCAGC  
CTTGGGGTCATATGCTTCTGTGGACAGCTGTGCTATTCTGGCTCCTGTTGCTGGGACACCTGCAGCTCC  
CCCAAAGGCTGTGCTGAACTCGAGCCCCAGTGGATCAACGTGCTCCAGGAGGACTCTGTGACTCTGACA  
TGCCGGGGGACTCACAGCCCTGAGAGCGACTCCATTCAAGTGGTCCACAATGGGAATCTCATTCCCACCC  
ACACGCAGCCCAGCTACAGGTTCAAGGCCAACAAACAATGACAGCGGGGAGTACACGTGCCAGACTGGCCA  
GACCAGCCTCAGCGACCTGTGCATCTGACTGTGCTTTCTGAGTGGCTGGTGTCCAGACCCCTCACCCG  
GAGTTCAGGAGGGAGAAACCATCGTGCTGAGGTGCCACAGCTGGAAGGACAAGCCTCTGGTCAAGGTCA  
CATTCTCCAGAAATGAAAATCCAAGAAATTTTCCCGTTCGGATCCCAACTTCTCCATCCCAAGCAAA  
CCACAGTCACAGTGGTGATTACCACTGCACAGGAAACATAGGCTACACGCTGACTCATCCAAGCCTGTG  
ACCATCACTGTCCAAGCTCCAGCTCTTACCGATGGGGATCATTGTGGCTGTGGTCACTGGGATTGCTG  
TAGCGCCATTGTTGCTGCTGTAGTGGCCTTGATCTACTGCAGGAAAAAGCGGATTTCACTCTCCCAGG  
ATACCTGAGTGCAGGAAATGGGAGAGACCCTCCCTGAGAAACCAGCCAATCCCCTAATCCTGATGAG  
GCTGACAAAGTTGGGGCTGAGAACACAATCACCTATTCATCTCATGCACCCGGATGCTCTGGAAGAGC  
CTGATGACCAGAACCCTATT

**ACGCGT**ACGCGGCCGCTCGAGCAGAAACTCATCTCAGAAGAGGATCTGGCAGCAAATGATATCCTGGATT  
ACAAGGATGACGACGATAAGGTTTAA



[View online »](#)

**Protein Sequence:** >RC204496 representing NM\_001002275  
Red=Cloning site Green=Tags(s)

MGILSFLPVLATESDWADCKSPQPWGHMLLWTAVLFLAPVAGTPAAPPKAVLKLEPQWINVLQEDSVTLT  
 CRGTHSPESDSIQWFHNGNLIPHTHTQPSYRFKANNNDSGEYTCQTGTSLSDPVHLTVLSEWLVLQTPHP  
 EFQEGETIVLRCHSWKDKPLVKVTFVFQNGKSKKFSRSDPNFSIPQANHSHSGDYHCTGNIGYTLYSSKPV  
 TITVQAPSSSPMGIIVAVVTGIIVAAVAIVAAVALIYCRKKRISALPGYPECREMGETLPEK PANPTNPDE  
 ADKVGAENTITYSLLMHPDALEEPDDQNRI

TRTRPLEQKLISEEDLAANDILDYKDDDDKV

**Chromatograms:** [https://cdn.origene.com/chromatograms/mg2536\\_f07.zip](https://cdn.origene.com/chromatograms/mg2536_f07.zip)

**Restriction Sites:** SgfI-MluI

**Cloning Scheme:**



**ACCN:** NM\_001002275

**ORF Size:** 930 bp

**OTI Disclaimer:** The molecular sequence of this clone aligns with the gene accession number as a point of reference only. However, individual transcript sequences of the same gene can differ through naturally occurring variations (e.g. polymorphisms), each with its own valid existence. This clone is substantially in agreement with the reference, but a complete review of all prevailing variants is recommended prior to use. [More info](#)

**OTI Annotation:** This clone was engineered to express the complete ORF with an expression tag. Expression varies depending on the nature of the gene.

**Components:** The ORF clone is ion-exchange column purified and shipped in a 2D barcoded Matrix tube containing 10ug of transfection-ready, dried plasmid DNA (reconstitute with 100 ul of water).

**Reconstitution Method:**

1. Centrifuge at 5,000xg for 5min.
2. Carefully open the tube and add 100ul of sterile water to dissolve the DNA.
3. Close the tube and incubate for 10 minutes at room temperature.
4. Briefly vortex the tube and then do a quick spin (less than 5000xg) to concentrate the liquid at the bottom.
5. Store the suspended plasmid at -20°C. The DNA is stable for at least one year from date of shipping when stored at -20°C.

**RefSeq:** [NM\\_001002275.2](#)

**RefSeq Size:** 1630 bp

**RefSeq ORF:** 930 bp

**Locus ID:** 2213

**UniProt ID:** [P31994](#)

**Cytogenetics:** 1q23.3

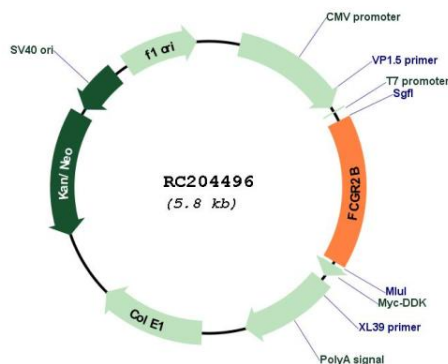
**Protein Families:** ES Cell Differentiation/IPS, Transmembrane

**Protein Pathways:** B cell receptor signaling pathway, Fc gamma R-mediated phagocytosis, Systemic lupus erythematosus

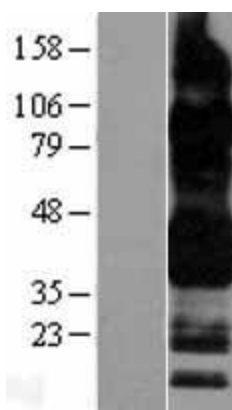
**MW:** 33.8 kDa

**Gene Summary:** The protein encoded by this gene is a low affinity receptor for the Fc region of immunoglobulin gamma complexes. The encoded protein is involved in the phagocytosis of immune complexes and in the regulation of antibody production by B-cells. Variations in this gene may increase susceptibility to systemic lupus erythematosus (SLE). Several transcript variants encoding different isoforms have been found for this gene. [provided by RefSeq, Jun 2010]

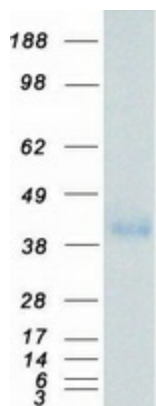
### Product images:



Circular map for RC204496



Western blot validation of overexpression lysate (Cat# [LY400365]) using anti-DDK antibody (Cat# [TA50011-100]). Left: Cell lysates from untransfected HEK293T cells; Right: Cell lysates from HEK293T cells transfected with RC204496 using transfection reagent MegaTran 2.0 (Cat# [TT210002]).



Coomassie blue staining of purified FCGR2B protein (Cat# [TP304496]). The protein was produced from HEK293T cells transfected with FCGR2B cDNA clone (Cat# RC204496) using MegaTran 2.0 (Cat# [TT210002]).