

Product datasheet for **RC204487**

SLC1A4 (NM_003038) Human Tagged ORF Clone

Product data:

Product Type:	Expression Plasmids
Product Name:	SLC1A4 (NM_003038) Human Tagged ORF Clone
Tag:	Myc-DDK
Symbol:	SLC1A4
Synonyms:	ASCT1; SATT; SPATCCM
Mammalian Cell Selection:	Neomycin
Vector:	pCMV6-Entry (PS100001)
E. coli Selection:	Kanamycin (25 ug/mL)



[View online »](#)

ORF Nucleotide Sequence:

>RC204487 ORF sequence
 Red=Cloning site Blue=ORF Green=Tags(s)

TTTTGTAATACGACTCACTATAGGGCGGCCGGAATTCGTCGACTGGATCCGGTACCGAGGAGATCTGCC
 GCC**CGATCGCC**

ATGGAGAAGACAAACGAGACCAACGGCTACCTTGACAGCGCTCAGCGGGGCTCGCGCCGGCCCGGAG
 CTCGGGGACCGCGGCGGACGCGCACGGCGTTGCGCGGGCTTCCTGCGCGCCAAGCGCTGGTGCCTGCT
 CACCGTGTCCGGGTGCTGGCGGCGCGGGCTGGGCGCGGCGTTGCGCGGGCTCAGCCTGAGCCGCACG
 CAGGTCACCTACCTGGCCTTCCCGGCGAGATGCTGCTCCGCATGCTGCGCATGATCATCTGCCCTGG
 TGGTCTGCAGCCTGGTGTGGGCGCCGCTCCCTCGATGCCAGCTGCCTCGGGCGTCTGGGCGGCATCGC
 TGTGCGCTACTTTGGCCTCACCACACTGAGTGCCTCGGCGCTCGCCGTGGCCTTGGCGTTTATCATCAAG
 CCAGGATCCGGTGCAGACCCCTCAGTCCAGCGACCTGGGGCTGGAGGACTCGGGGCTCCTCCTGTCC
 CCAAAGAGACGGTGGACTCTTCTCGACTGGCCAGAACTGTTCCCTCCAATCTTGTGGTTGCAGC
 TTTCCGTACGTATGCAACCGATTATAAAGTCGTGACCCAGAACAGCAGCTCTGGAATGTAAACCCATGAA
 AAGATCCCATAGGCACTGAGATAGAAGGGATGAACATTTTAGGATTGGTCTGTTTGTCTGGTGTAG
 GAGTGGCCTTAAAGAACTAGGCTCCGAAGGAGAAGACCTCATCCGTTTCTTCAATTCCTCAACGAGGC
 GACGATGGTGTGGTGTCTGGATTATGTGGTACGTACCTGTGGGCATCATGTTCCCTGTTGGAAGCAAG
 ATCGTGGAAATGAAAGACATCATCGTGTGGTACCAGCCTGGGAAATACATCTTCGCATCTATATTGG
 GCCATGTTATTTCATGGAGGAATTGTTCTGCCACTATTTATTTTGTTTTTCACACGAAAAACCCATTAG
 ATCTCCTGGGCTCCTCGCCCATTTGCGACAGCATTGCTACCTGCTCCAGCTCAGCGACCCCTCC
 TCTATGATGAAGTGCATTGAAGAGAACAATGGTGTGGACAAGAGGATCAGCAGGTTTATTCTCCCATCG
 GGGCCACCGTGAACATGGACGGAGCAGCCATCTCCAGTGTGTGGCCGCGGTGTTCAATGCGCAACTCAA
 CAACGTAGAGCTCAACGCAGGACAGATTTTACCATTCTAGTACTGCCACAGCGTCCAGTGTGGAGCA
 GCAGGCGTGCCAGCTGGAGGGTCTCACCATTGCCATTATCCTGGAGGCCATTGGGCTGCCTACTCATG
 ACCTGCCTCTGATCCTGGCTGTGGACTGGATTGTGGACCGGACCACCACGGTGGTGAATGTGGAAGGGGA
 TGCCCTGGGTGCAGGCATTCTCCACCACCTGAATCAGAAGGCAACAAAGAAAGGCGAGCAGGAATTGCT
 GAGGTGAAAGTGAAGCCATCCCAACTGCAAGTCTGAGGAGGAGACATCGCCCTGGTGACACACCAGA
 ACCCCGCTGGCCCGTGGCCAGTCCCCAGAATGGAATCCAAGGAGTCGGTTCTG

ACGCGTACGCGGCCGCTCGAGCAGAACTCATCTCAGAAGAGGATCTGGCAGCAAATGATATCCTGGATT
 ACAAGGATGACGACGATAAGGTTTAA

Protein Sequence:

>RC204487 protein sequence
 Red=Cloning site Green=Tags(s)

MEKSNETNGYLSAQAGPAAGPGAPGTAAGRARRCAGFLRRQALVLLTVSGVLGAGLGAALRGLSLSRT
 QVTYLAFPGEMLLRMLRMIILPLVVCSLVSGAASLDASCLGRLGGIAYAVYFGLTTLASALAVAFIHK
 PGSGAQLTQSSDLGLEDSGPPVPKETVDSFLDLARNLFPSNLVVAARFRTYATDYKVVVTQNSSSGNVTHE
 KIPIGTEIEGMNLLGLVLFALVLGVALKKLGSEGEDLIRFFNSLNEATMVLVSWIMWYVPVIMFLVGSK
 IIVEMKDIIIVLVTSLGKYIFASILGHVIHGGIVLPLIYFVFRKNPFRLLGLLAPFATAFATCSSSATLP
 SMMKCIENNGVDKRISRFILPIGATVNMDGAAIFQVAAVFIAQLNNVELNAGQIFITILVTATASSVGA
 AGVPAGGVLTI AILEAIGLPHDLPLILAVDWIVDRTTVVNVEGDALGAGILHHLNQAATKKGEQELA
 EVKVEAIPNCKSEEETSPLVTHQNPAGPVASAPELESKESVL

TRTRPLEQKLISEEDLAANDILDYKDDDDKV

Chromatograms:

https://cdn.origene.com/chromatograms/mk6271_e08.zip

Restriction Sites:

SgfI-MluI

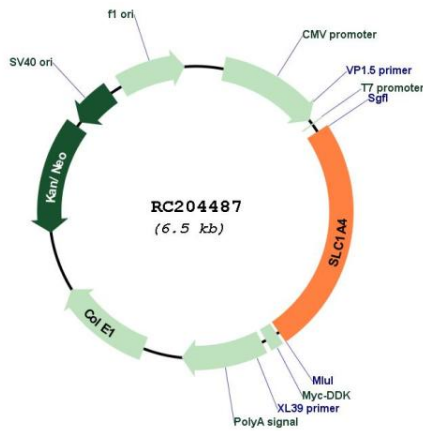
Domains: SDF

Protein Families: Druggable Genome, Transmembrane

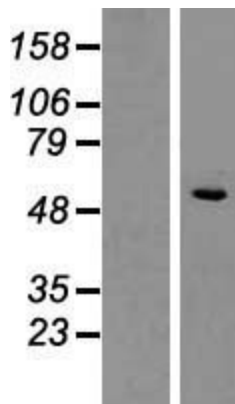
MW: 55.7 kDa

Gene Summary: The protein encoded by this gene is a sodium-dependent neutral amino acid transporter for alanine, serine, cysteine, and threonine. Defects in this gene have been associated with developmental delay, microcephaly, and intellectual disability. [provided by RefSeq, Jan 2017]

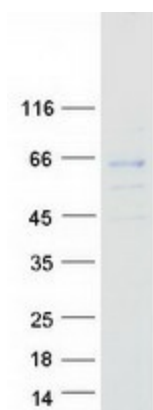
Product images:



Circular map for RC204487



Western blot validation of overexpression lysate (Cat# [LY418935]) using anti-DDK antibody (Cat# [TA50011-100]). Left: Cell lysates from untransfected HEK293T cells; Right: Cell lysates from HEK293T cells transfected with RC204487 using transfection reagent MegaTran 2.0 (Cat# [TT210002]).



Coomassie blue staining of purified SLC1A4 protein (Cat# [TP304487]). The protein was produced from HEK293T cells transfected with SLC1A4 cDNA clone (Cat# RC204487) using MegaTran 2.0 (Cat# [TT210002]).