

Product datasheet for **RC204484**

Corneodesmosin (CDSN) (NM_001264) Human Tagged ORF Clone

Product data:

Product Type:	Expression Plasmids
Product Name:	Corneodesmosin (CDSN) (NM_001264) Human Tagged ORF Clone
Tag:	Myc-DDK
Symbol:	Corneodesmosin
Synonyms:	HTSS; HTSS1; HYPT2; PSS; PSS1; S
Mammalian Cell Selection:	Neomycin
Vector:	pCMV6-Entry (PS100001)
E. coli Selection:	Kanamycin (25 ug/mL)



[View online »](#)

ORF Nucleotide Sequence:

>RC204484 ORF sequence
 Red=Cloning site Blue=ORF Green=Tags(s)

TTTTGTAATACGACTCACTATAGGGCGGCCGGGAATTCGTCGACTGGATCCGGTACCGAGGAGATCTGCC
 GCC**CGGATCGCC**

ATGGGCTCGTCTCGGGCACCTGGATGGGGCGTGTGGGTGGGCACGGGATGTTGGCACTGCTGCTGGCTG
 GTCTCCTCCTGCCAGGGACCTTGGCTAAGAGCATTGGCACCTTCTCAGACCCCTGTAAGGACCCACGCG
 TATCACCTCCCCTAACGACCCCTGCCTCACTGGGAAGGGTACTCCAGCGGCTTCACTAGCTACAGTGGC
 TCCAGCAGTTCTGGCAGCTCCATTTCCAGTGCCAGAAGCTCTGGTGGTGGCTCCAGTGGTAGCTCCAGCG
 GATCCAGCATTGCCAGGGTGGTCTGCAGGATCTTTAAGCCAGGAACGGGGTATTCCCAGGTCAGCTA
 CTCCTCCGGATCTGGCTTAGTCTACAAGGTGCATCCGGTTCCTCCAGCTGGGAGCAGCAGCTCTCAC
 TCGGAAGCAGCGGCTCTACTCGGGCAGCAGCTCTATTGAGCAGCAGCAGCAGCTTTCAGTTCAGCA
 GCAGCAGCTTCCAAGTAGGGAATGGCTCTGCTCTGCCAACCAATGACAACTTTACCGCGGAATACTAAA
 CCCTTCCAGCCTGGACAAAGCTTCTCTTCCAGACCTTTGGGGTATCCAGCAGTGGCCAAAGCGTC
 AGCTCAAACAGCGTCCCTGTAGTTCGGACATCCCGACTCTCCCTGCAGTGGAGGGCCATCGTCTCGC
 ACTCCGGCCCCTACATCCCCAGCTCCCACTCTGTGTCCAGGGGTGAGAGGCTGTGGTGGTGGTGGTGG
 CCAGCAGGTTCTGGTGGCCCTGGAGTGGTTCAAGGTCCCCCTGTAGCAATGGTGGCCTTCCAGGCAAG
 CCCTGTCCCCCAATCACCTCTGTAGACAAATCCTATGGTGGTACGAGGTGGTGGTGGTGGTGGTGGTGG
 GTTATCTGGTCCAGGCATGACCTACAGTAAGGGTAAATCTACCCTGTGGGCTACTTACCAAAGAGAA
 CCCTGTGAAAGGCTCTCCAGGGTCCCTTCCTTTCAGCTGGGCCCCCATCTCTGAGGGCAAATACTTC
 TCCAGAACCCCATCATCCCAGCCAGTCGCAGCTTCTCGGCCATTGCATTCCAGCCAGTGGGACTG
 GTGGGGTCCAGCTCTGTGGAGGGCGCTCCACGGGCTCCAAGGGACCCTGCTCTCCCTCCAGTCTCGAGT
 CCCAGCAGTTCTAGCATTTCGGCAGCTCCGGTTTACCCTACCATCCCTGCGGCAGTGGTTCAGAGC
 CCCTGCTCCCCACCAGGCACCGCTCCTTCAGCAGCAGCTCCAGTTCCTCAATCCAGTGGCAAATATCC
 TTCAGCCTTGGCGCAGCAAGTCCAGCTTCTCTGGTCAACCTTGCATGTCTGTCTCCTCCTTGACACTGAC
 TGGGGGCCCGATGGCTCTCCCATCCTGATCCCTCCGCTGGTGGCAAGCCCTGTGGTCCAGCAGTGTCT
 GGAAAGATCCCCTGCCGCTCCATCCGGGATATCTAGCCAAAGTGAAGCCTCTGGGGCCCCAGCTAGCTG
 ACCCTGAAGTTTTCTACCCAAGGAGAGTTACTCGACAGTCCA

AG**CGGACCG**ACGCGTACGCGGCCGCTCGAGCAGAACTCATCTCAGAAGAGGATCTGGCAGCAAATGATATCC
 TGGATTACAAGGATGACGACGATAAGGTTTAA

Protein Sequence:

>RC204484 protein sequence
 Red=Cloning site Green=Tags(s)

MGSSRAPWMGRVGGHMLALLLAGLLLPGTLAKSIGTFSDPKDPTRITSPNDPCLTGKGDSSGFSYSSG
 SSSSGSSISSARSSGGSSGSSSSGSSIAQGGAGSFKPGTGYVSYSSGSSSLQGASGSSQLGSSSSH
 SGSSGSHSGSSSSSSSSSFQFSSSSFQVGNLSALPTNDNSYRGILNPSQPGQSSSSSQTFGVSSSGQSV
 SSNQRPCSSDIPDSPCSGGPIVSHSGPYIPSSHSVSGGQRPVVVVVDQHGSGAPGVVQGPSPNGGLPGK
 PCPPITSDKSYGGYEVVGGSSDYLVPGMTYSKGIYPVGYFTKENPVKSPGVPSFAAGPPISEGKYF
 SSNPIIPSQSAASSAIAFPVGTGGVQLCGGGSTGSKGPCSPSSSRVPSSSSISGSSGLPYHPCGSASQS
 PCSPPGTGSFSSSSSSQSSGKIILQPCGSKSSSSGHPCMSVSSLTLTGGPDGSPHPDPSAGAKPCGSSSA
 GKIPCRSIRDILAQVKPLGPQLADPEVFLPQGEILLDSP

SGPTRTRPLEQKLISEEDLAANDILDYKDDDDKV

Chromatograms:

https://cdn.origene.com/chromatograms/mk6619_d11.zip

Restriction Sites:

Sgfl-RsrII

Cloning Scheme:



ACCN: NM_001264

ORF Size: 285 bp

OTI Disclaimer: The molecular sequence of this clone aligns with the gene accession number as a point of reference only. However, individual transcript sequences of the same gene can differ through naturally occurring variations (e.g. polymorphisms), each with its own valid existence. This clone is substantially in agreement with the reference, but a complete review of all prevailing variants is recommended prior to use. [More info](#)

OTI Annotation: This clone was engineered to express the complete ORF with an expression tag. Expression varies depending on the nature of the gene.

Components: The ORF clone is ion-exchange column purified and shipped in a 2D barcoded Matrix tube containing 10ug of transfection-ready, dried plasmid DNA (reconstitute with 100 ul of water).

Reconstitution Method:

1. Centrifuge at 5,000xg for 5min.
2. Carefully open the tube and add 100ul of sterile water to dissolve the DNA.
3. Close the tube and incubate for 10 minutes at room temperature.
4. Briefly vortex the tube and then do a quick spin (less than 5000xg) to concentrate the liquid at the bottom.
5. Store the suspended plasmid at -20°C. The DNA is stable for at least one year from date of shipping when stored at -20°C.

RefSeq Size: 2583 bp

RefSeq ORF: 1590 bp

Locus ID: 1041

UniProt ID: [Q15517](#)

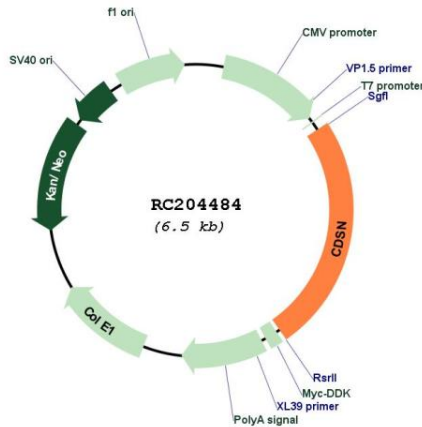
Cytogenetics: 6p21.33

Protein Families: Secreted Protein, Transmembrane

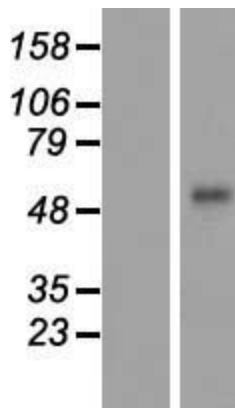
MW: 51.4 kDa

Gene Summary: This gene encodes a protein found in corneodesmosomes, which localize to human epidermis and other cornified squamous epithelia. The encoded protein undergoes a series of cleavages during corneocyte maturation. This gene is highly polymorphic in human populations, and variation has been associated with skin diseases such as psoriasis, hypotrichosis and peeling skin syndrome. The gene is located in the major histocompatibility complex (MHC) class I region on chromosome 6. [provided by RefSeq, Dec 2014]

Product images:



Circular map for RC204484



Western blot validation of overexpression lysate (Cat# [LY420043]) using anti-DDK antibody (Cat# [TA50011-100]). Left: Cell lysates from untransfected HEK293T cells; Right: Cell lysates from HEK293T cells transfected with RC204484 using transfection reagent MegaTran 2.0 (Cat# [TT210002]).