

Product datasheet for **RC204471**

TPP1 (NM_000391) Human Tagged ORF Clone

Product data:

Product Type:	Expression Plasmids
Product Name:	TPP1 (NM_000391) Human Tagged ORF Clone
Tag:	Myc-DDK
Symbol:	TPP1
Synonyms:	CLN2; GIG1; LPIC; SCAR7; TPP-1
Mammalian Cell Selection:	Neomycin
Vector:	pCMV6-Entry (PS100001)
E. coli Selection:	Kanamycin (25 ug/mL)



[View online »](#)

ORF Nucleotide Sequence:

>RC204471 ORF sequence
 Red=Cloning site Blue=ORF Green=Tags(s)

TTTTGTAATACGACTCACTATAGGGCGGCCGGAATTCGTCGACTGGATCCGGTACCGAGGAGATCTGCC
 GCC**CGGATCGCC**

ATGGGACTCCAAGCCTGCCTCCTAGGGCTCTTTGCCCTCATCCTCTCTGGCAAATGCAGTTACAGCCCGG
 AGCCCGACCAGCGGAGGACGCTGCCCCAGGCTGGGTGTCCCTGGGCCGTGCGGACCCTGAGGAAGAGCT
 GAGTCTCACCTTTGCCCTGAGACAGCAGAATGTGAAAGACTCTCGGAGCTGGTGCAGGCTGTGTGGAT
 CCCAGCTCTCCTCAATACGAAAAATACCTGACCCTAGAGAATGTGGCTGATCTGGTGAGGCCATCCCCAC
 TGACCCTCCACACGGTGCAAAAATGGCTCTTGGCAGCCGAGCCAGAAGTGCCATTCTGTGATCACACA
 GGACTTTCTGACTTGCTGGCTGAGCATCCGACAAGCAGAGCTGCTGCTCCCTGGGGCTGAGTTTCATCAC
 TATGTGGGAGGACCTACGAAACCCATGTTGTAAGGTCCCACATCCCTACCAGCTTCCACAGGCCCTTGG
 CCCCCATGTGGACTTTGTGGGGGACTGCACCGTTTTCCCCAAACATCATCCCTGAGGCCAACGCTCTGA
 GCCGCAGGTGACAGGGACTGTAGGCCTGCATCTGGGGTAAACCCCTCTGTGATCCGTAAGCGATAACA
 TTGACCTCACAAGACGTGGGCTCTGGCACCAGCAATAACAGCCAAGCCTGTGCCAGTTCCTGGAGCAGT
 ATTTCCATGACTCAGACCTGGCTCAGTTCATGCGCCTCTTCGGTGGCAACTTTCACATCAGGCATCAGT
 AGCCCGTGTGGTGGACAACAGGGCCGGGGCCGGGCGGGATTGAGGCCAGTCTAGATGTGCAGTACCTG
 ATGAGTGTGGTGCACATCTCCACCTGGGTCTACAGTAGCCCTGGCCGGCATGAGGGACAGGAGCCCT
 TCCTGCAGTGGCTCATGCTGCTCAGTAATGAGTCAGCCCTGCCACATGTGCATACTGTGAGCTATGGAGA
 TGATGAGGACTCCCTCAGCAGCGCTACATCCAGCGGTCAACTGAGCTCATGAAGGCTGCCGCTCGG
 GGTCTCACCTGCTCTTCGCCTCAGGTGACAGTGGGGCCGGGTGTTGGTGTCTCTGGAAGACACGAGT
 TCCGCCCTACCTCCCTGCCTCCAGCCCTATGTCACCACAGTGGGAGGCACATCTCCAGGAACCTTT
 CCTCATCACAATGAAATGTTGACTATATCAGTGGTGGTTCAGCAATGTGTTCCACGCGCCTTCA
 TACCAGGAGGAAGCTGTAAAGTTCCTGAGCTCTAGCCCCACCTGCCACCATCCAGTTACTTCAATG
 CCAGTGGCCGTGCCTACCCAGATGTGGTGCACCTTCTGATGGCTACTGGTGGTGGTGGTGGTGGTGGT
 CATTCCATGGGTGCCGAACTCGGCCTACTCCAGTGTGGGGGATCCTATCCTTGTCAATGAG
 CACAGGATCCTTAGTGGCCGCCCTCTTGGCTTCTCAACCAAGGCTCTACCAGCAGCATGGGGCAG
 GACTCTTTGATGTAACCCGTGGCTGCCATGAGTCTGTCTGGATGAAGAGGTAGAGGGCCAGGGTTCTG
 CTCTGGTCTGGTGGGATCCTGTAACAGGCTGGGAACACCAACTCCAGCTTGTCTGAAGACTCTA
 CTAACCCC

ACGCGTACGCGGCCGCTCGAGCAGAACTCATCTCAGAAGAGGATCTGGCAGCAAATGATATCCTGGATT
 ACAAGGATGACGACGATAAGGTTTAA

Protein Sequence:

>RC204471 protein sequence
 Red=Cloning site Green=Tags(s)

MGLQACLLGLFALILSGKCSYSPEPDQRRLLPPGWVSLGRADPEEELSLTFALRQQNVERLSELVQAVSD
 PSSPQYGYKYLLENVADLVRPSPLTLHTVQKWLAAAGAQQKCHSVITQDFLTCWLSIRQAELLLPGAEFHH
 YVGGPTEHVVRSPPHYQLPQALAPHVDFVGGHRFPPTSSLRQRPEPQVTVGLHLGVTPSVIRKRYN
 LTSQDVSGSTSNNSQACAQFLEQYFHSDLAQFMRLFNGFAHQASVARVVGQGRGRAGIEASLDVQYL
 MSAGANISTWVYSSPGRHEGQEPFLQWMLLSNESALPHVHTVSYGDDDSLSSAYIQRVNTLMKAAAR
 GLTLLFASGDSGAGCWSVSGRHEFRPTFPASSPYVTTVGGTTFQEPFLITNEIVDYISGGGF SNVFRPS
 YQEEAVTKFLSSPHLPPSSYFNASGRAYPDVAALSDGYWVSNRVPWPVSGTSASTPVFGGILSLINE
 HRILSGRPPLGFLNPRLYQHGAGLFDVTRGCHESCLDEEVEGQGFCSGPGWDPVTGWGTPNFPALLKTL
 LNP

TRTRPLEQKLISEEDLAANDILDYKDDDDKV

Chromatograms:

https://cdn.origene.com/chromatograms/mk6138_a11.zip

Restriction Sites:

Sgfl-Mlul

Cloning Scheme:


ACCN: NM_000391

ORF Size: 1689 bp

OTI Disclaimer: The molecular sequence of this clone aligns with the gene accession number as a point of reference only. However, individual transcript sequences of the same gene can differ through naturally occurring variations (e.g. polymorphisms), each with its own valid existence. This clone is substantially in agreement with the reference, but a complete review of all prevailing variants is recommended prior to use. [More info](#)

OTI Annotation: This clone was engineered to express the complete ORF with an expression tag. Expression varies depending on the nature of the gene.

Components: The ORF clone is ion-exchange column purified and shipped in a 2D barcoded Matrix tube containing 10ug of transfection-ready, dried plasmid DNA (reconstitute with 100 ul of water).

- Reconstitution Method:**
1. Centrifuge at 5,000xg for 5min.
 2. Carefully open the tube and add 100ul of sterile water to dissolve the DNA.
 3. Close the tube and incubate for 10 minutes at room temperature.
 4. Briefly vortex the tube and then do a quick spin (less than 5000xg) to concentrate the liquid at the bottom.
 5. Store the suspended plasmid at -20°C. The DNA is stable for at least one year from date of shipping when stored at -20°C.

RefSeq: [NM_000391.4](#)

RefSeq Size: 3540 bp

RefSeq ORF: 1692 bp

Locus ID: 1200

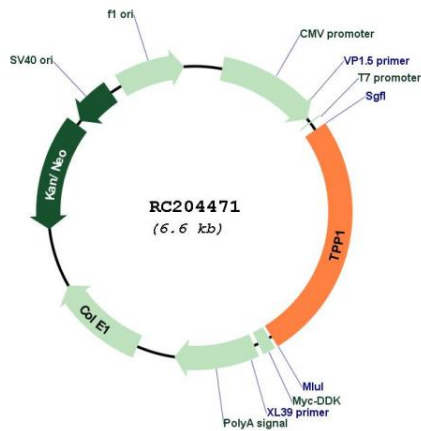
UniProt ID: [O14773](#)

Cytogenetics: 11p15.4

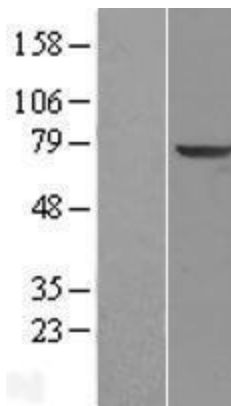
Protein Families: Protease
Protein Pathways: Lysosome
MW: 61.2 kDa

Gene Summary: This gene encodes a member of the sedolisin family of serine proteases. The protease functions in the lysosome to cleave N-terminal tripeptides from substrates, and has weaker endopeptidase activity. It is synthesized as a catalytically-inactive enzyme which is activated and auto-proteolyzed upon acidification. Mutations in this gene result in late-infantile neuronal ceroid lipofuscinosis, which is associated with the failure to degrade specific neuropeptides and a subunit of ATP synthase in the lysosome. [provided by RefSeq, Jul 2008]

Product images:



Circular map for RC204471



Western blot validation of overexpression lysate (Cat# [LY400137]) using anti-DDK antibody (Cat# [TA50011-100]). Left: Cell lysates from untransfected HEK293T cells; Right: Cell lysates from HEK293T cells transfected with RC204471 using transfection reagent MegaTran 2.0 (Cat# [TT210002]).